

Buck + Bloom
P A T T E R N S

Alpin Hat



@Buckandbloompatterns
#BBPATTERNS
#BBALPINHAT

buckandbloompatterns@gmail.com



Welcome

Thank you so much for supporting my small shop!
I am thrilled you are here, and I cannot wait to see
what we make together.

Small handmade shops and independant makers can sell products using this pattern . If you are selling products made using this pattern, you are responsible for following the regulations, safety, and compliance laws regarding the manufacturing of children's goods in your region. From one maker to another, we know social media makes our worlds go around. If you are using my patterns to sell handmade goods, please accredit the design to Buck & Bloom Patterns, and I will feature your shops on my social pages also!

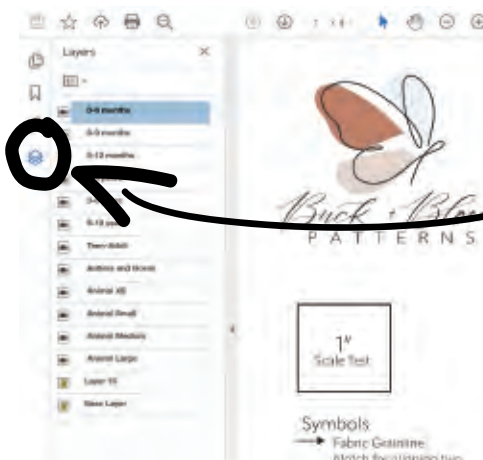
This Pattern may not be duplicated, distributed or resold.



LETS GET READY

Adobe Layers

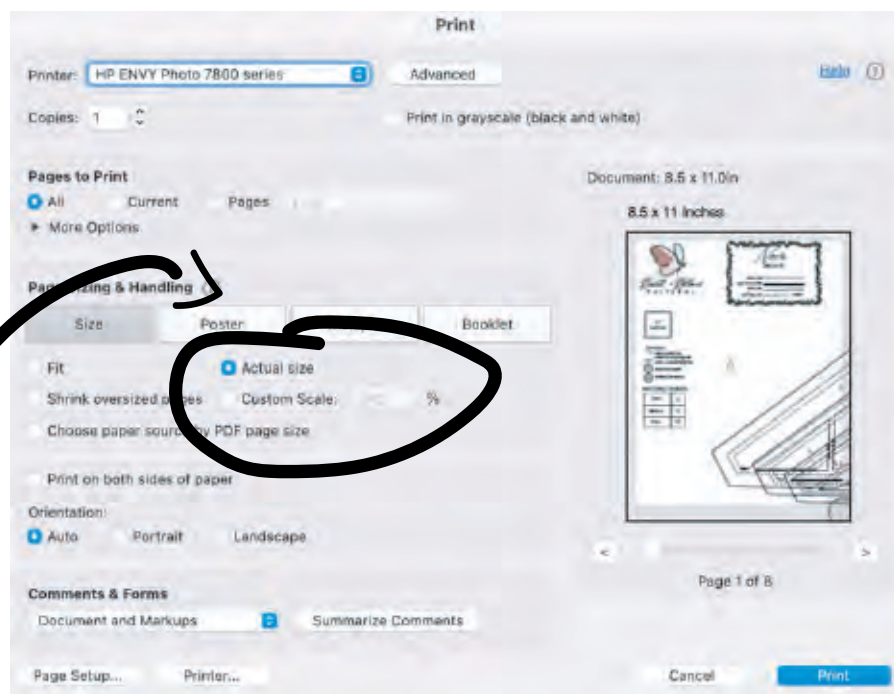
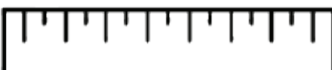
This PDF pattern uses *Layers* in Adobe Acrobat Reader. This allows you to print only the size you need.



You can locate layers on your left side bar menu.- Click the eye icons to display and hide sizes.

How to Print and Assemble

Ensure your printer is set to print in 'Actual Size', and start by printing only your first page with the "Scale Test" square. Measure your "Scale Test" square to ensure you are printing to scale. Once printed arrange by number, align the Stars in the corners using the grid lines as a guide, tape pages together, and cut out your pieces.



MATERIALS

Selecting Materials

This pattern is designed for winter weight fabrics, and works best with fleece, wool, flannel, minky, denim, laminated cotton, waxed canvas, sherpa, and quilted knits. The brim must be made from iron friendly fabric as it requires a good amount of pressing. Brim interfacing can either a heavy weight sew in, or fusible on one side or both. I personally prefer to use the double sided fusible interfacing, because it gives the smoothest finish. If you are planning on using a very thick lining fabric, consider sizing up if you are measuring close to the finished hat circumference.

Material Check List

- Exterior Fabric (1/2 meter)
- Lining Fabric (1/2 meter)
- Brim Fabric (fat quarter)
- Light to Mid Weight Fusible interfacing scraps (button stabilizing)
- Closures of your choice (Snaps, Velcro, Ties etc..)
- Thread
- Extra heavy fusible or sew in interfacing for brim (Pellon 70, Pellon 71F or Pellon 72F)
- 1/4 Elastic (lengths below)
- *Optional, a walking foot for thick fabrics

SIZE + ELASTIC CUT CHART		
AGE	FINISHED CIRCUMFERENCE	ELASTIC
0-3m	41.5cm	9 cm
3-6m	44.5cm	9.5 cm
6-12m	48cm	10 cm
1-3 Y	51.5cm	11 cm
3-6Y	53.4cm	12 cm
6-12Y	55cm	13 cm
Adult S	56.25cm	13.5 cm
Adult M	59cm	14.5 cm
Adult L	62.72cm	15 cm
Adult XL	66.5cm	15.5 cm

Style & Fit

Alpin is a customized fit hat through the use of the back elastic. Choose a size that is 1-2cm bigger than your head circumference, and 3cm bigger if using thick sherpa on the hat lining.

Sewing Tip!

When top stitching increase your stitch length to 3-3.5 for a smoother top stitch, and use a walking foot or hand crank through thicker fabrics.

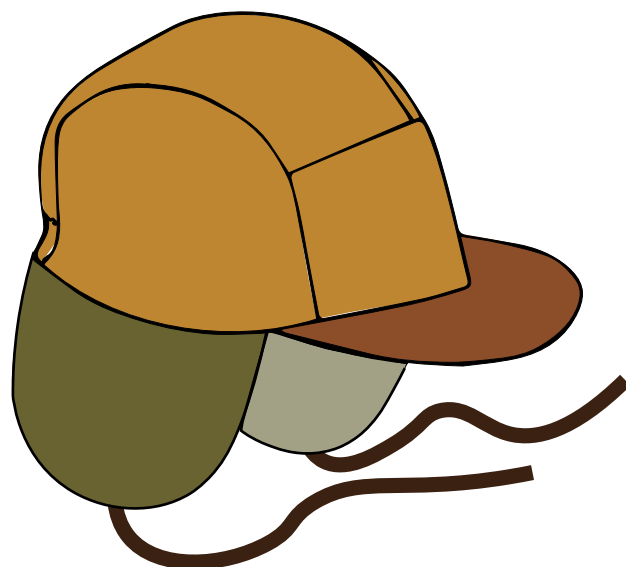
Seam Allowance

This pattern is made with a 1cm (3/8") seam allowance included into the pattern pieces. EXCEPT for the animal add ons that have their own seam allowance methods.

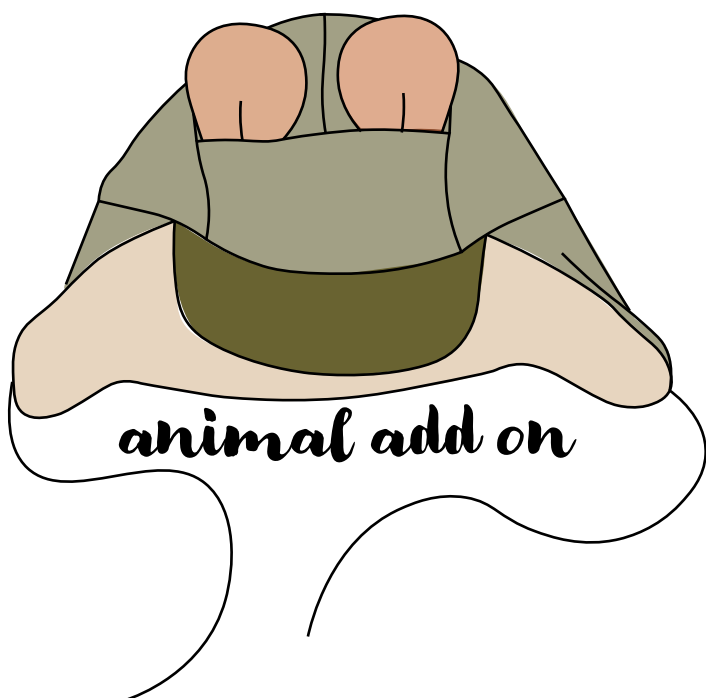
VIEWS



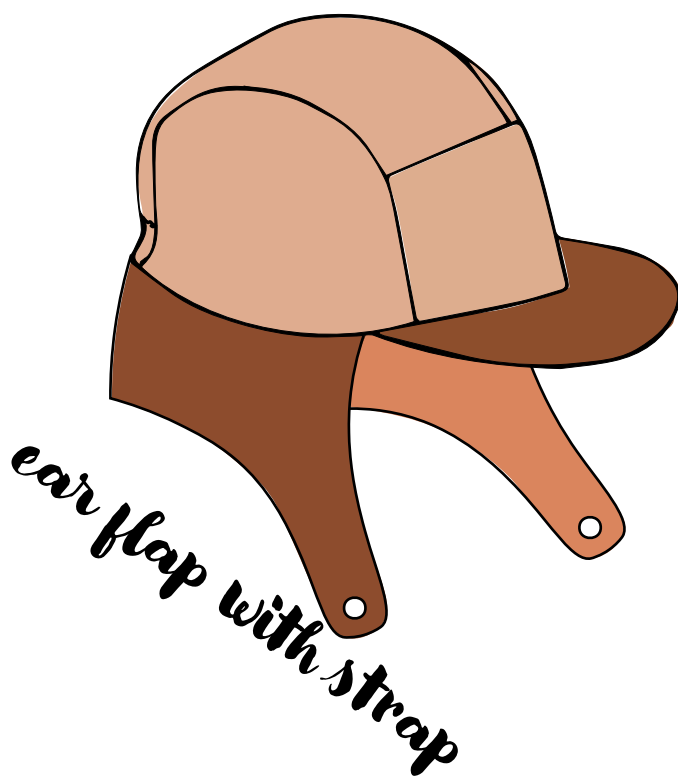
balaclava



ear flap with ties



animal add on



ear flap with strap

Alpin Hat Directions

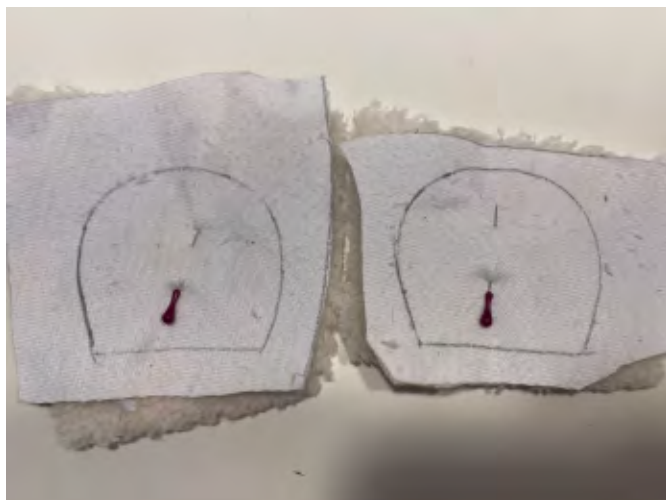
The seam allowance for the hat is 1cm (3/8"), and is included in the pattern pieces.
The Animal add ons have different seam allowances that are detailed in this tutorial.

1



Trace and cut out your pattern pieces according to the directions on your pattern pieces, and transfer all notch markings (if your pattern has any).

2



Sewing the animal add on. (all other versions skip to step #6)

Pin your fabric right sides together, and TRACE your animal ears/horn/antlers onto the wrong side of your fabric. *Tip, if your pattern piece calls for interfacing fuse it to your fabric now before sewing them together.

3



Sew directly on your tracing lines, but leave the flat bottom open for turning out.

*Tip, use a shorter stitch length between 1.5 and 2 for a smooth finish for the tight curves.

4



Cut your ears/horns/antlers out leaving a 1/4 seam allowance. Use pinking sheers or add snips on the curves and corners.

5



Turn right side out and press with your iron (If your fabric permits).

6

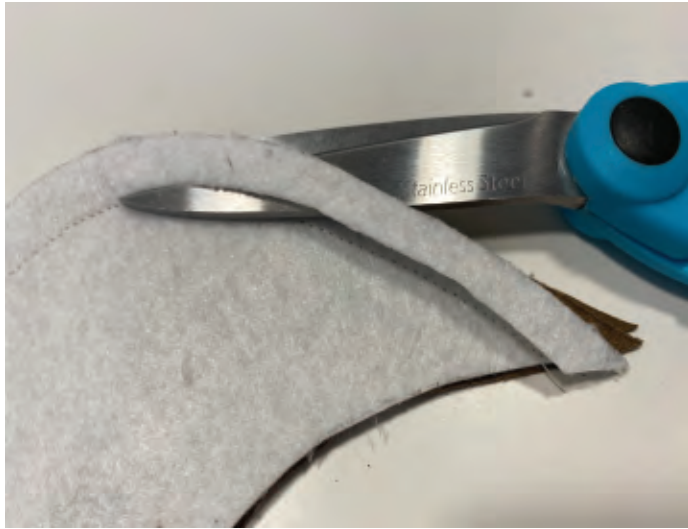


Sewing the Brim.

With your brim fabric right sides together lay your interfacing on top and sew all 3 layers together.

If your interfacing is fusible, wait to fuse it! for now just sew it in.

7



Trim your interfacing ONLY. Angle your scissors and cut as close to the stitches as possible without cutting any threads. This step is essential in ensuring your turned out seams are not bulky.

8



Once you are done trimming the interfacing your brim should look like this.

9



Trim your fabric seam allowance in half with pinking shears or add snips with scissors.

10



Turn your brim right side out through the opening and give it a press with your iron. take care to "roll" the seam between your fingers to make sure it is smooth and even before pressing.

*If your interfacing is fusible this is the time to fuse it to your brims by pressing extra hard and

11



Top stitch the outer brim edge 1cm in.

*optional, add as many rows of top stitching as you would like!

12



Sewing the Balaclava and Ear Flaps.

Strapless Ear Flap Only.

If you are adding DIY ties to the Strapless Ear Flap option, Cut 2 ties out of your desired fabric (bias, twill tape, knit yarn, ribbon ect..) at about 15" each. Finish the ends of your ties in your desired method

13



Baste your straps on to the centre of the Ear on your ear flap.

14



Place your fabrics right sides together, and sew. Leave the top edge open (the side that will attach to the hat top) for turning out. If you added straps they will be sandwiched between the two layers.

15



Trim the allowance in half with pinking shears, or add snips with scissors.

*Tip! If your fabric is extra fluffy, use the same trimming technique you used for your brim interfacing to reduce the seam bulk.

16



Turn your Ear flap, or Balaclava right side out through the top opening and give it a press with your iron.

*Tip, use a blunt chop stick or pencil to poke out the tight corners and curves.

After pressing your fabric, Edge stitch 1/4" in, leaving the top open.

17



Sewing the Hat top

Place your centre panel pieces right sides together and sew along the longer outer curve. Press your seam open and top stitch.

18



*Adding ears to the front panel.

If you are not adding ears skip to step #20

Fold the ears in half and sew 1cm in to create a small pleat in them. This will help them stand up better.

19



Place your ears onto the front panel right sides together 1.5cm from the outer edge of your front panel. Baste in place.

20



Place the top of your front panel right sides together with your centre panel and sew together.

*Animal add on

If you are adding ears complete steps #20 - # before sewing your front panel to your centre panel.

21



Press the seam open press the seam down towards the front panel and top stitch in place.

22



Pin your centre and front panel right sides together with your side panel, and sew together. Since this is a curved piece you need to ease it in. So not stretch as you pin. It will fit perfectly when eased in.

*Tip! When sewing together keep your centre panel on top to prevent it from stretching out while sewing.

23



Press your seam down towards the bottom of the hat, and top stitch in place.

Repeat steps #22-#23 for the other side panel.

24



Attaching the Brim

Align the centre of your brim with the centre of your exterior hat front panel piece.

*Tip! To find your centre fold your brim in half, and match your front panel seams.

25



Pin the rest of your brim to the hat top, easing the hat top in without stretching any fabric, and then hand baste the brim to the exterior hat. Hand basting is very important here to prevent your brim from slipping while machine sewing.

26

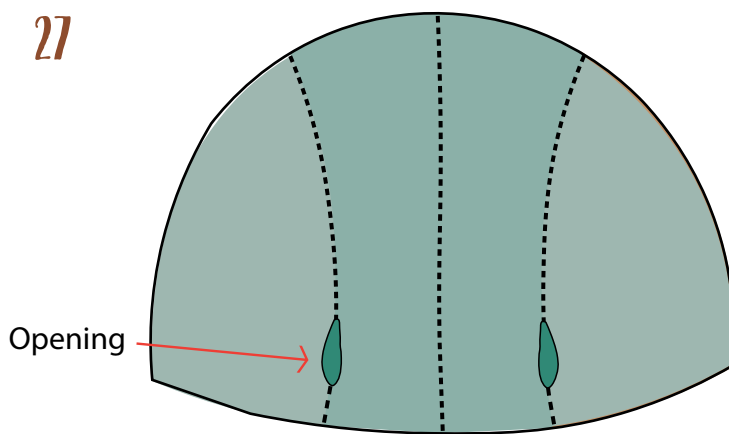


Attaching the Ear Flap or Balaclava

Align the centre of your Ear flap/-Balaclava with the centre seam on your centre panel on your exterior hat. Right sides together. Baste together with a 1/4" seam allowance.

*Tip. After pinning the centres together, pin the ends of your Ear Flap/Balaclava right up to the edge of the brim, and then ease the rest in. This will ensure your placement is correct and not uneven of the sides.

27



Back view of lining

Sewing your lining.

Repeat steps #17, #20, #22, but exclude the top stitching. Instead simply trim your seam allowance in half with pinking shears and press it open.

Follow the placement markers on your pattern pieces for your elastic casing gaps. These will make two small openings on the side panels.

28



Sewing the lining in.
Turn your exterior hat inside out and roll the Ear Flap/Balaclava up into the hat top, and flip the brim in to the hat top too.

With your lining inside out align the front and back, and pin along the raw edges. Your exterior and lining should be right sides together with all the brim, and ear flap/balaclava sandwiched between.

29



Sew your exterior to your lining carefully, and slowly to ensure the ear flap/balaclava and brim do not fall into the sewing lines. Leave a 3" gap at the back of the hat for turning out. *Tip, hand crank when sewing through the brim if the fabric is too thick for your sewing machine. Trim the seam allowance in half all the way around, except for the opening at the back.

30



Turn your hat right side out through the back opening.

31



Top stitch as close as possible along the bottom of the hat top where it meets the brim, and ear flap/balaclava. This will close the back opening.

32



Adding the Elastic casing.

Sew a straight line from one side of your centre panel to the other 3cm up from the bottom hat seam line.

33



Attach a safety pin or bodkin to one end of your elastic.

34



Thread the elastic through the casing channel.

35



Before the end of the elastic disappears into the casing, stitch it down in place. These stitches will be visible from the exterior, so ensure your bobbin thread colour is good for your exterior fabric.

36



Tuck the ends of the elastic into the opening and hand stitch the hole shut with a ladder stitch.

37



Balaclava option

Overlap the balaclava fronts by 2".

38



Place your fasteners in your desired locations, and you're done!

39



Ear Flap with strap option.

Place your fastener of choice on the ends of your straps and you're done!

40



Ear Flap without strap option completed.



@Buckandbloompatterns
#BBPATTERNS
#BBALPINHAT

buckandbloompatterns@gmail.com

