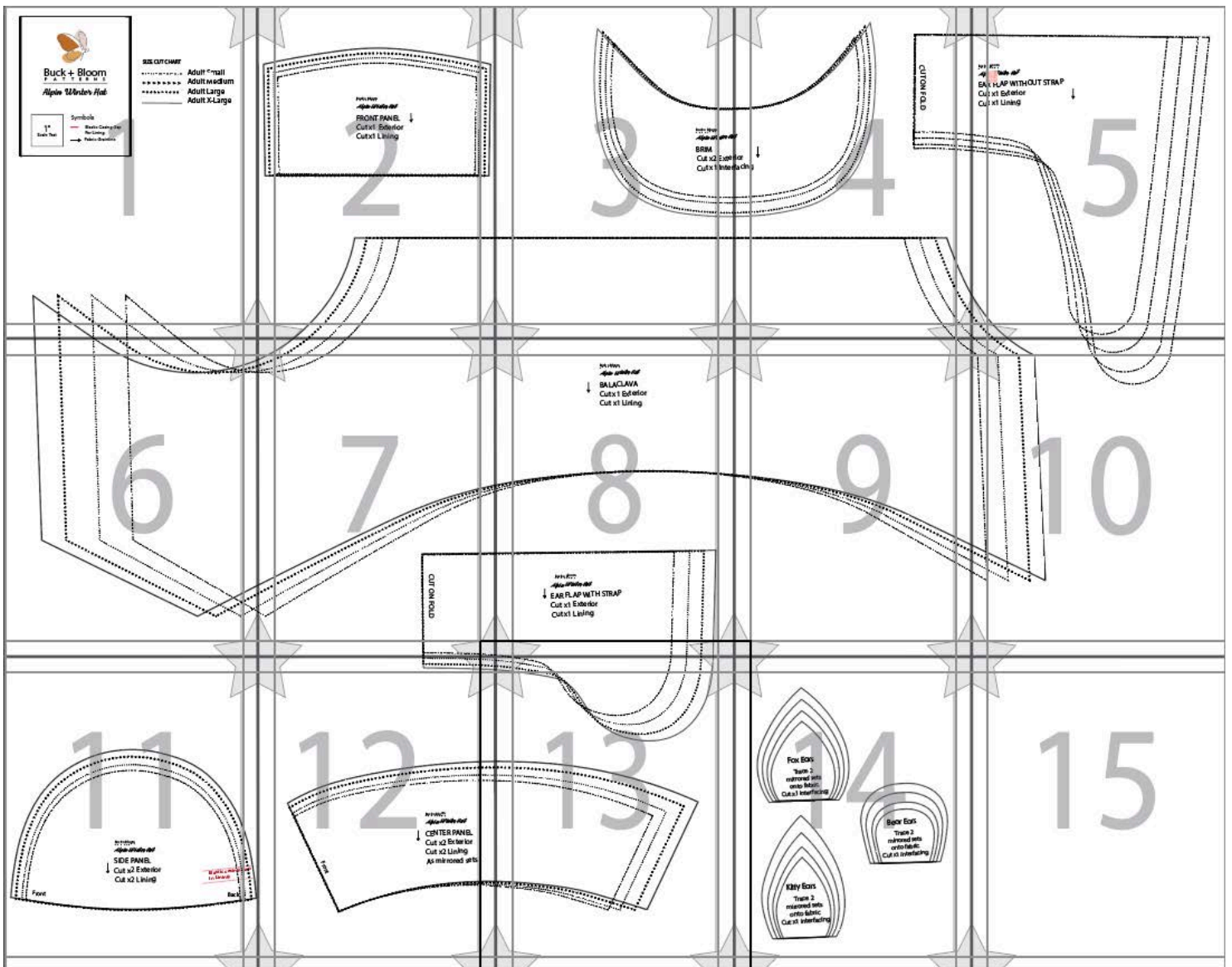


How to assemble

Arrange your pages by number, and then overlap each page by 1 /2" to align the frame lines and the stars in the corners.







Buck + Bloom

P A T T E R N S





Alpin Winter Hat

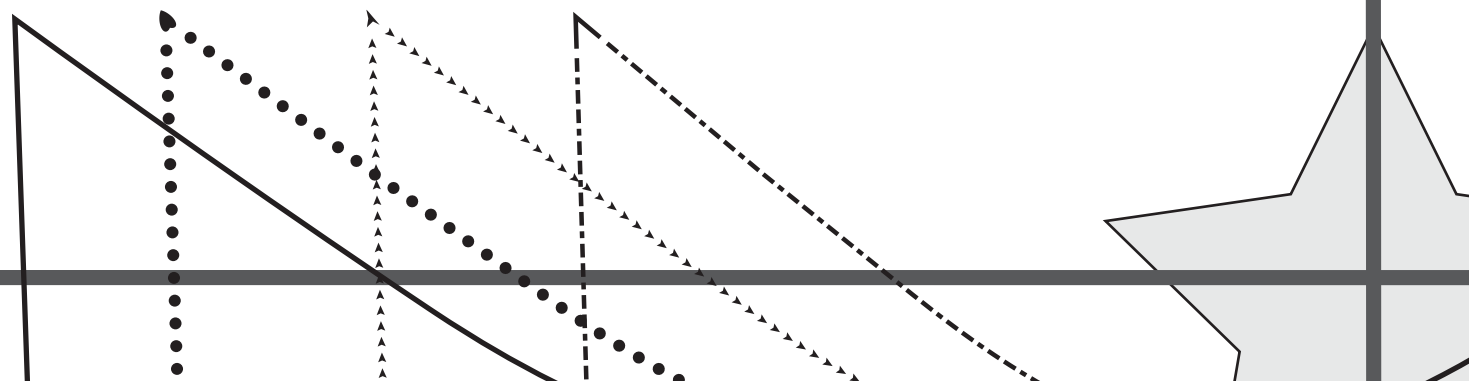


Symbols

-  Elastic Casing Gap For Lining.
-  Fabric Grainline

SIZE CUT CHART

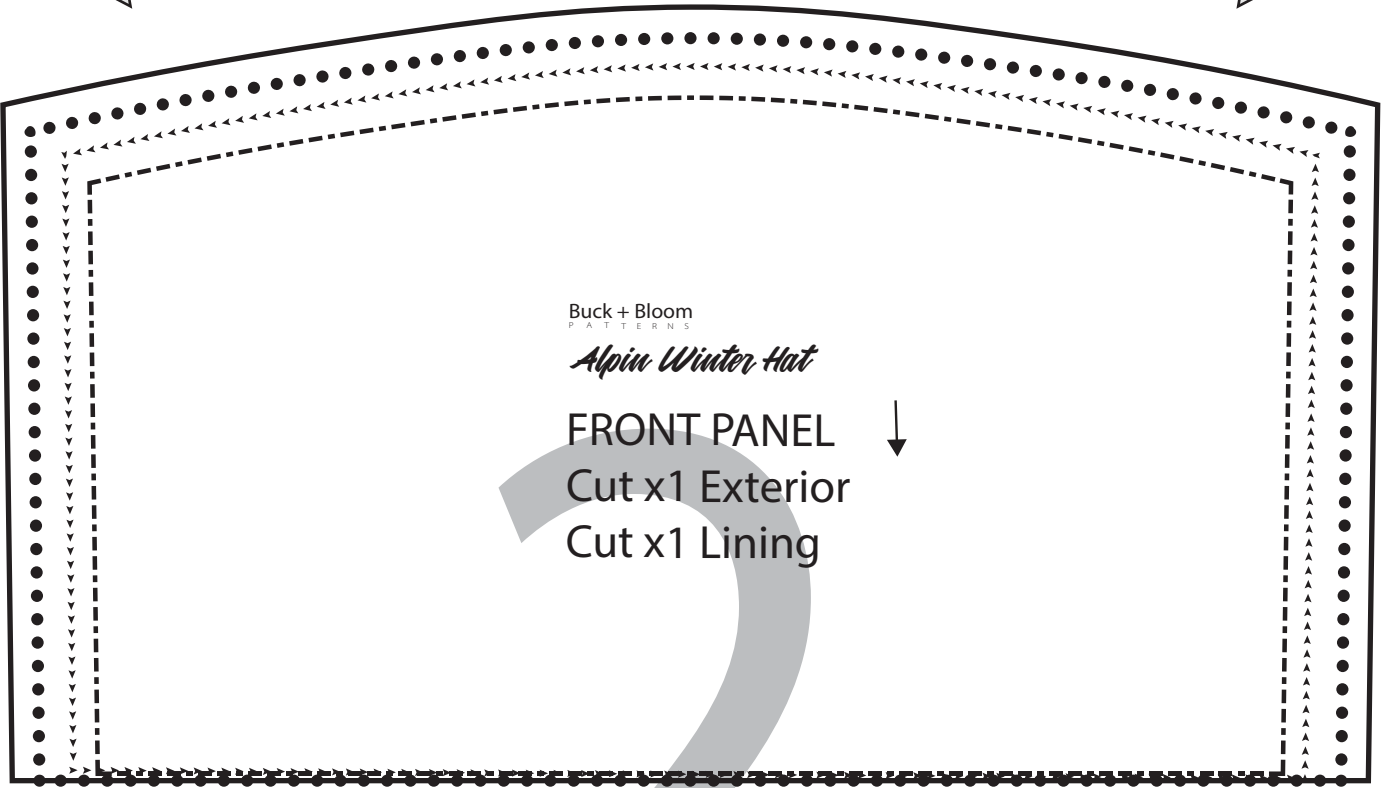
-  Adult Small
-  Adult Medium
-  Adult Large
-  Adult X-Large



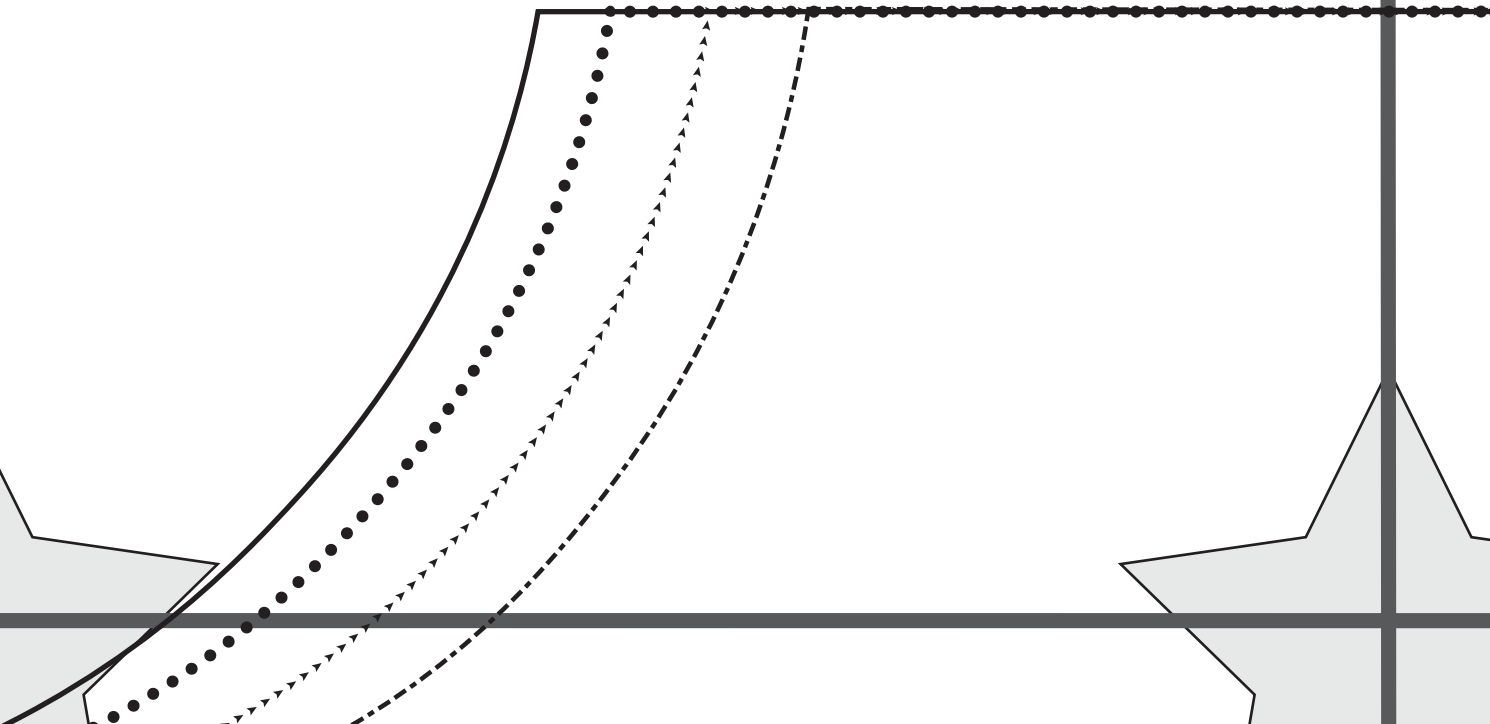
Buck + Bloom
P A T T E R N S

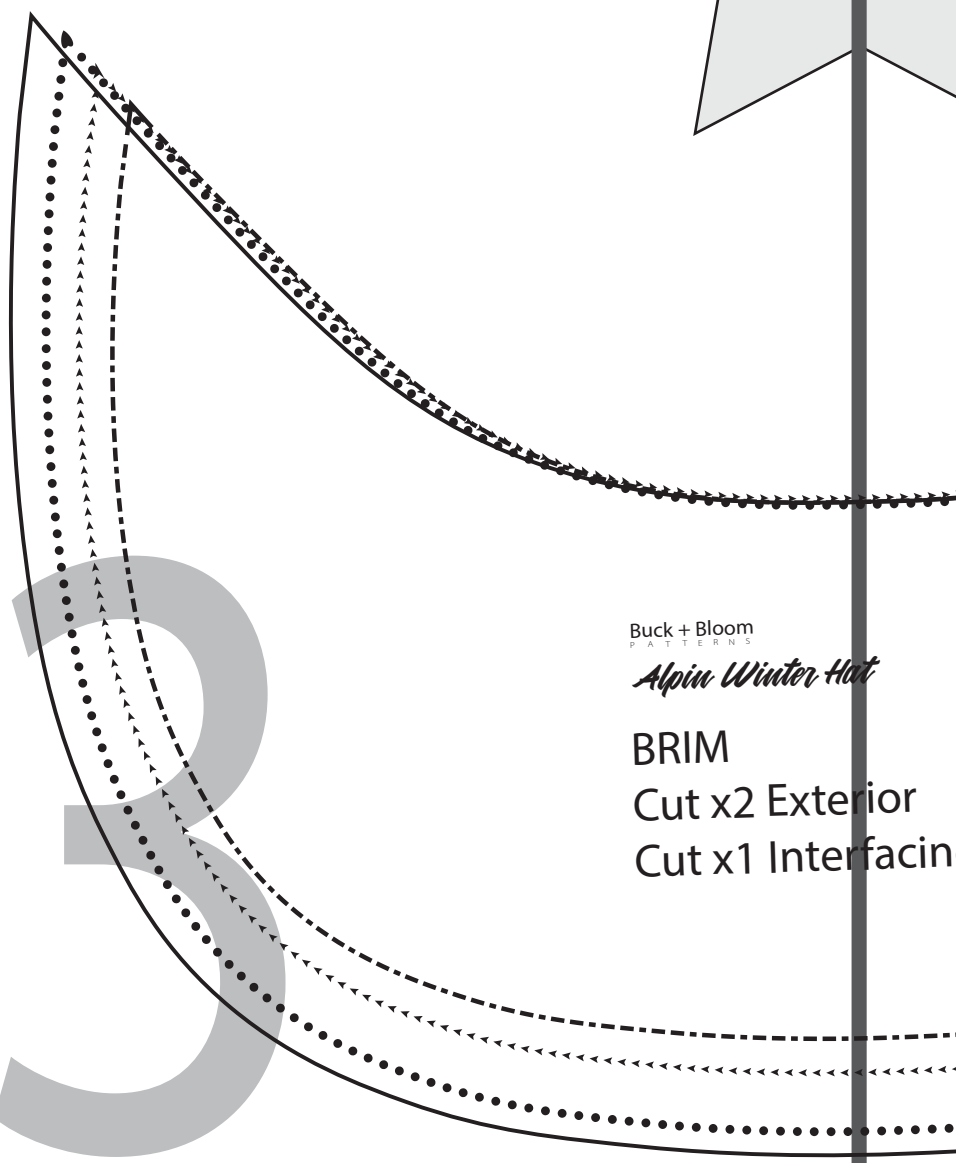
Alpin Winter Hat

FRONT PANEL ↓
Cut x1 Exterior
Cut x1 Lining



2





Buck + Bloom
P A T T E R N S

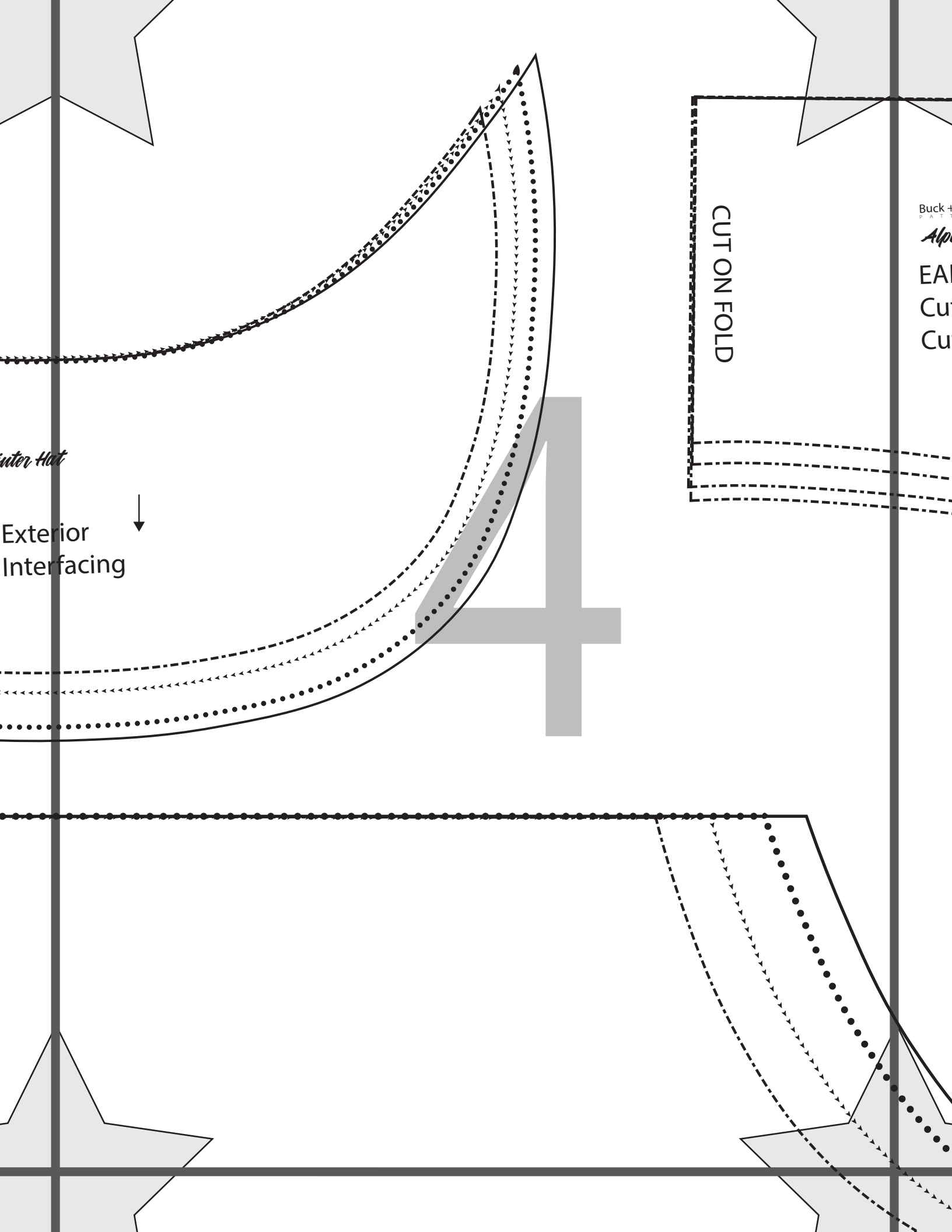
Alpin Winter Hat

BRIM

Cut x2 Exterior

Cut x1 Interfacin





Buck + Bloom
P A T T E R N S

Alpin Winter Hat

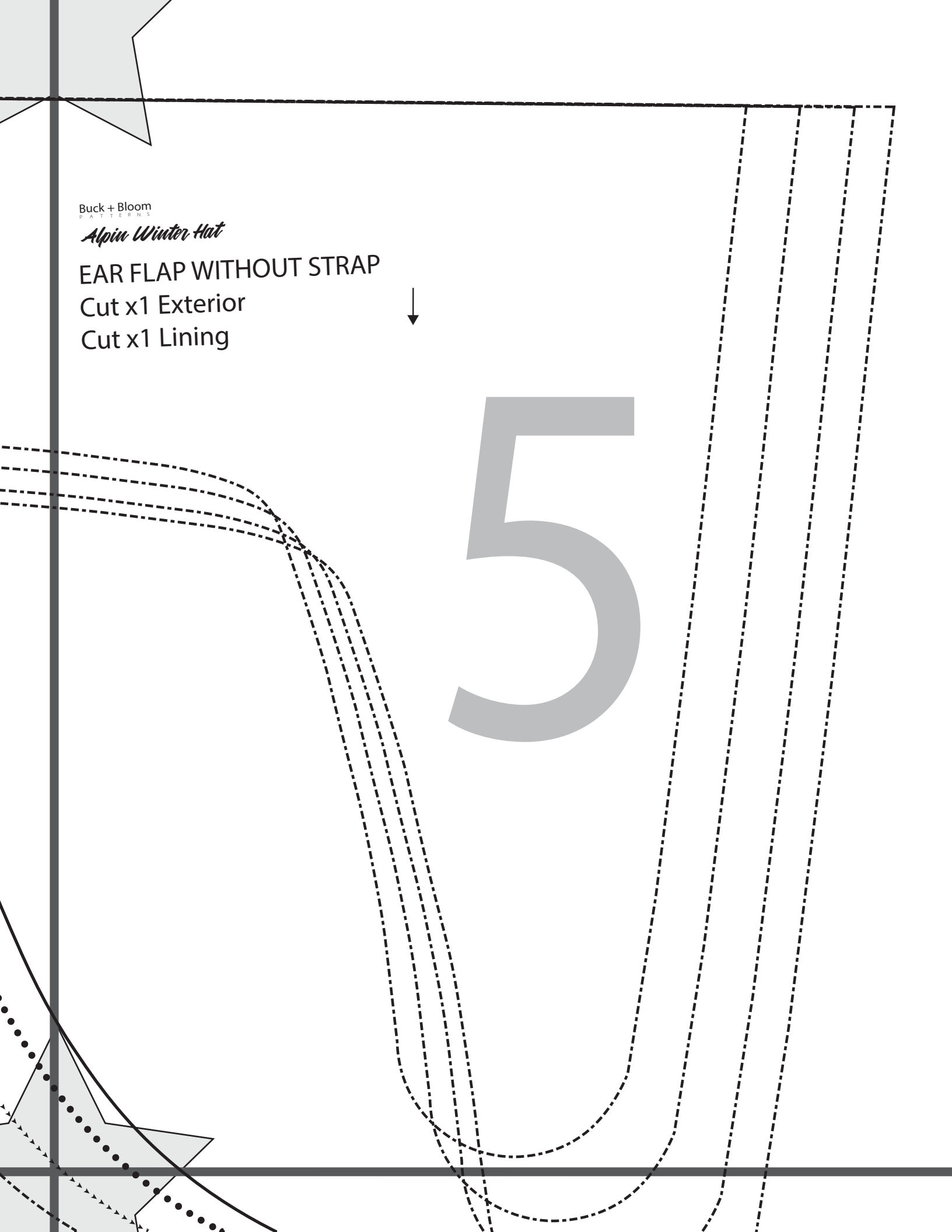
EAR FLAP WITHOUT STRAP

Cut x1 Exterior

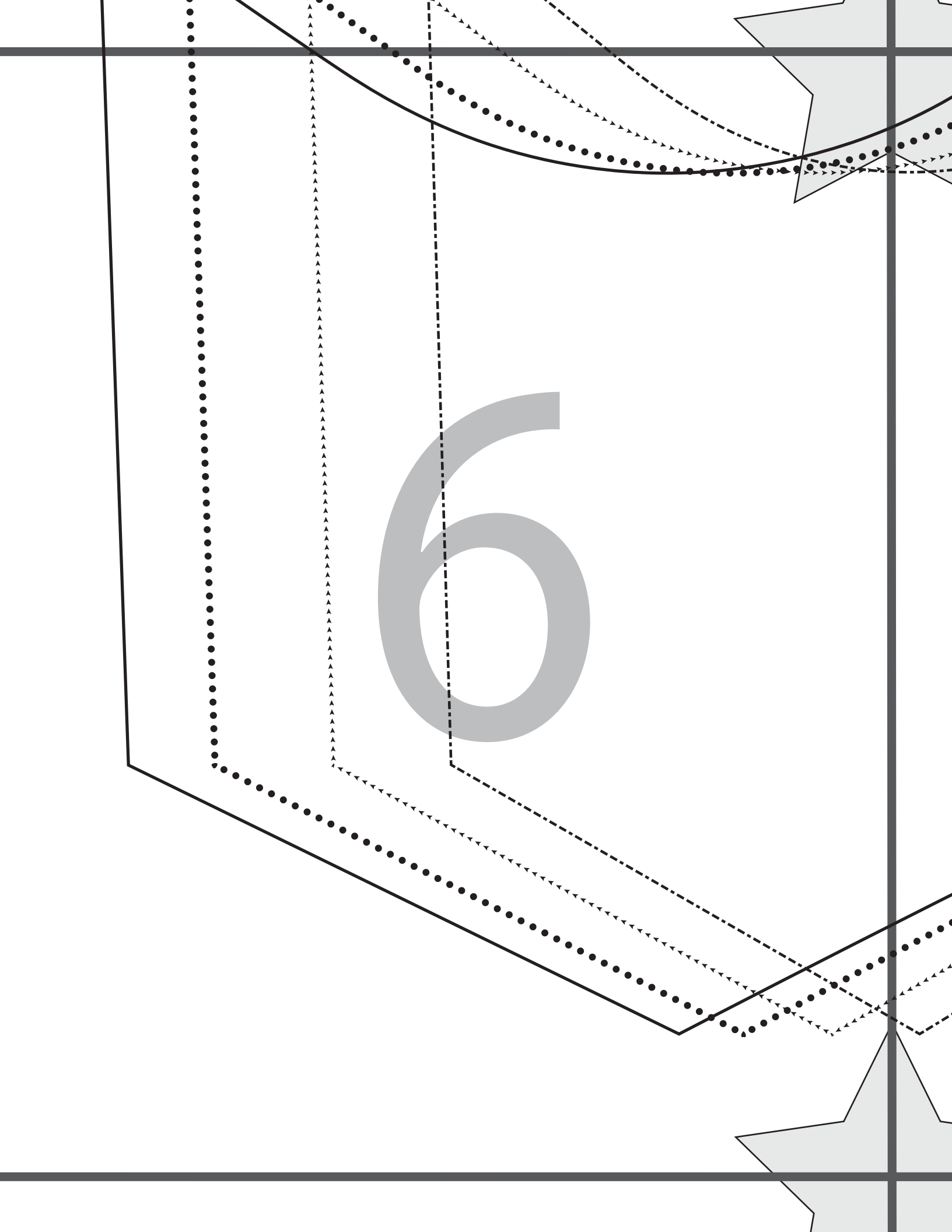
Cut x1 Lining

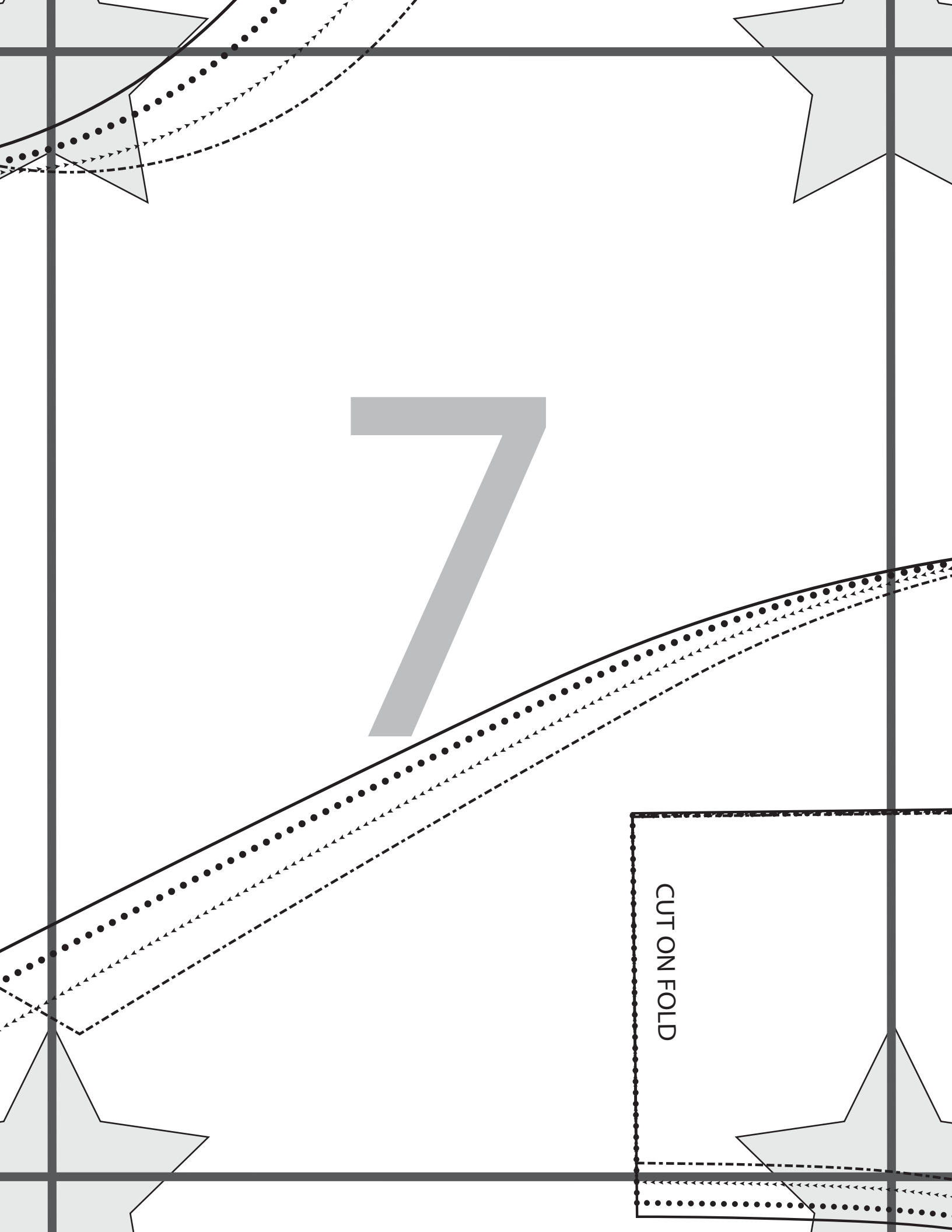


5



6





7

CUT ON FOLD

Buck + Bloom
PATTERNS

Alpin Winter Hat



BALACLAVA

Cut x1 Exterior

Cut x1 Lining



Buck + Bloom
PATTERNS

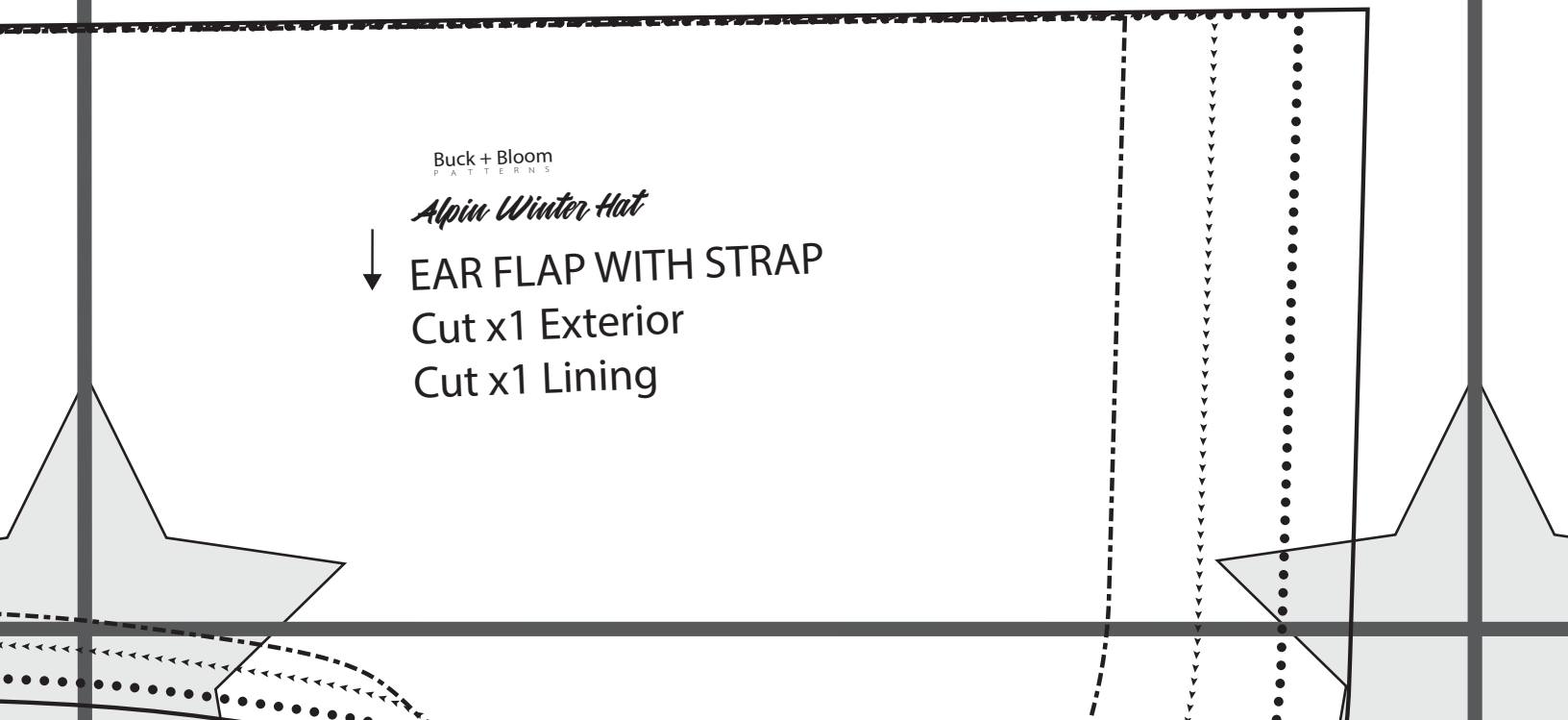
Alpin Winter Hat

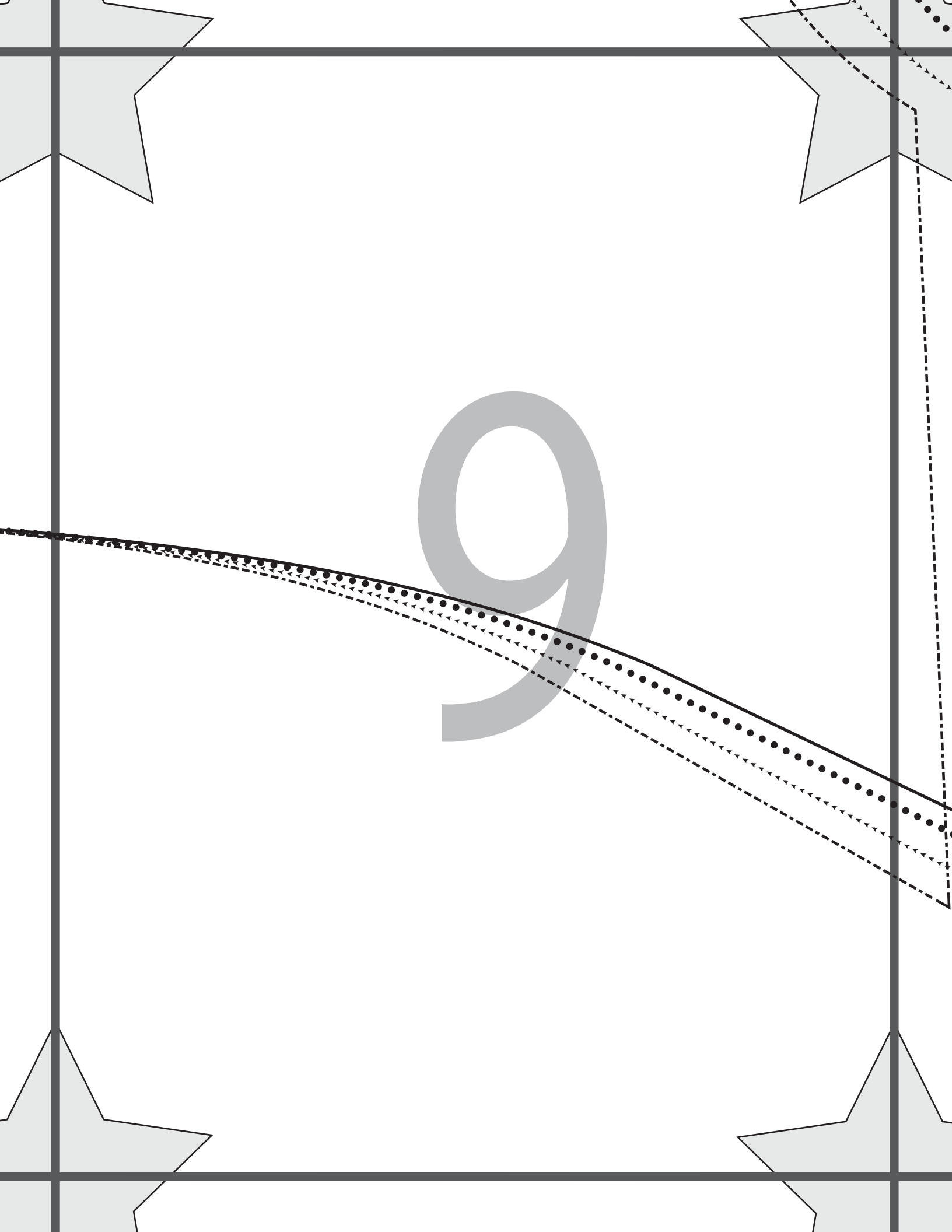


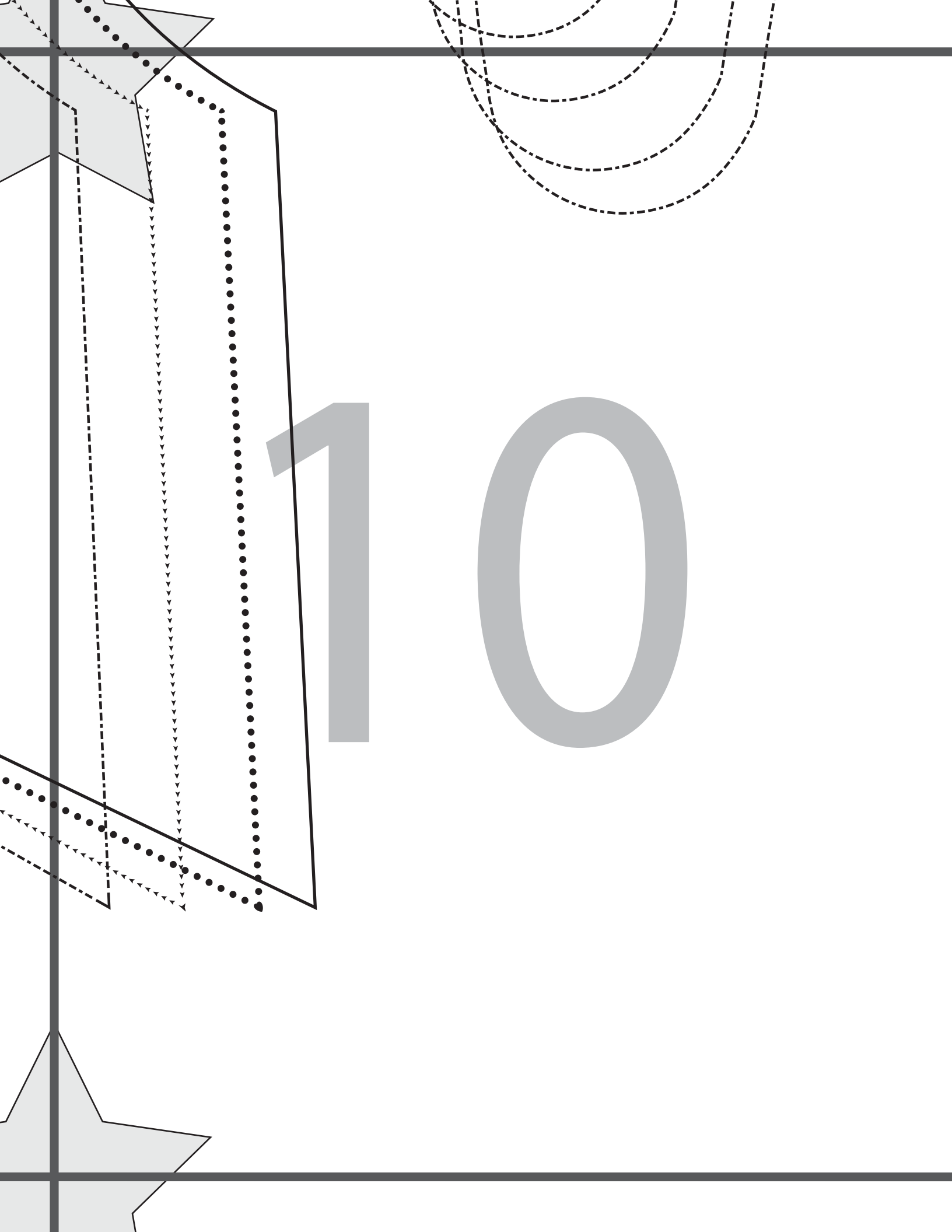
EAR FLAP WITH STRAP

Cut x1 Exterior

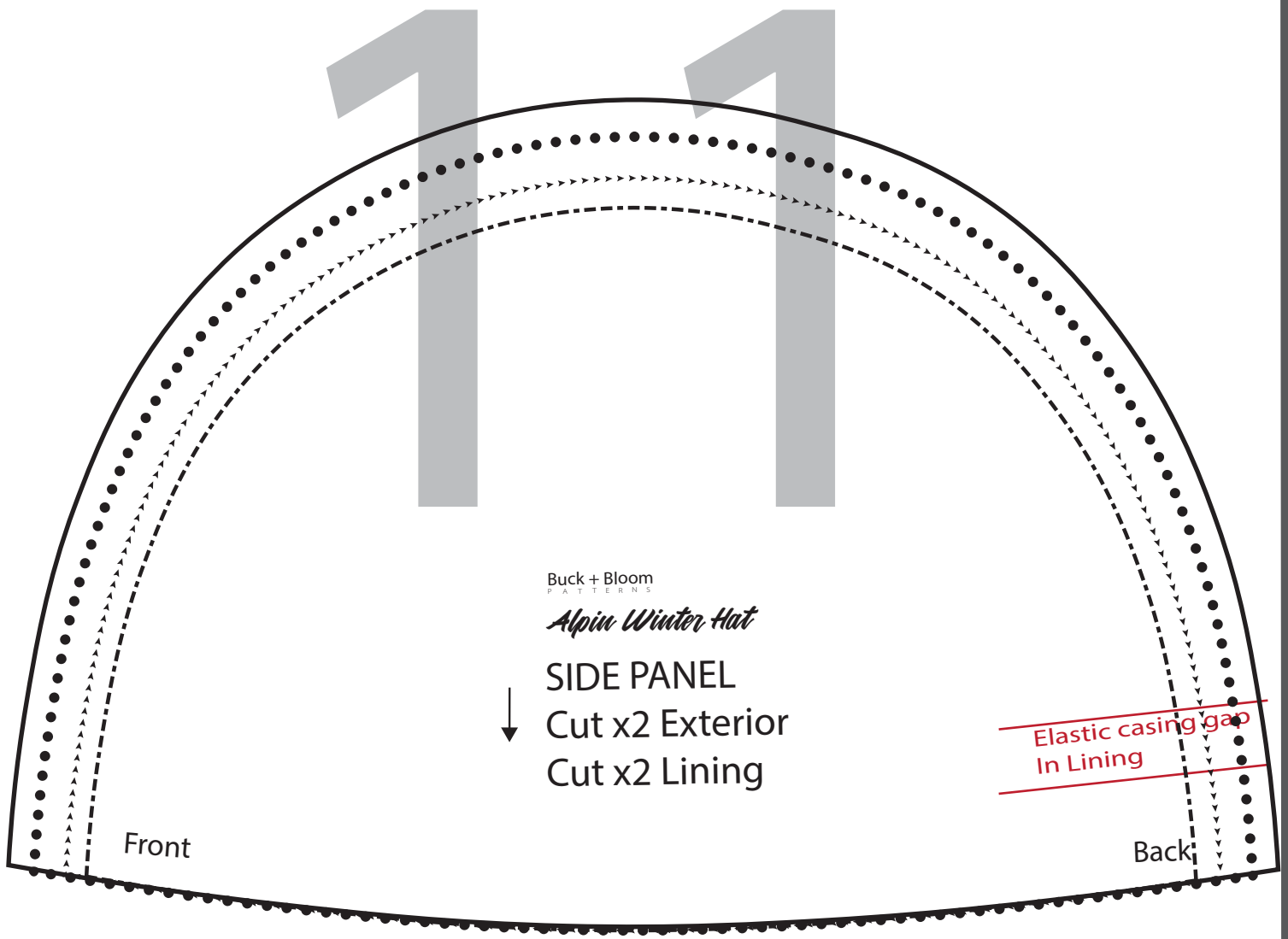
Cut x1 Lining







10



Buck + Bloom
P A T T E R N S

Alpine Winter Hat

SIDE PANEL

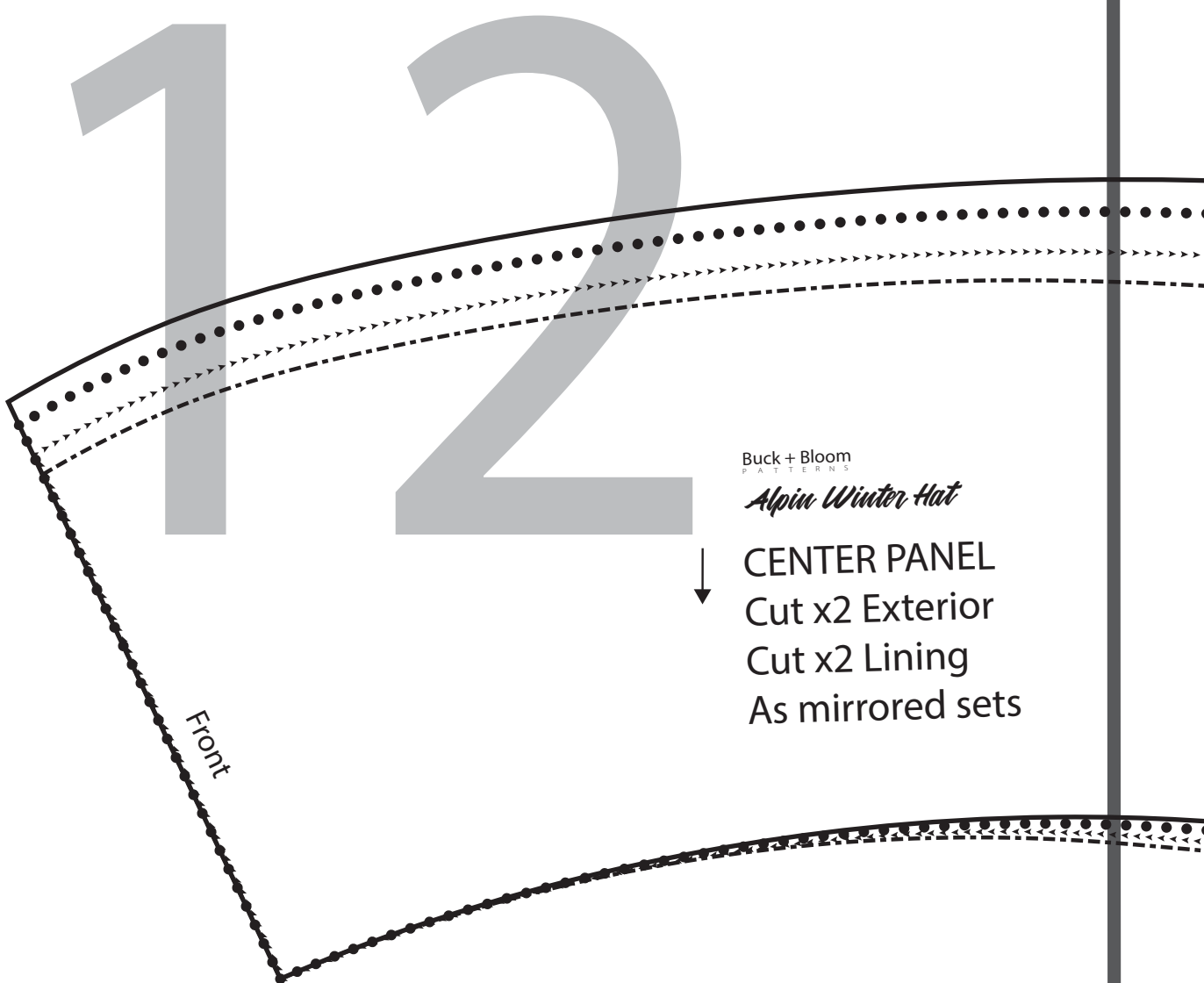
↓
Cut x2 Exterior

Cut x2 Lining

Elastic casing gap
In Lining

Front

Back



Buck + Bloom
PATTERNS

Alpin Winter Hat

↓
CENTER PANEL
Cut x2 Exterior
Cut x2 Lining
As mirrored sets



gap

