

| <b>XS</b>   | <b>Size S</b> | <b>Size M</b>    | <b>Size L</b>    | <b>Size XL</b>     |
|-------------|---------------|------------------|------------------|--------------------|
| <b>22</b>   | <b>23</b>     | <b>24 - 24.5</b> | <b>25 - 26</b>   | <b>27 - 27.5</b>   |
| <b>55.9</b> | <b>58.4</b>   | <b>61 - 62.2</b> | <b>63.5 - 66</b> | <b>68.6 - 69.9</b> |

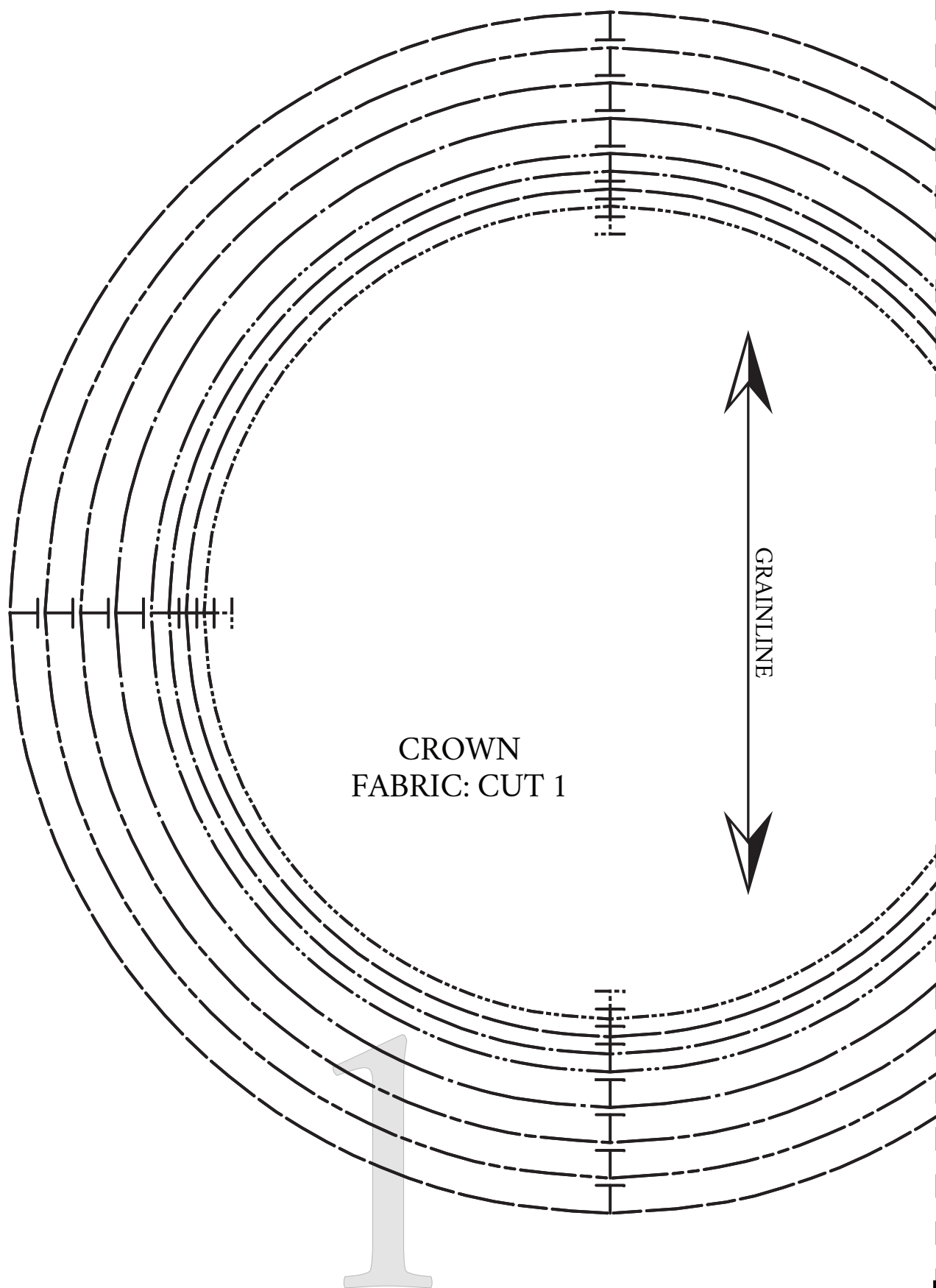
Best suited for medium- to heavy-weight woven fabrics, with fusible interfacing applied as necessary. Select your size based on the finished hat measurements for your preferred fit. For optimal results, create a test mock-up first to determine if any pattern adjustments are needed.

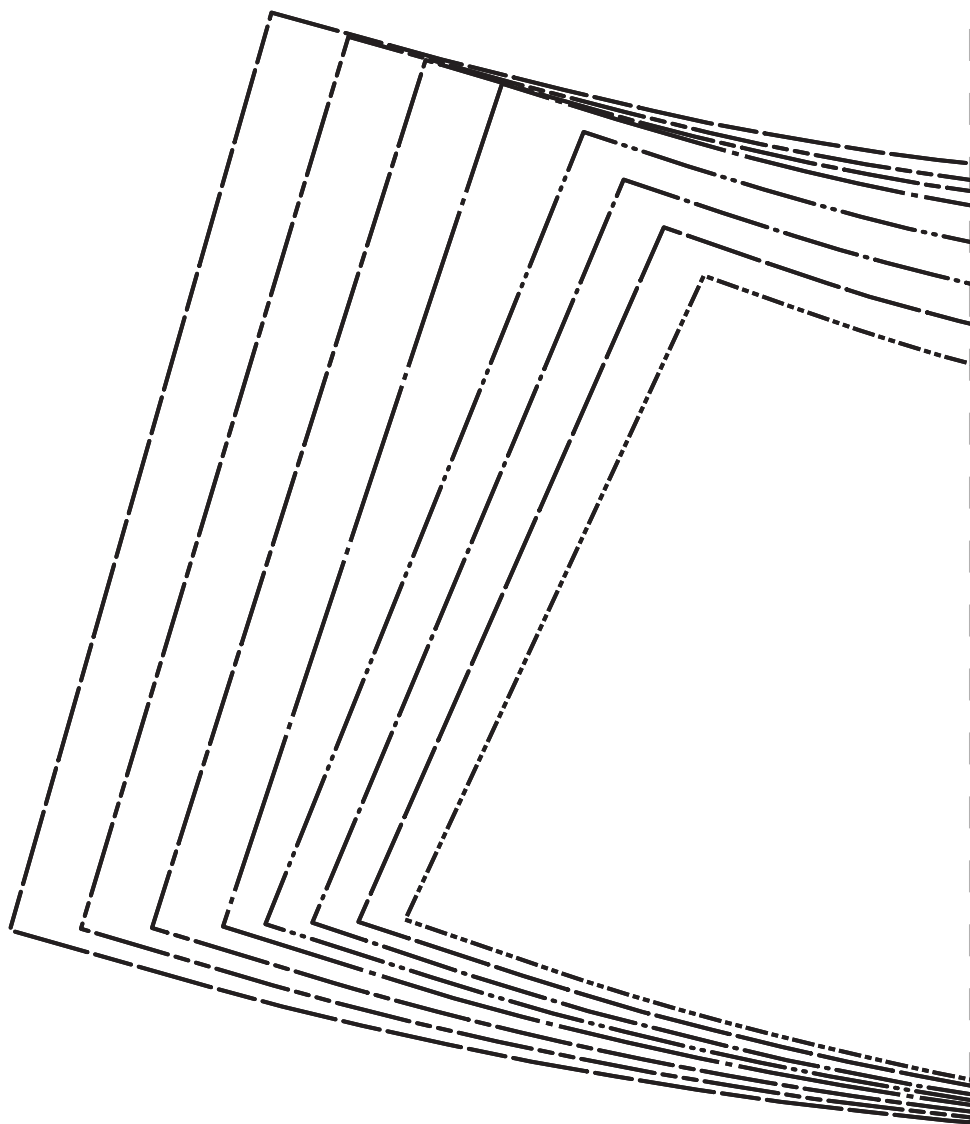
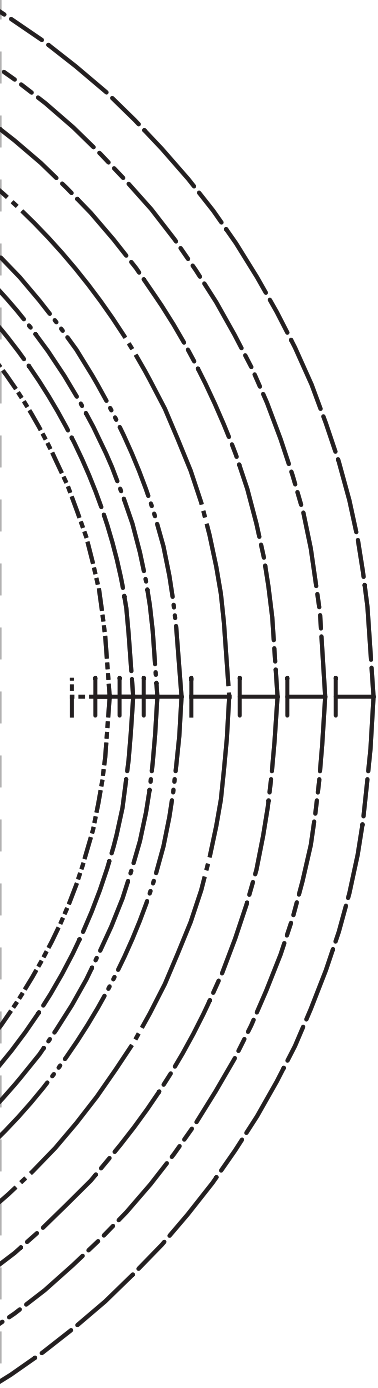
### Size Line Key

If you would like to know the Kids' sizes, please send me a message.

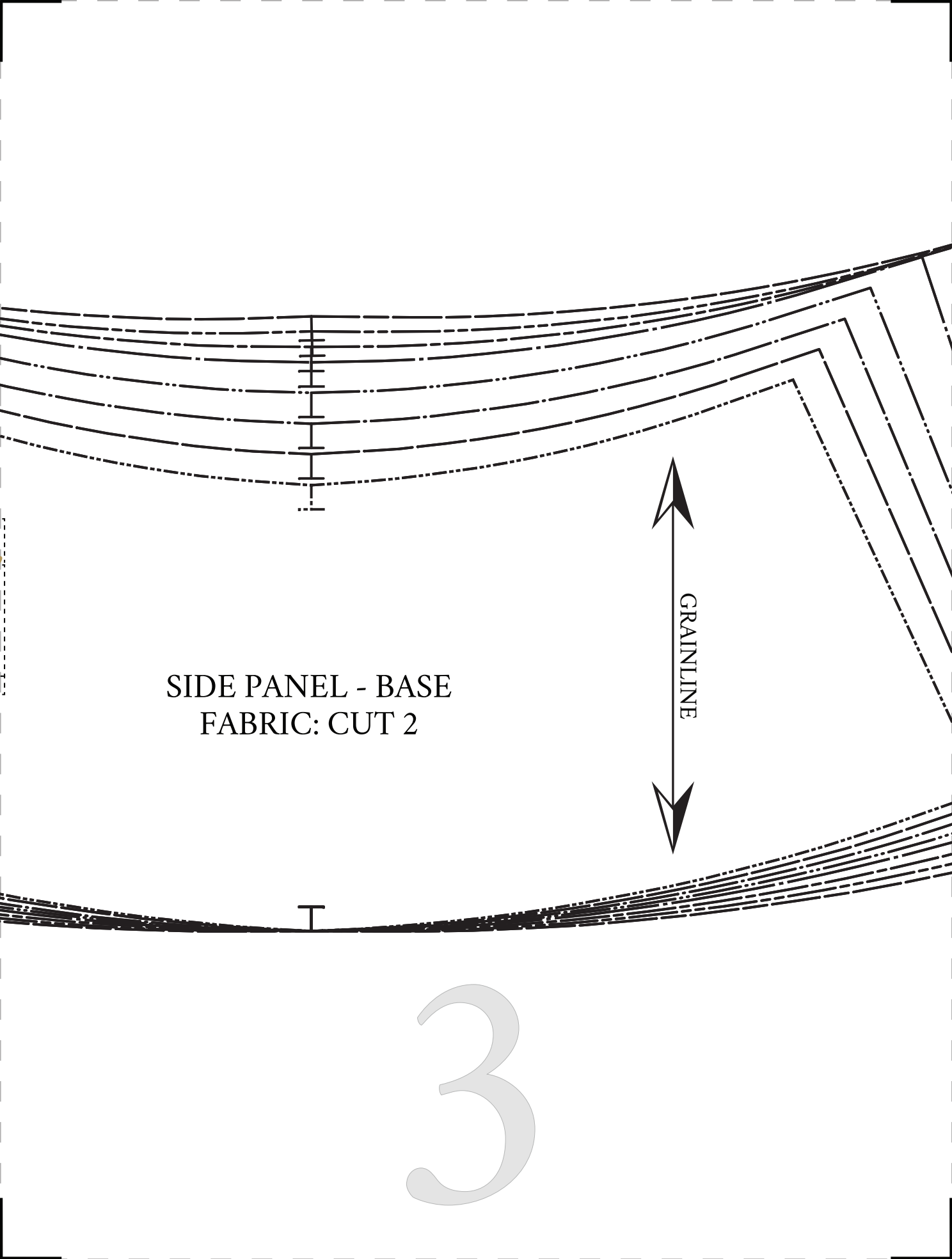
SIZE for Kids  
SIZE for Kids  
SIZE for Kids  
SIZE XS  
SIZE S  
SIZE M  
SIZE L  
SIZE XL

1/2" seam allowances (SA's) included





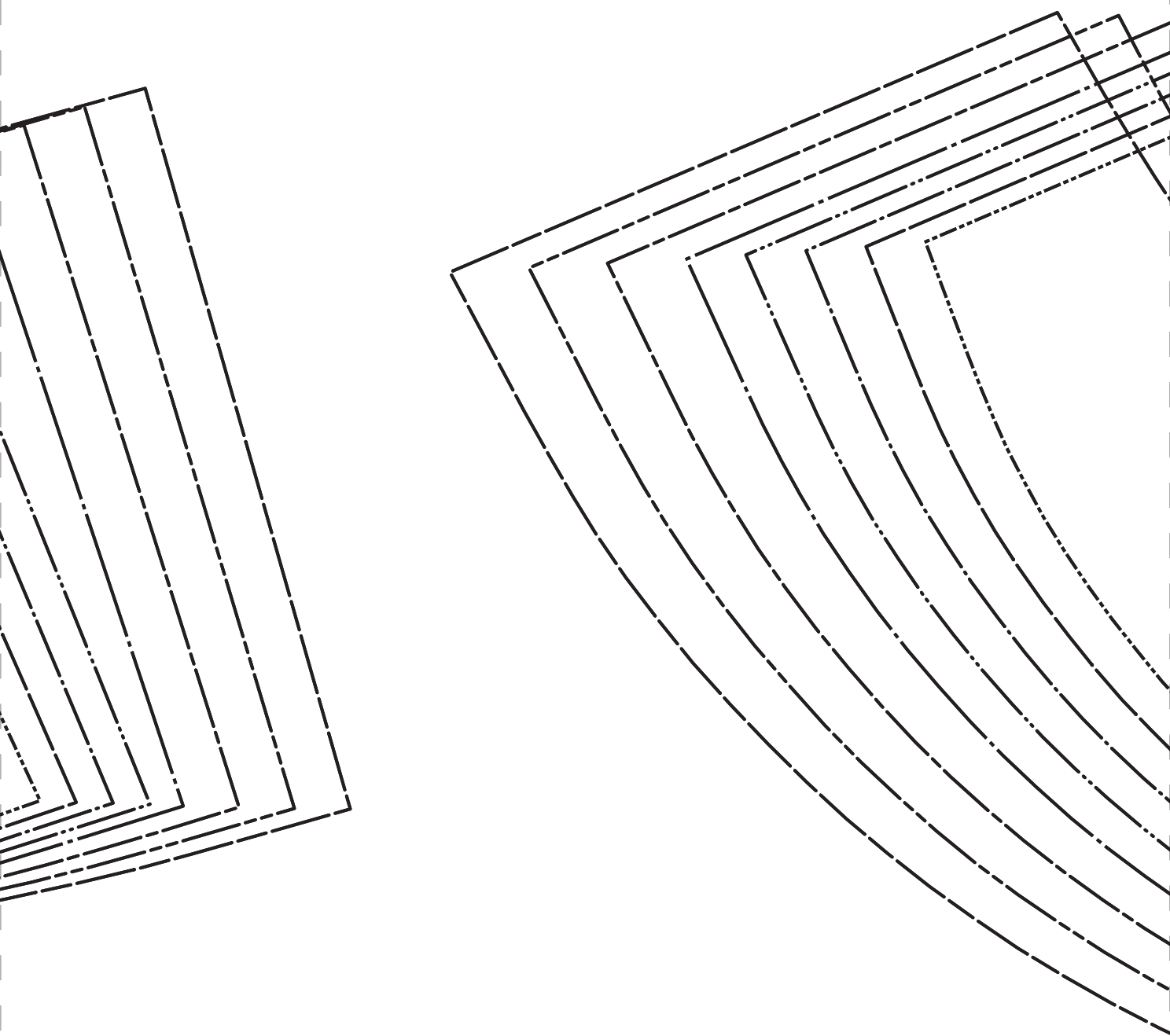
2



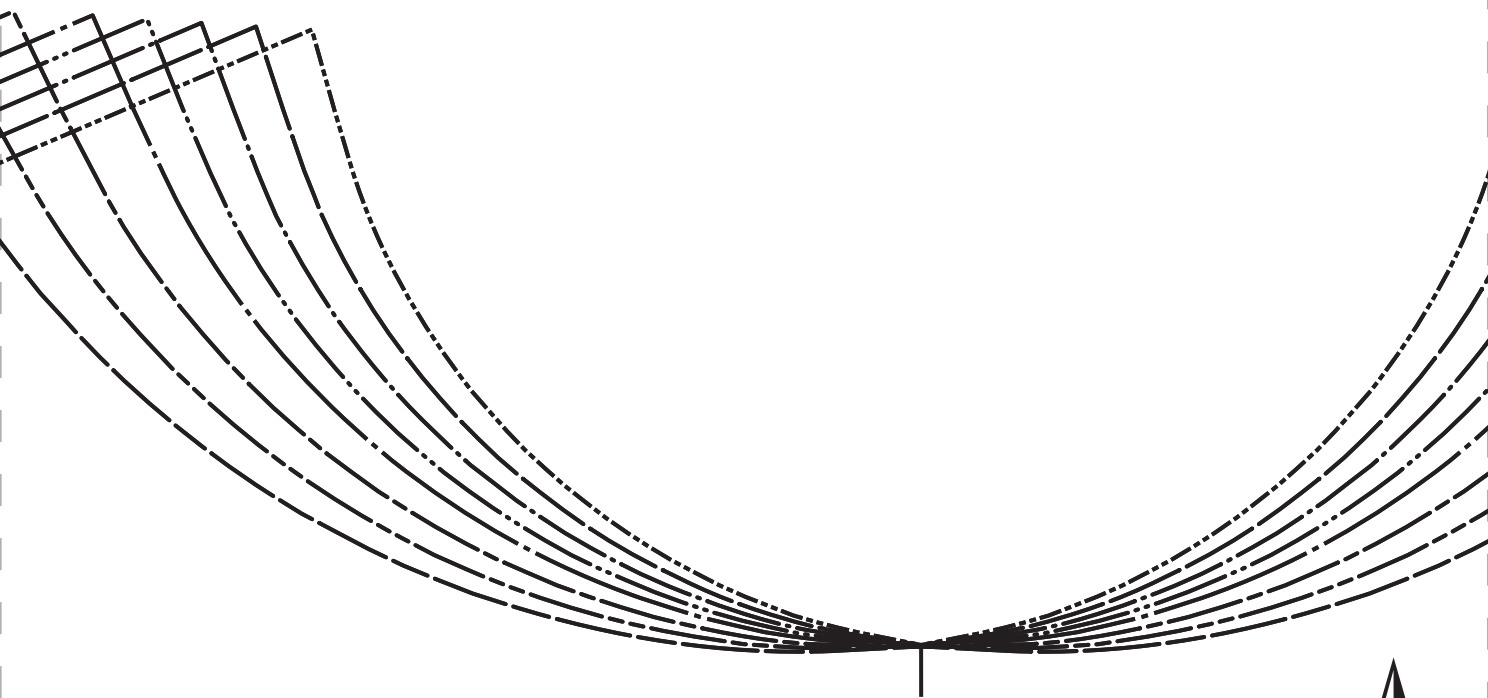
SIDE PANEL - BASE  
FABRIC: CUT 2

GRAINLINE

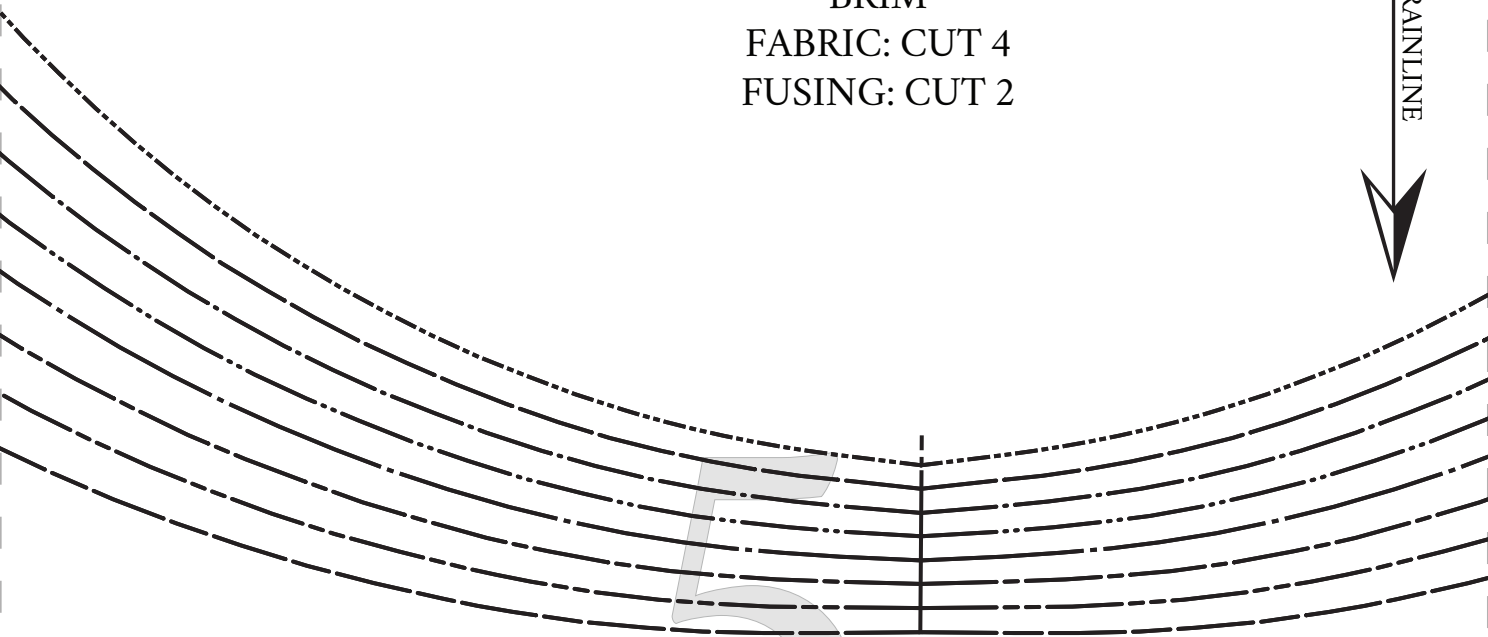
3

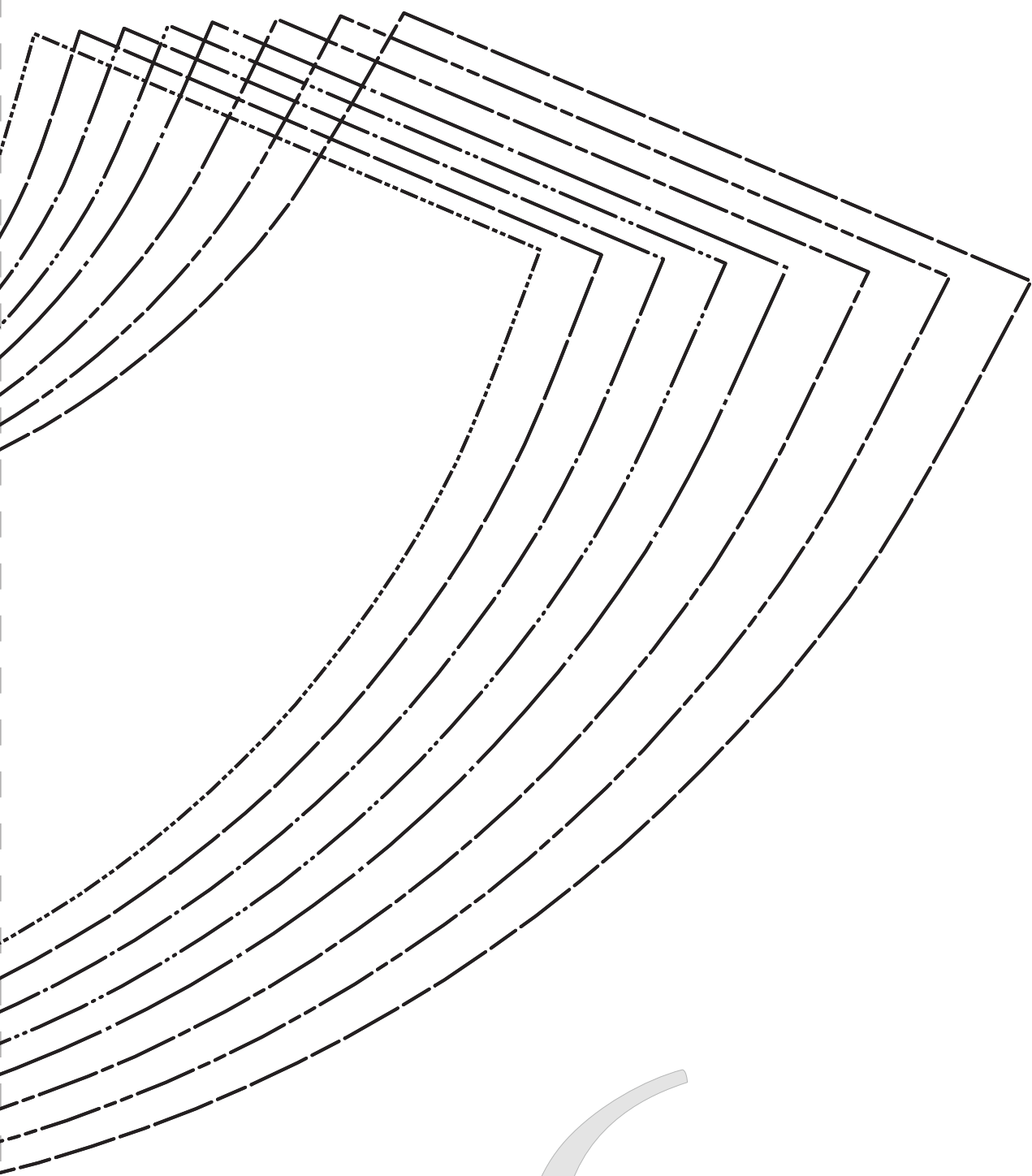


4



BRIM  
FABRIC: CUT 4  
FUSING: CUT 2





6