

2.5cm x 2.5cm

1" x 1"

2"

2

Side

Cut 1 on the fold from main fabric

Cut 1 on the fold from lining

4

Brim Top

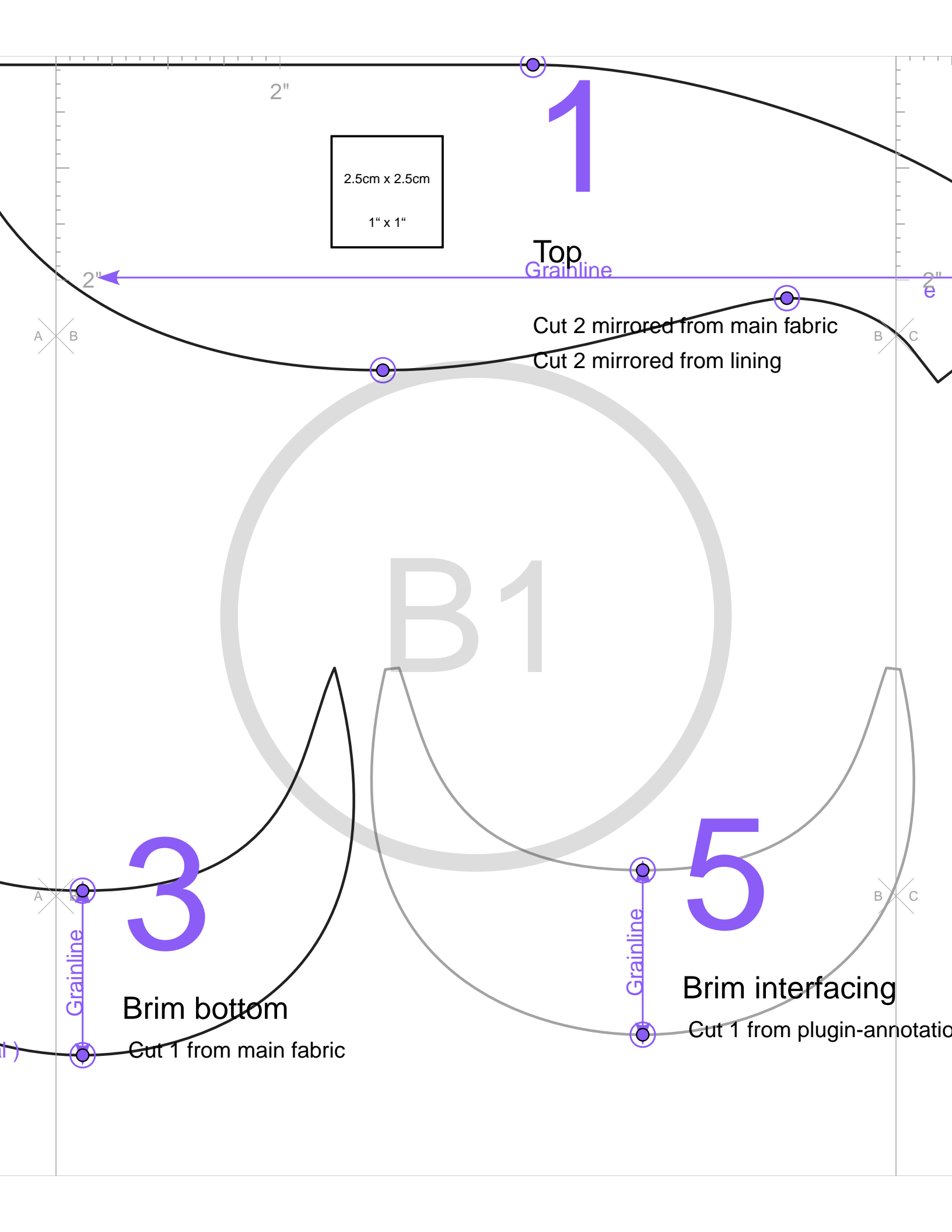
Cut 1 from main fabric

Grainline

Grainline

A B

A



2"

2.5cm x 2.5cm
1" x 1"

1

Top
Grainline

2"

2"

A B

B C

Cut 2 mirrored from main fabric

Cut 2 mirrored from lining

B1

3

Grainline

Brim bottom

Cut 1 from main fabric

5

Grainline

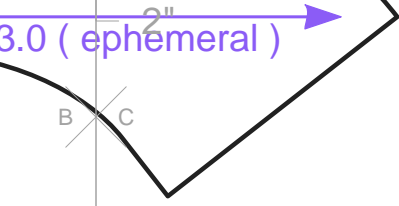
Brim interfacing

Cut 1 from plugin-annotation

A B

B C

2"



cing
ugin-annotations:rigidInterfacing