

2"

Cut on fold / Grainline

2.5cm x 2.5cm

1" x 1"

2"

2"

2

Side

Cut 1 on the fold from main fabric

Cut 1 on the fold from lining

A B

A B

4

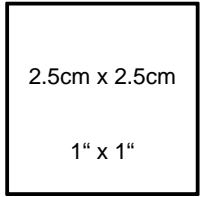
Grainline

1
2
2"

1
2

2"

2"



2.5cm x 2.5cm

1" x 1"

2"

meral)

B1



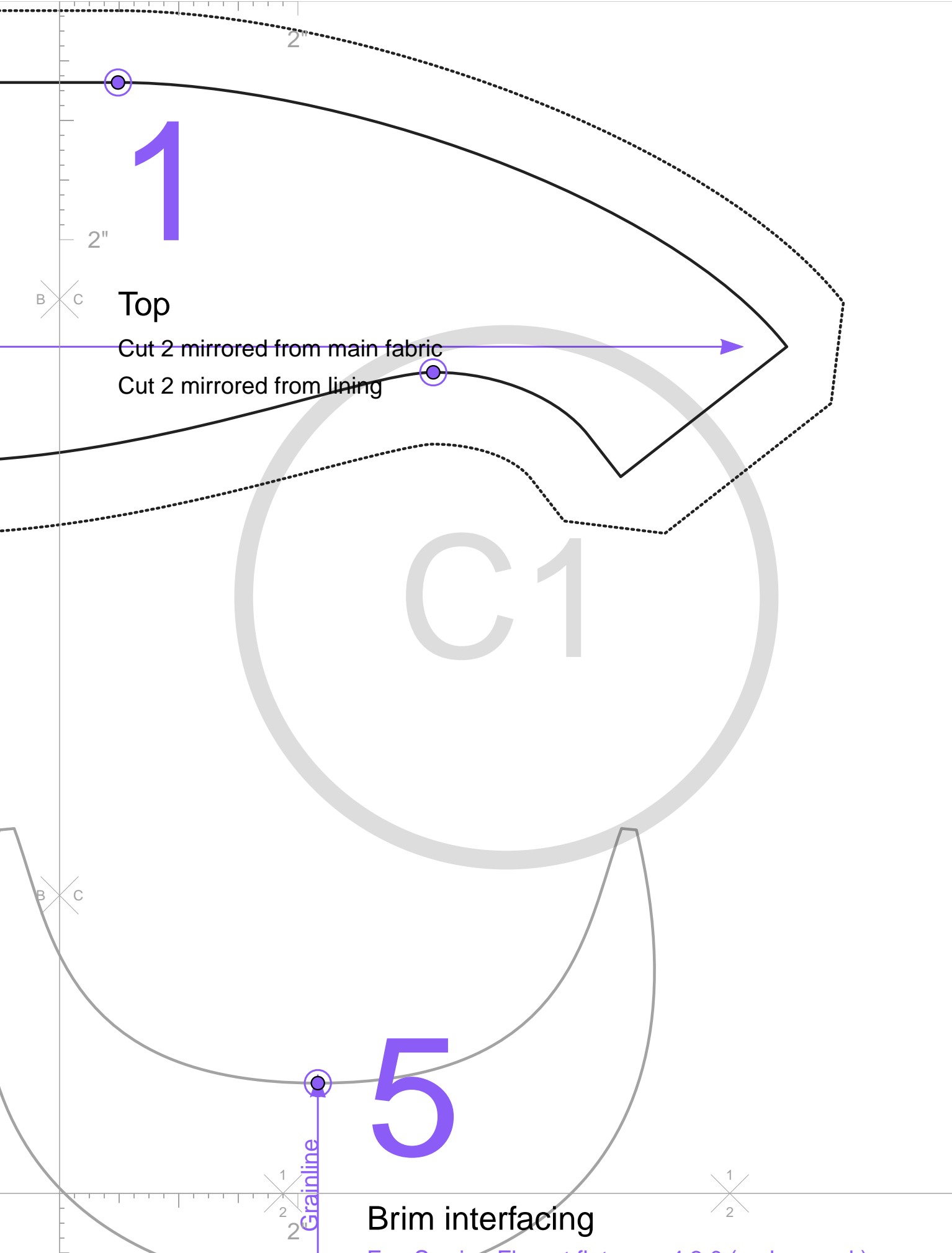
3

mainline



2"

2"



1

Top

Cut 2 mirrored from main fabric
Cut 2 mirrored from lining

5

Brim interfacing

Grainline

C1

2"

2"

B C

B C

1
2
2

1
2

4

Grainline

Brim Top

Cut 1 from main fabric



2"

2"



A2



(ephemeral)

3

Grainline

Brim bottom

Cut 1 from main fabric

1
2
2"

1
2

2"

2"

A B

B C

A B

B C



1
2
2

Grainline

Brim interfacing

Cut 1 from plugin-annotations:rigidInterfacing

1
2

2"

B C



B C