

2"

Cut on fold / Grainline

2.5cm x 2.5cm

1" x 1"

2"

2"

A B

2

Side

Cut 1 on the fold from main fabric

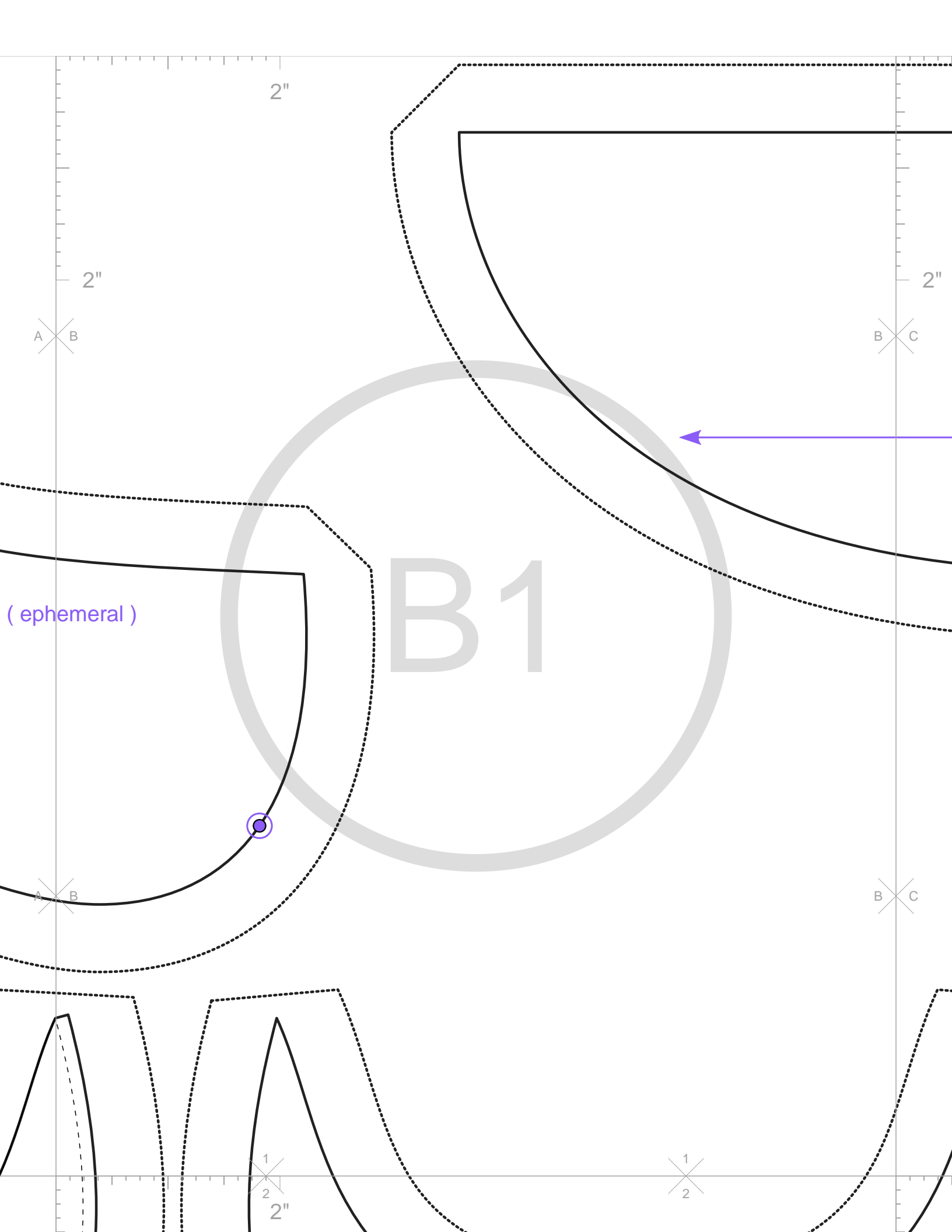
Cut 1 on the fold from lining



A B

1
2
2"

1
2



2"

2"

2"



2.5cm x 2.5cm
1" x 1"

1

Top

Grainline

Cut 2 mirrored from main fabric

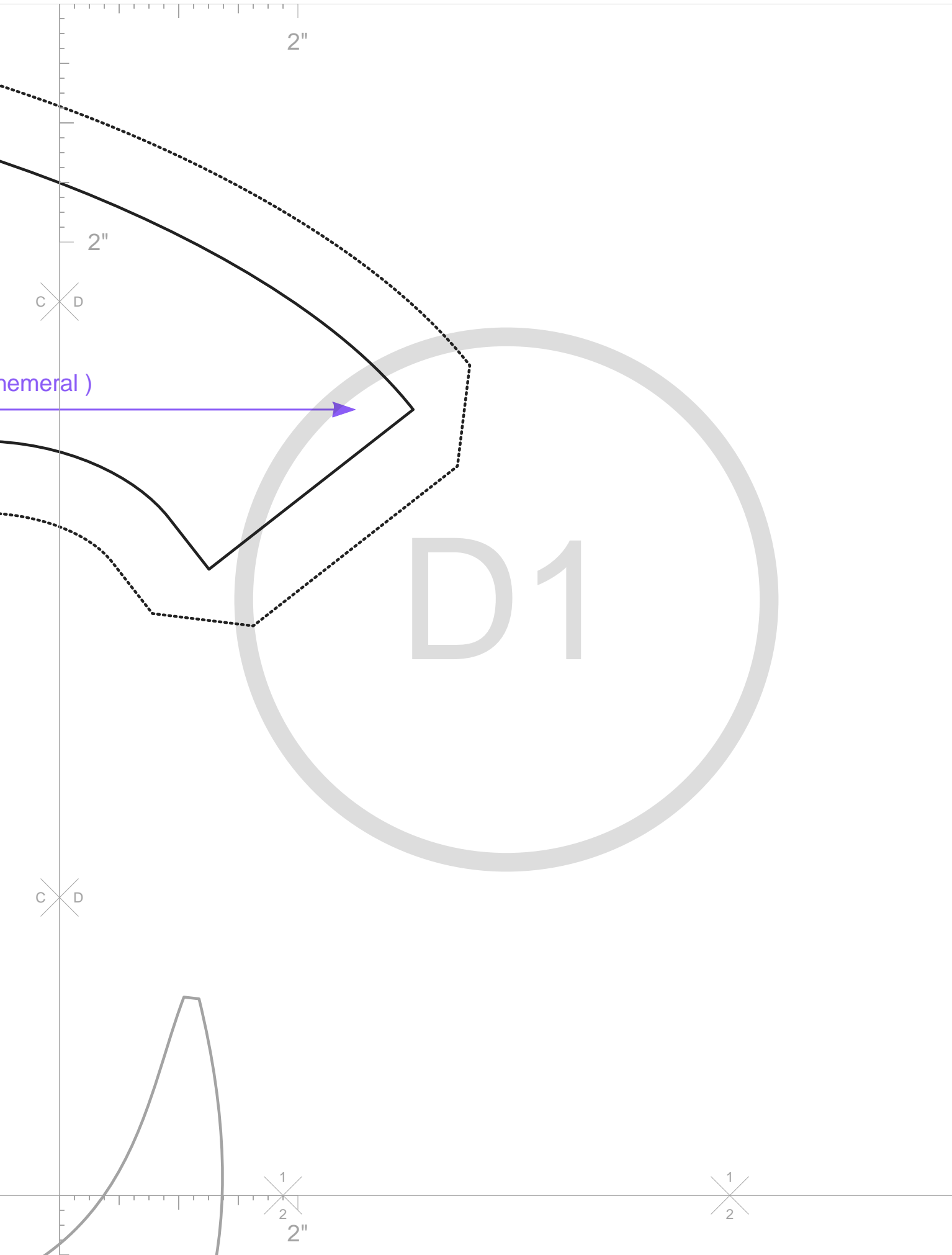
Cut 2 mirrored from lining

C1



1
2
2"







2"

2"



Grainline



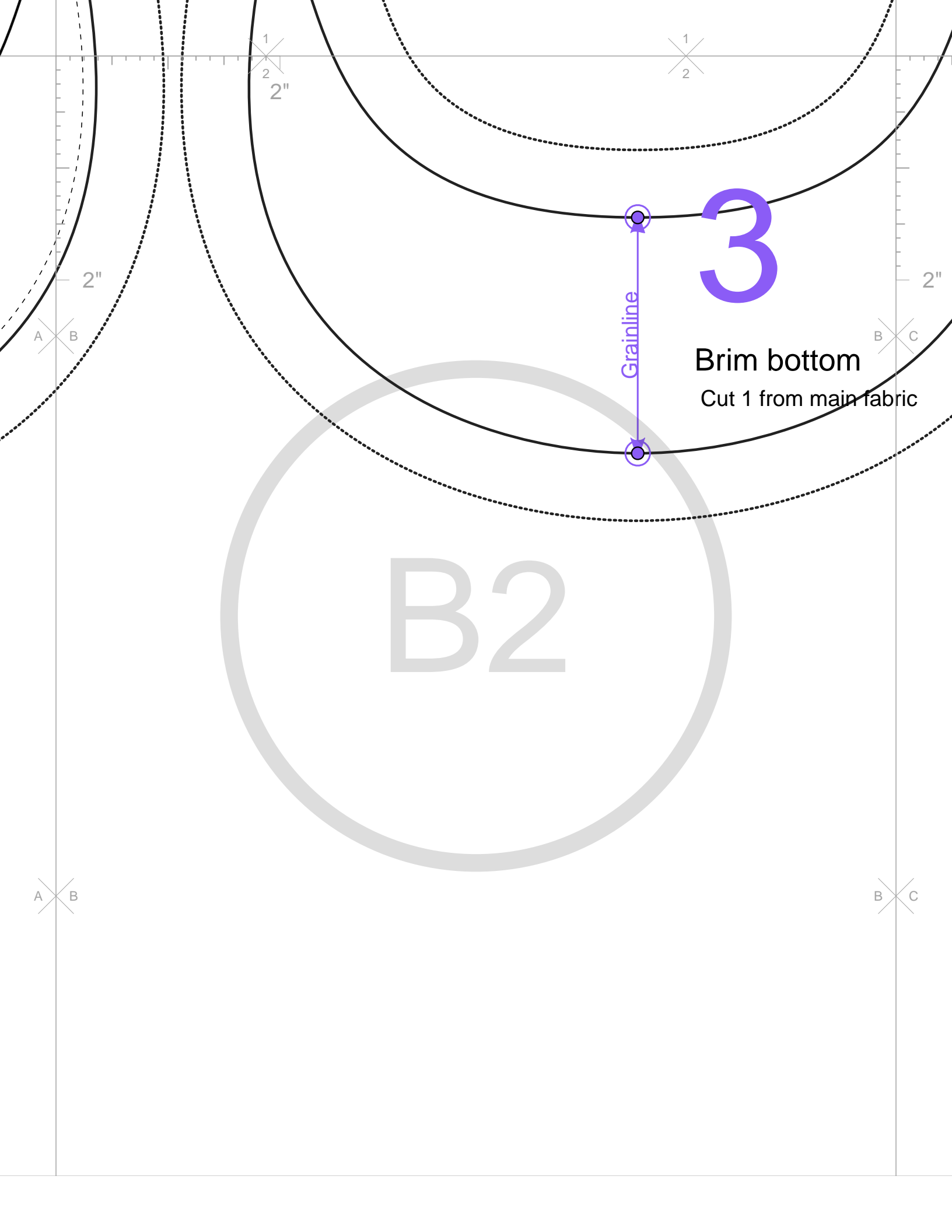
4

Brim Top

Cut 1 from main fabric



A2



1
2
2"

1
2

2"

A B

B C

2"

3

Grainline

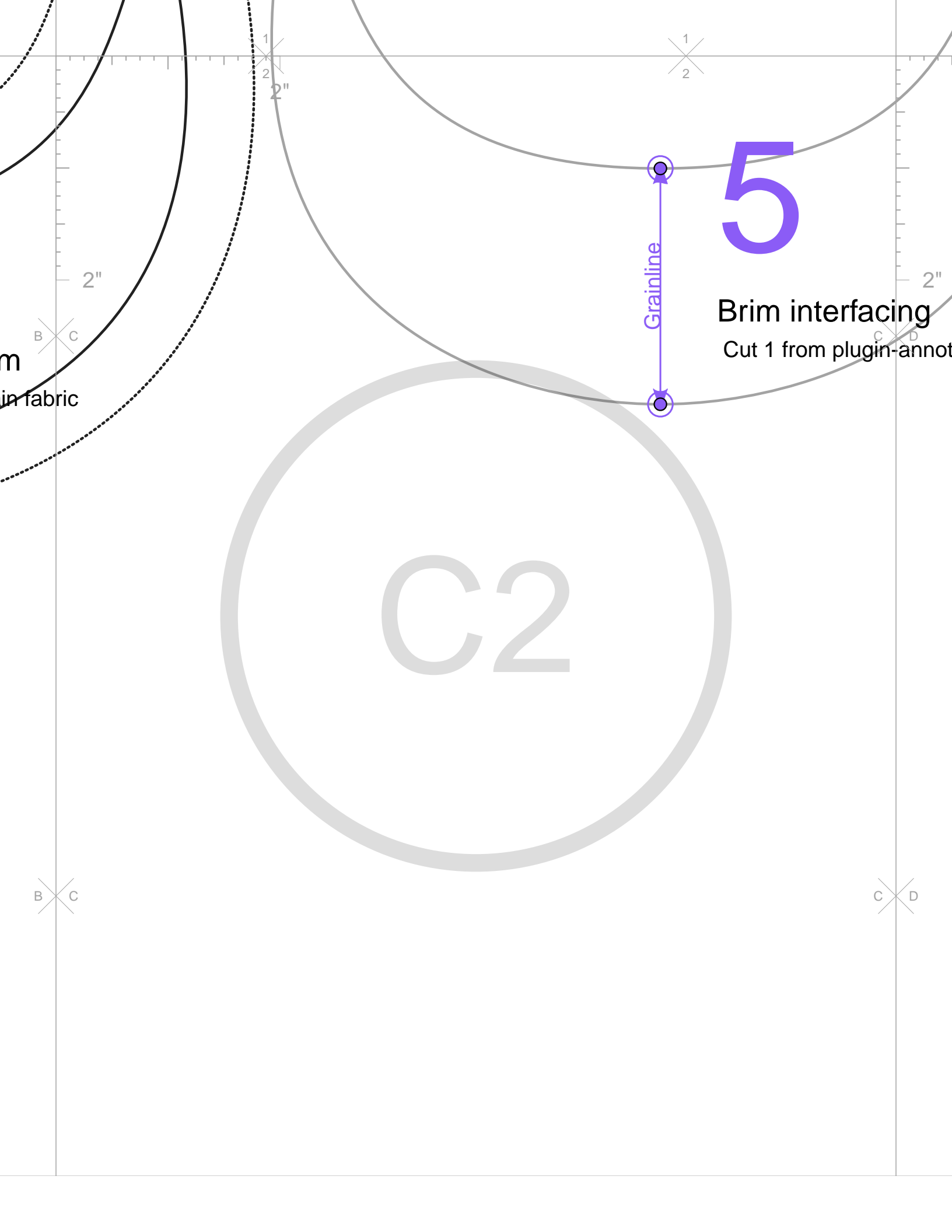
Brim bottom

Cut 1 from main fabric

B2

A B

B C



5

Brim interfacing
Cut 1 from plugin-annot

Grainline

C2

2"

2"

2"

B C

C D

B C

C D

m
in fabric

