

1" / 2.5cm

**SYMBOLS**

- V single notch
- W double notch
- button hole

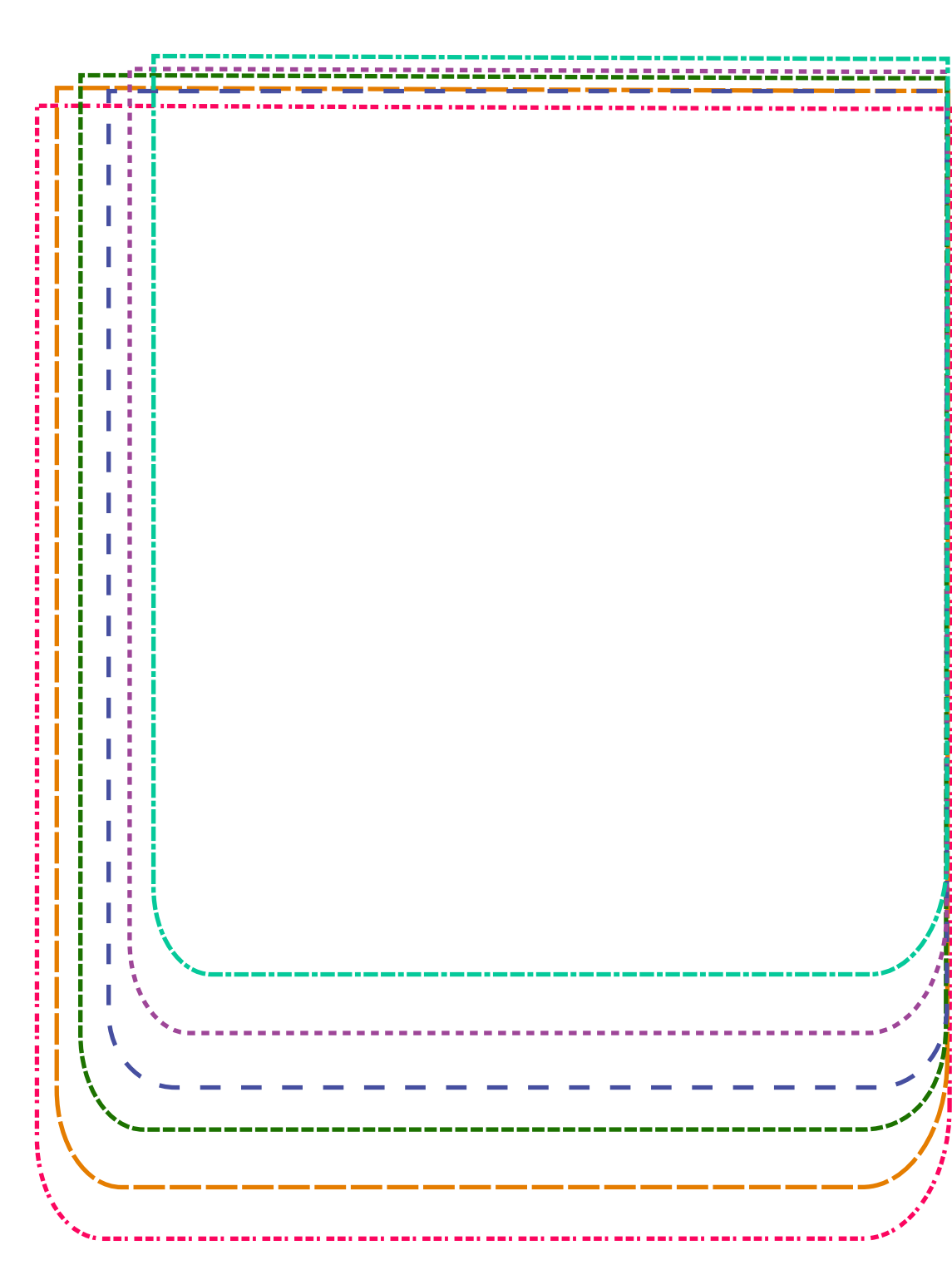
- 1/2" seam allowance included, but not shown
- follow grainline and fold line instructions on pattern pieces

**CUT LINES FOR SIZES**

- Men's XS
- Men's S
- Men's M
- Men's L
- Men's XL
- Men's XXL

**A**

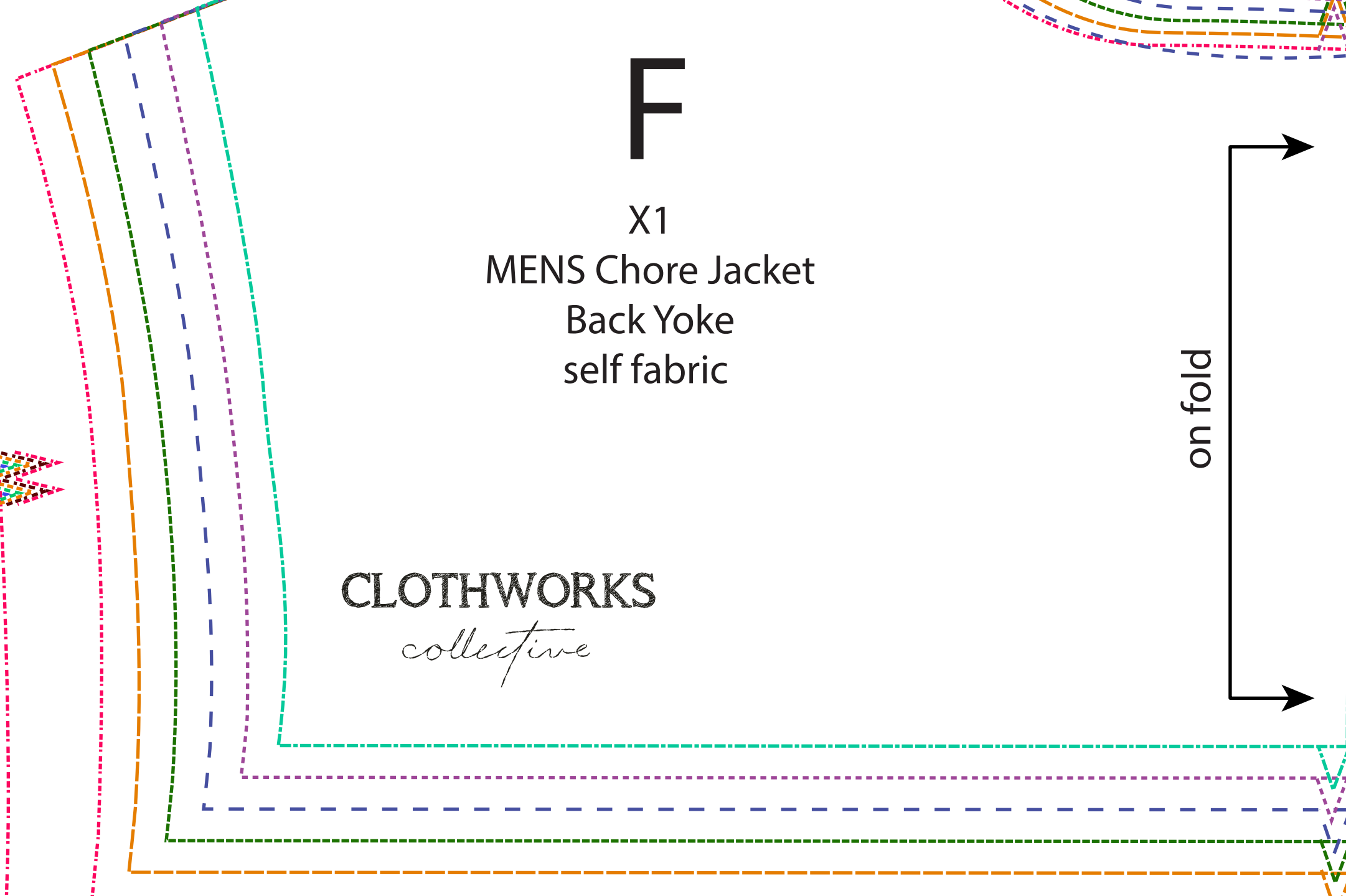
X2  
MENS Chore Jacket  
Front Body  
Self Fabric



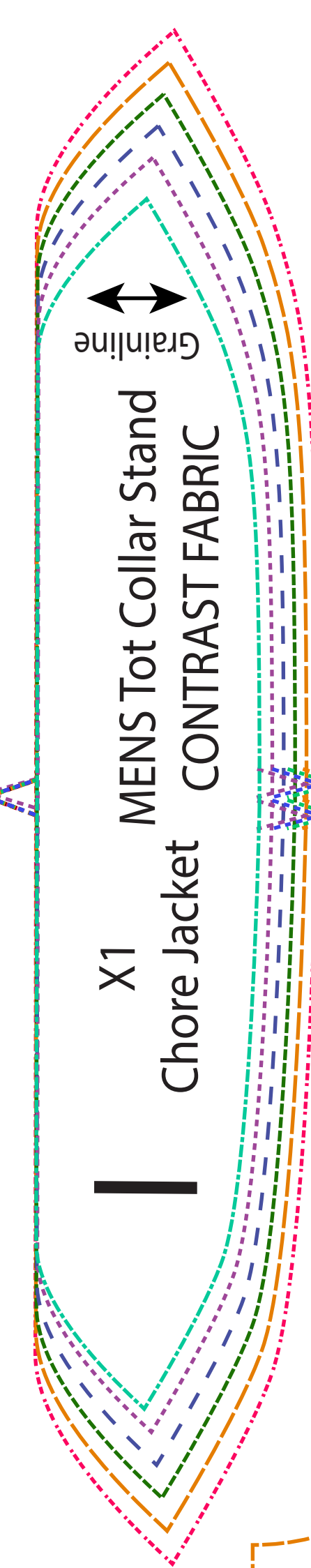
CLOTHWORKS  
*collective*

**F**

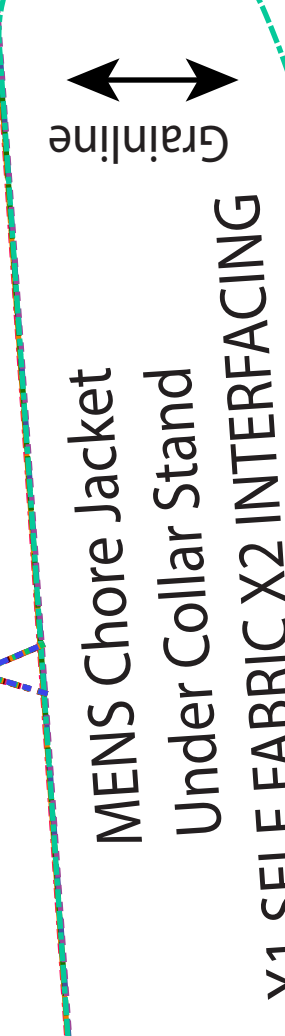
X1  
MENS Chore Jacket  
Back Yoke  
self fabric



CLOTHWORKS  
*collective*



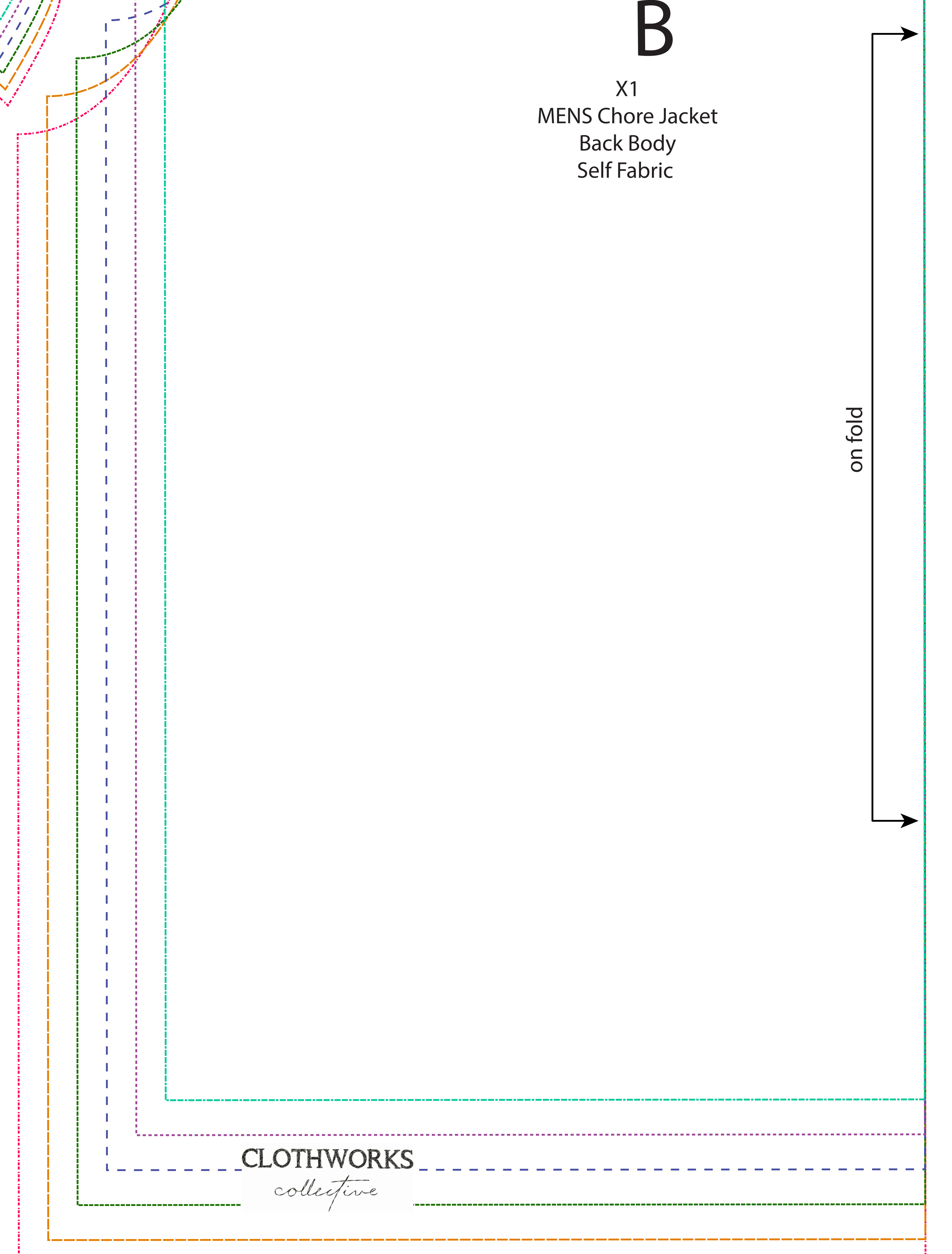
X1  
MENS Tot Collar Stand  
Chore Jacket  
CONTRAST FABRIC



MENS Chore Jacket  
Under Collar Stand  
X1 SELF FABRIC X2 INTERFACING

**B**

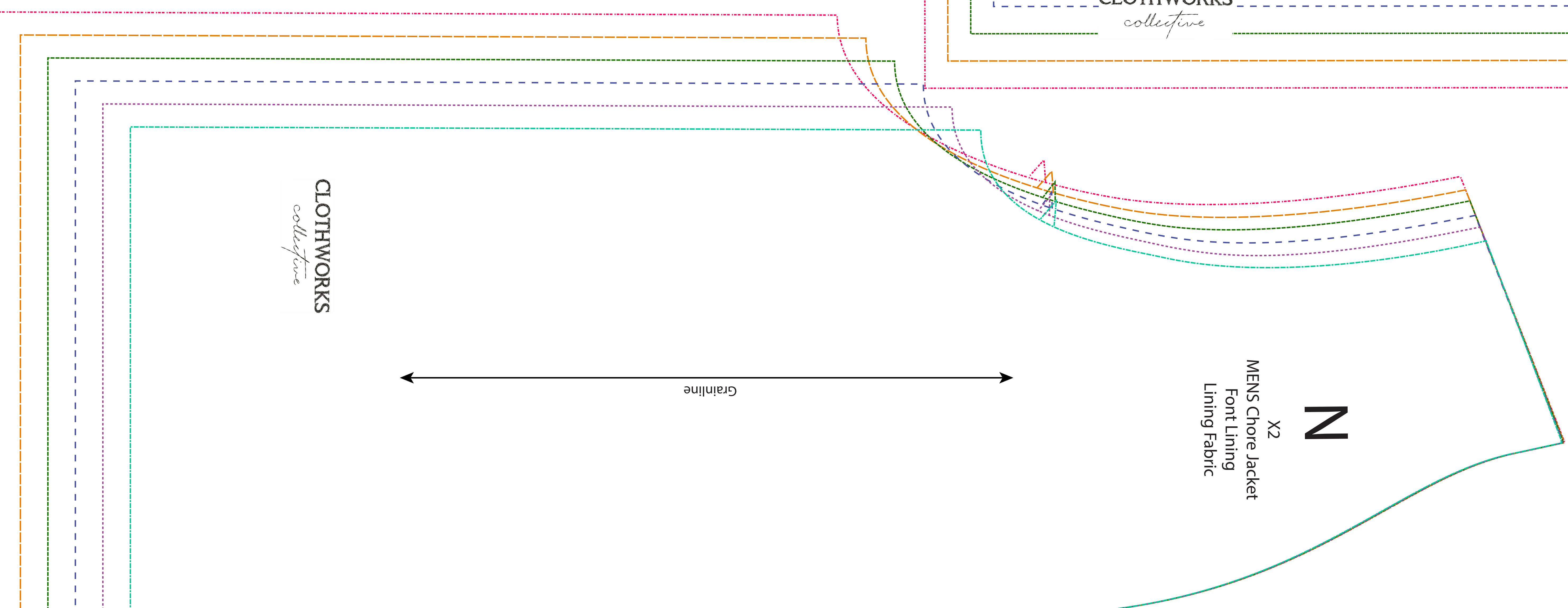
X1  
MENS Chore Jacket  
Back Body  
Self Fabric



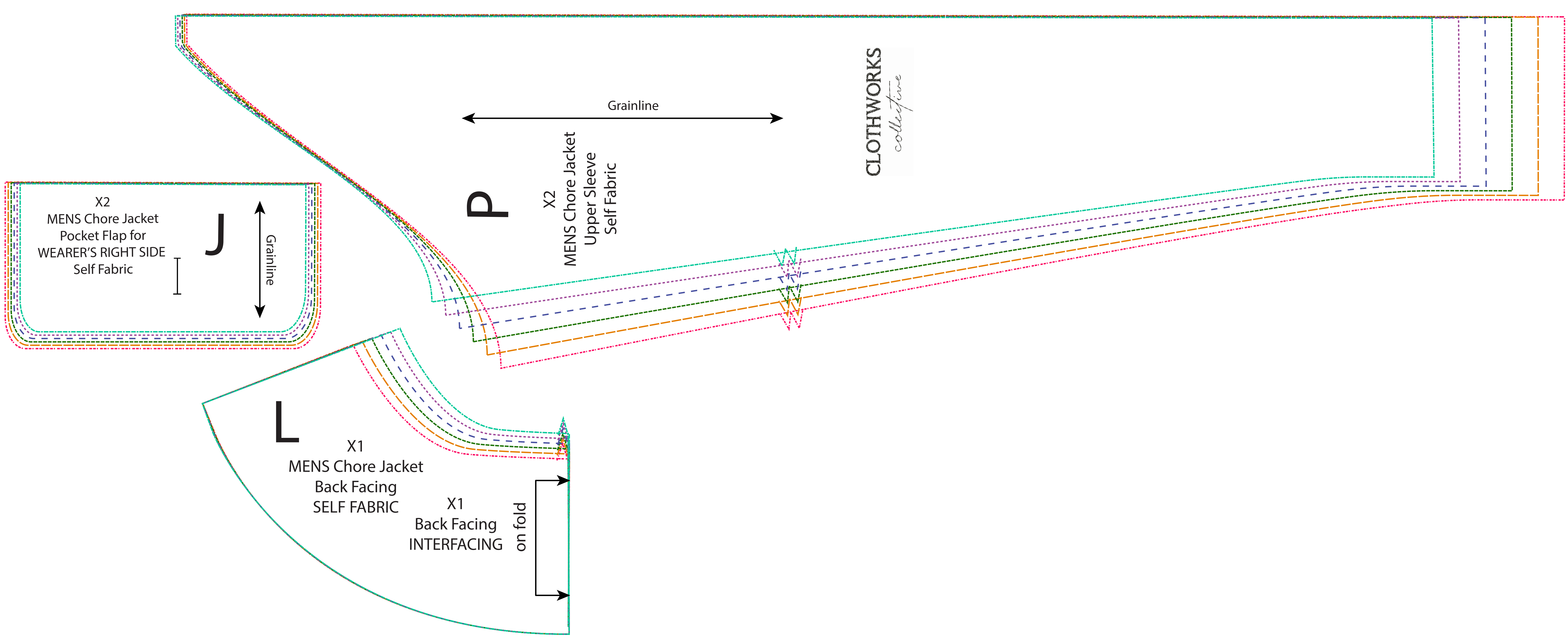
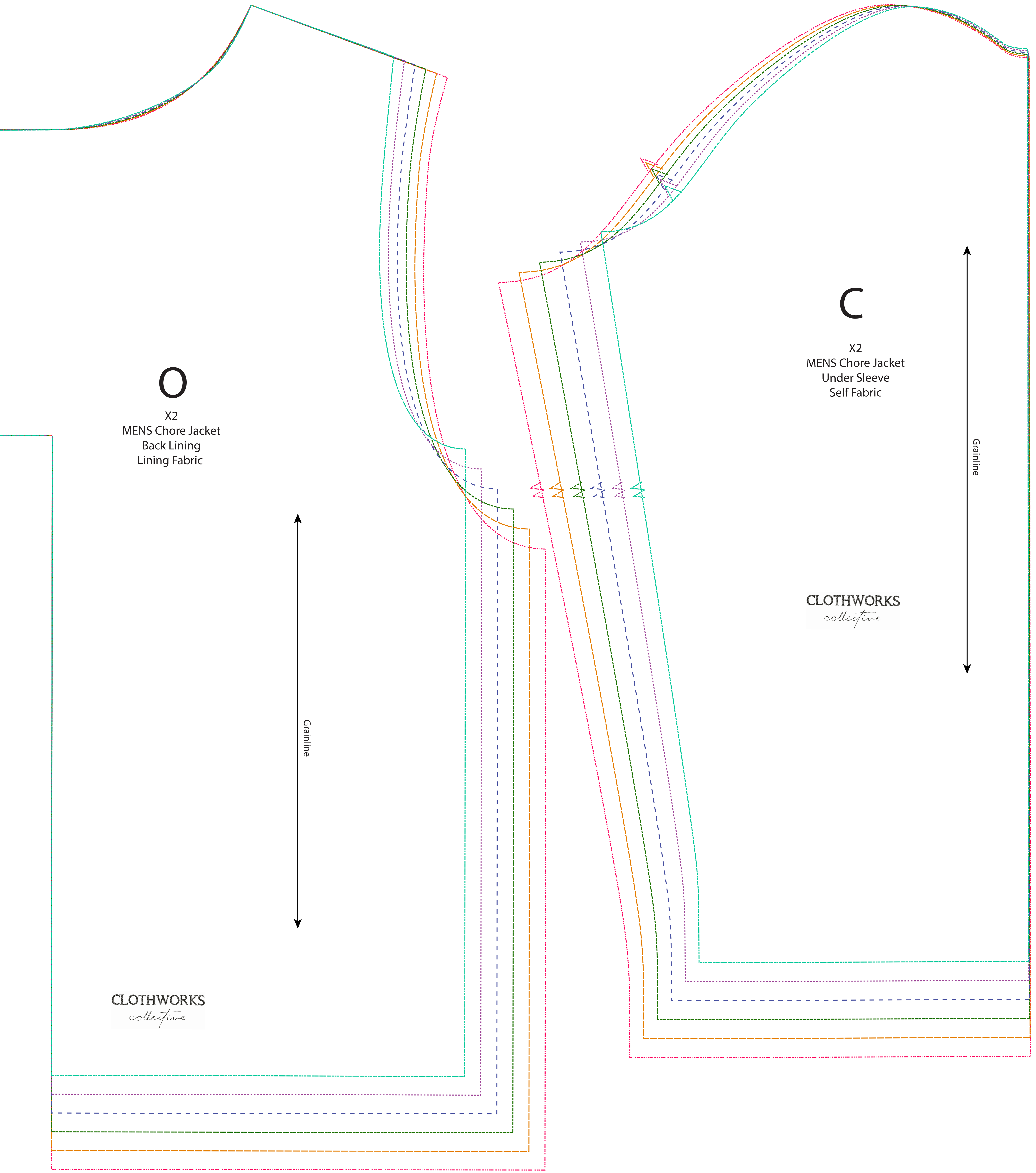
CLOTHWORKS  
*collective*

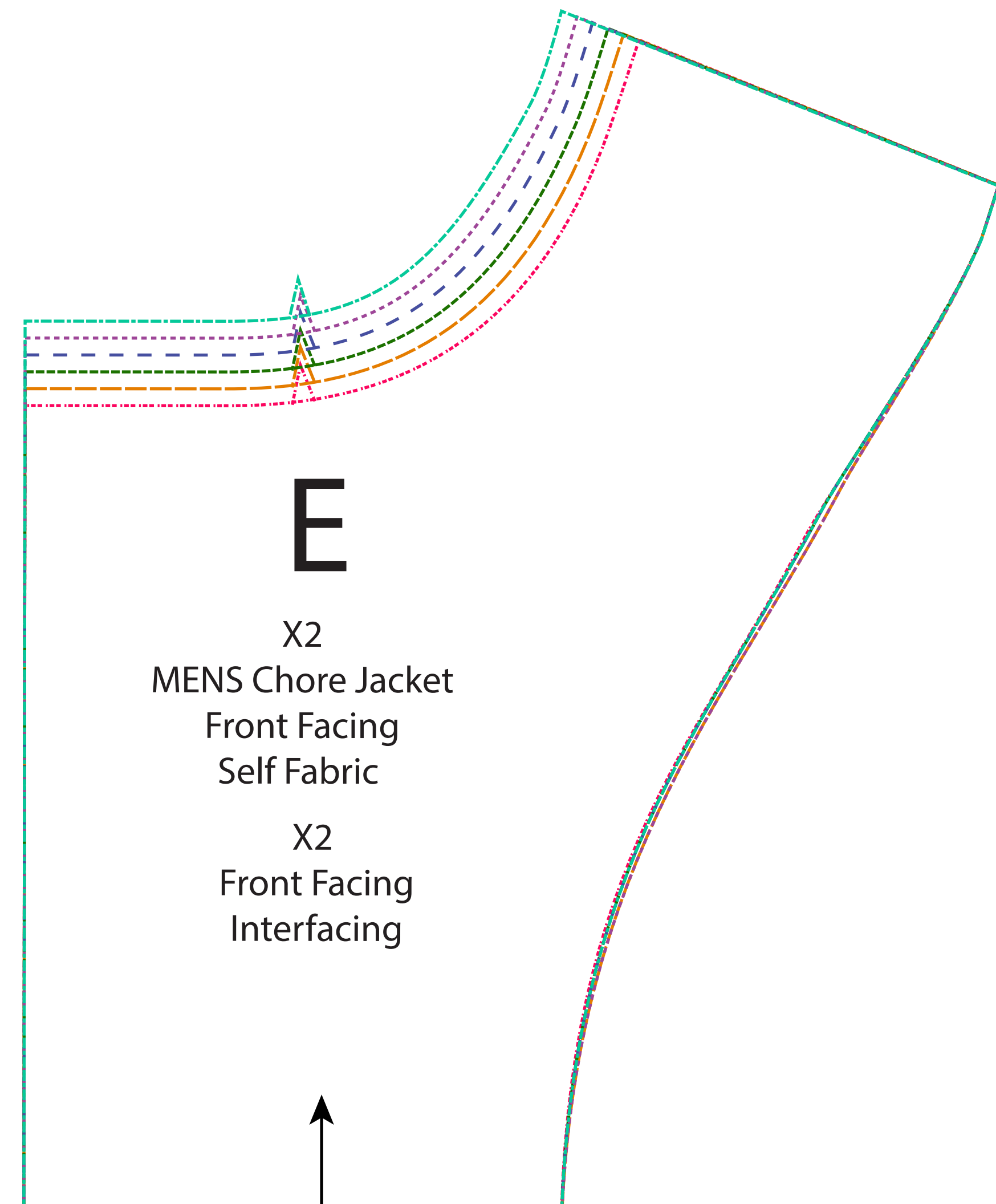
**N**

X2  
MENS Chore Jacket  
Font Lining  
Lining Fabric

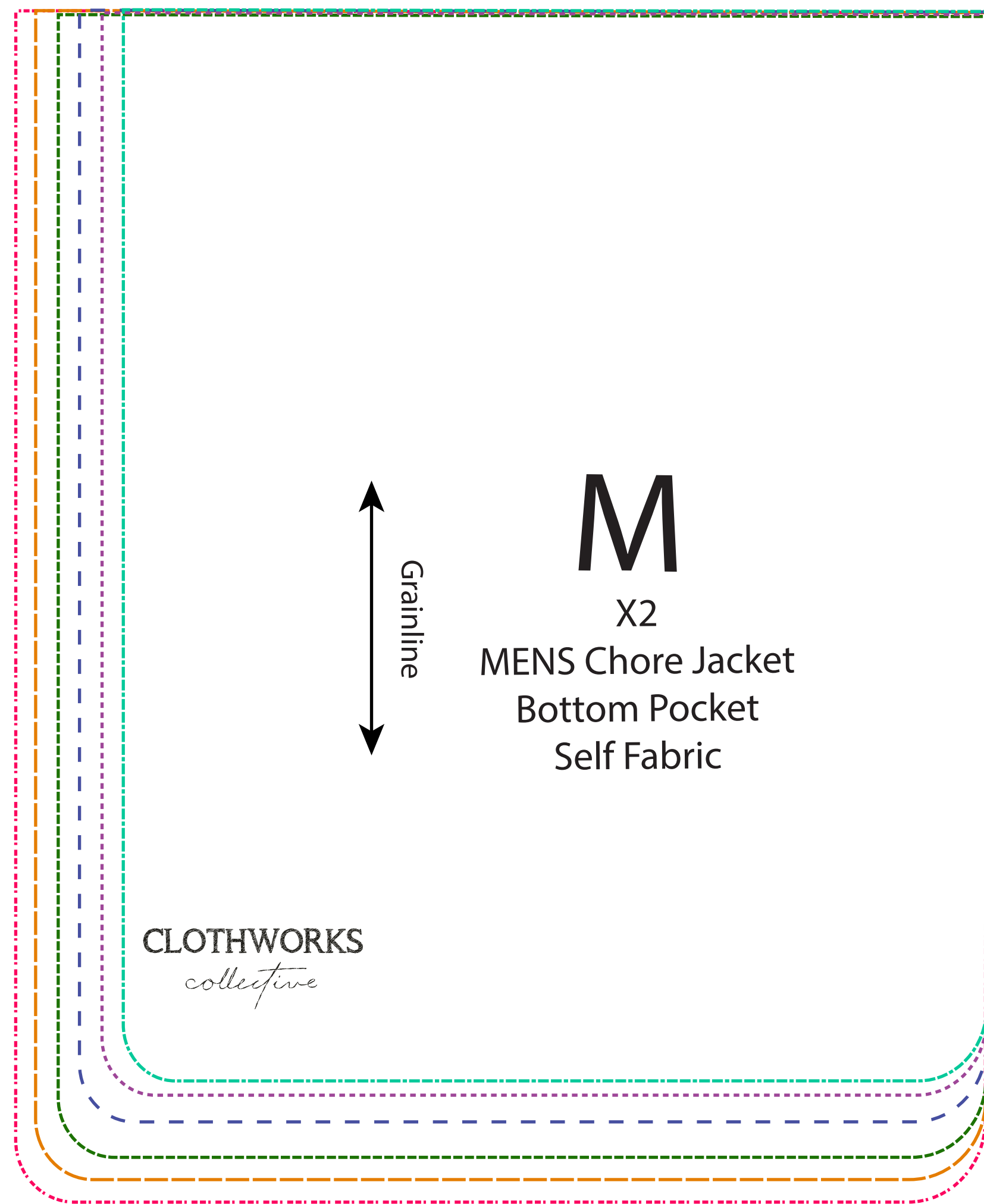


CLOTHWORKS  
*collective*

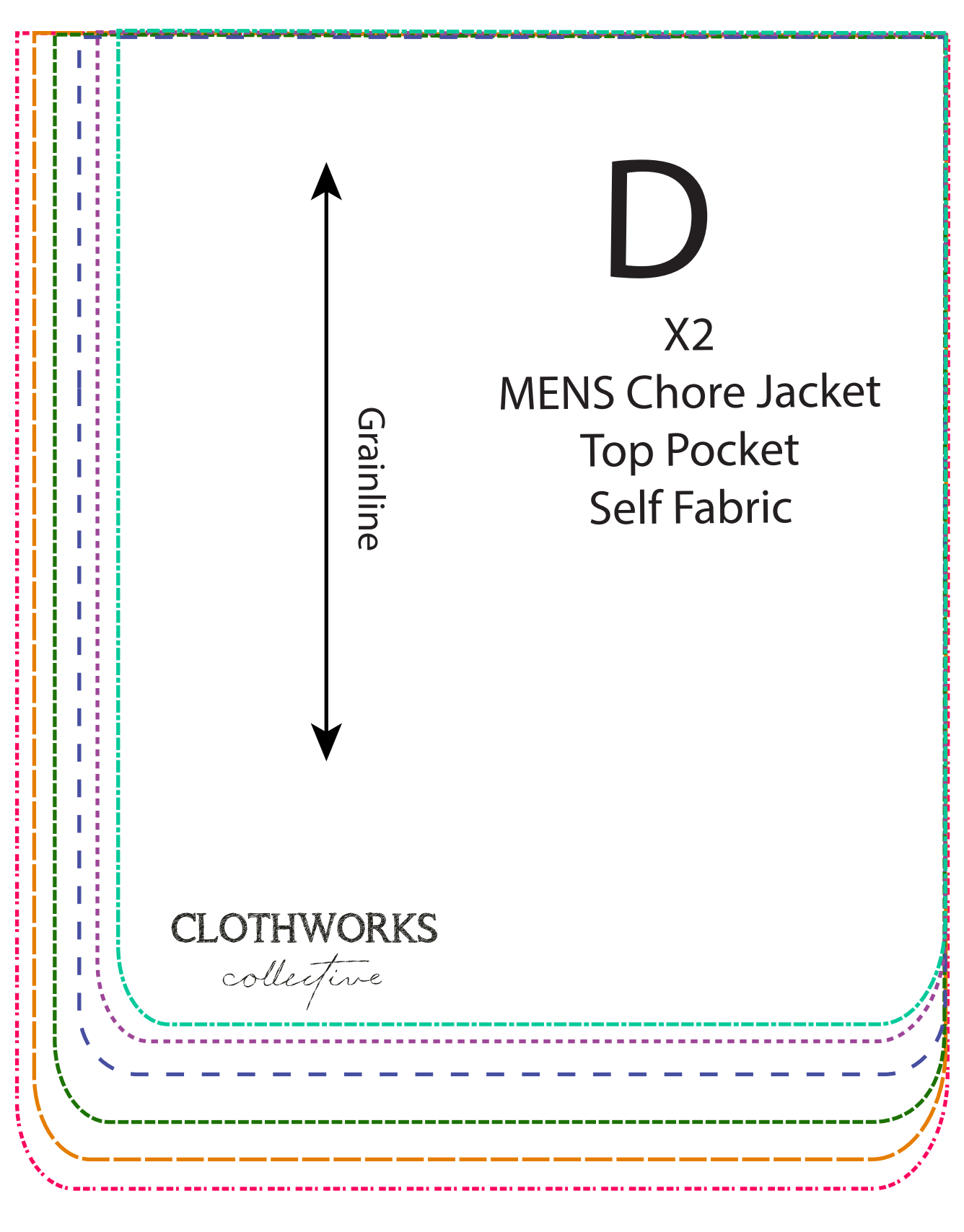




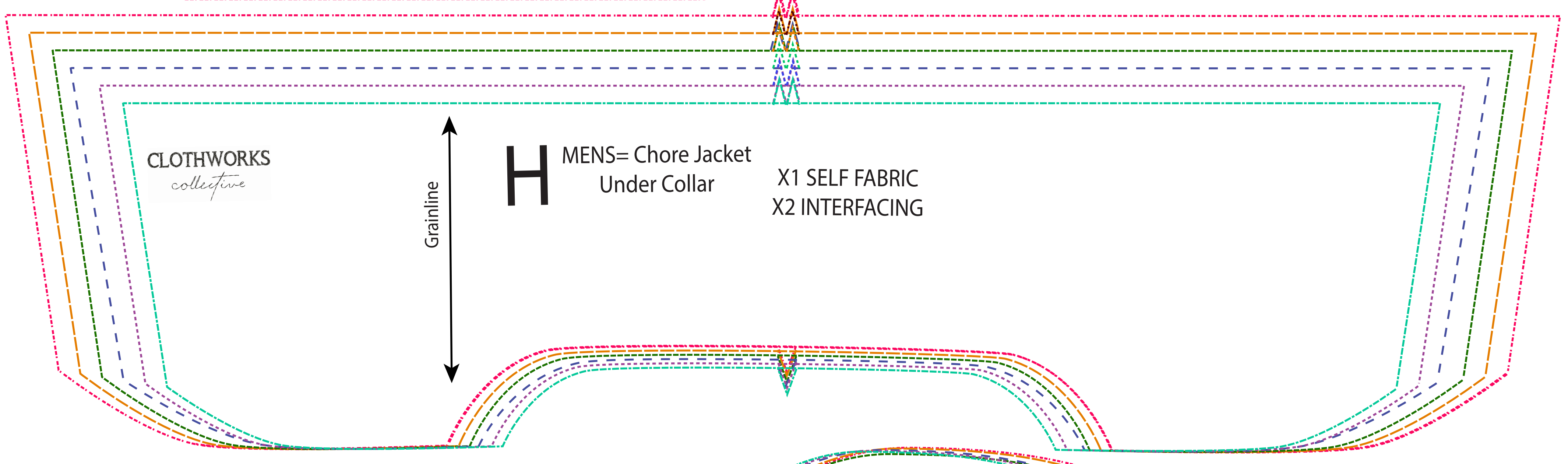
**E**  
X2  
MENS Chore Jacket  
Front Facing  
Self Fabric  
X2  
Front Facing  
Interfacing



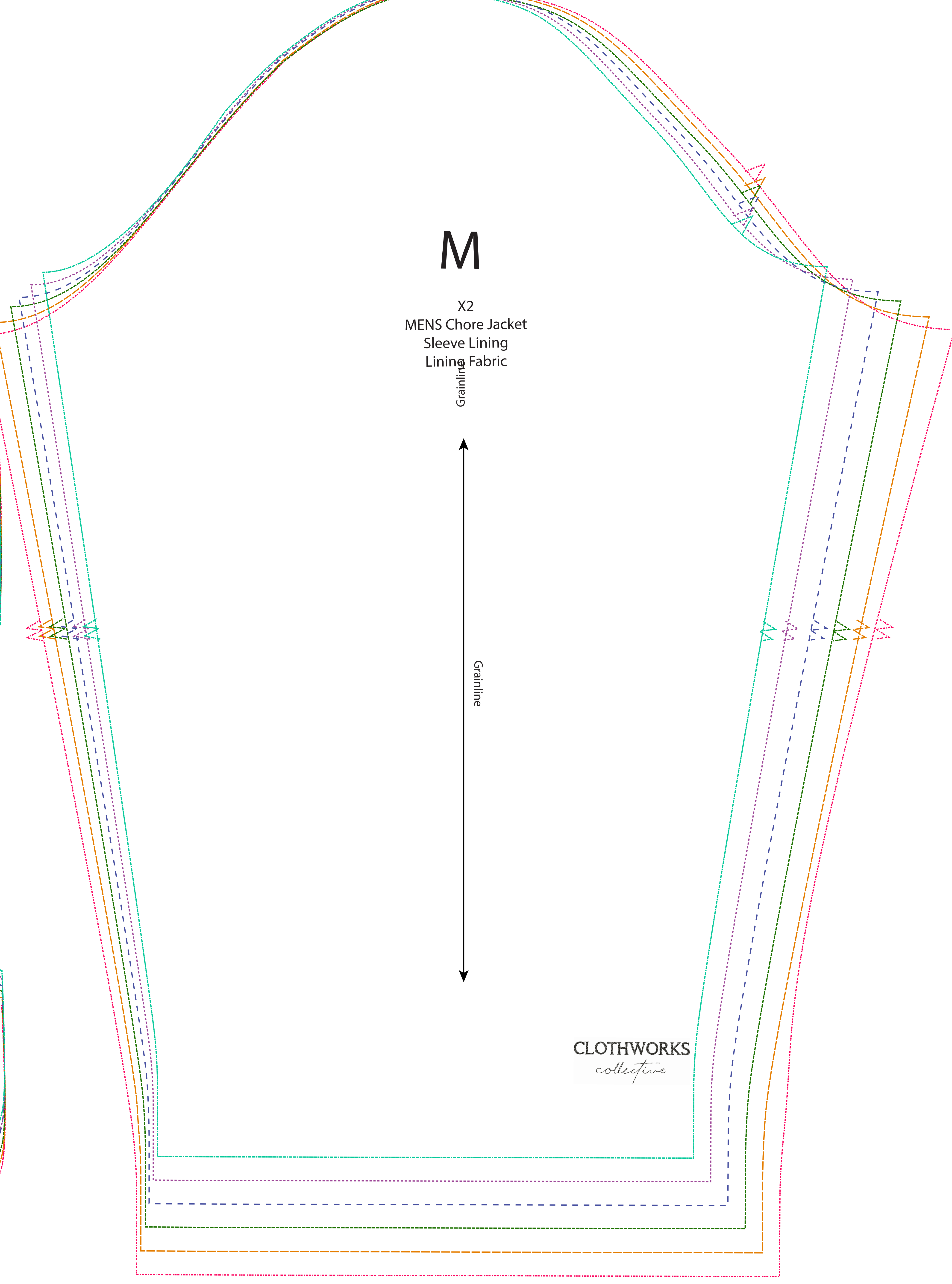
**M**  
X2  
MENS Chore Jacket  
Bottom Pocket  
Self Fabric



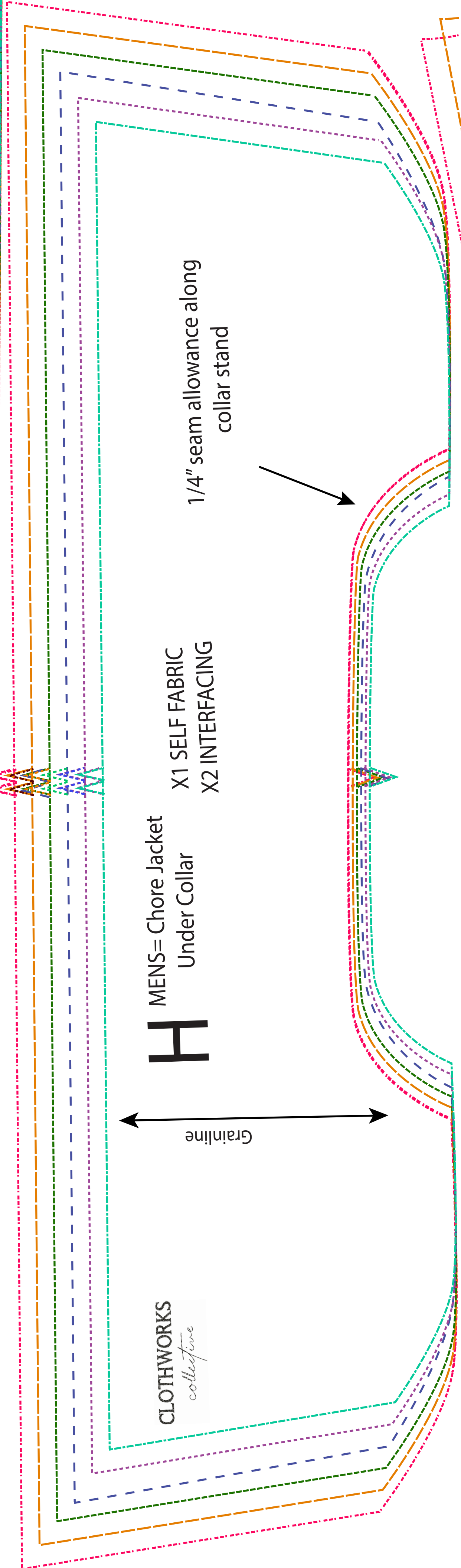
**D**  
X2  
MENS Chore Jacket  
Top Pocket  
Self Fabric



**H** MENS= Chore Jacket  
Under Collar  
X1 SELF FABRIC  
X2 INTERFACING



**M**  
X2  
MENS Chore Jacket  
Sleeve Lining  
Lining Fabric



**H** MENS= Chore Jacket  
Under Collar  
X1 SELF FABRIC  
X2 INTERFACING

1/4" seam allowance along  
collar stand

CLOTHWORKS  
*collective*

CLOTHWORKS  
*collective*

CLOTHWORKS  
*collective*