

CLOTHWORKS

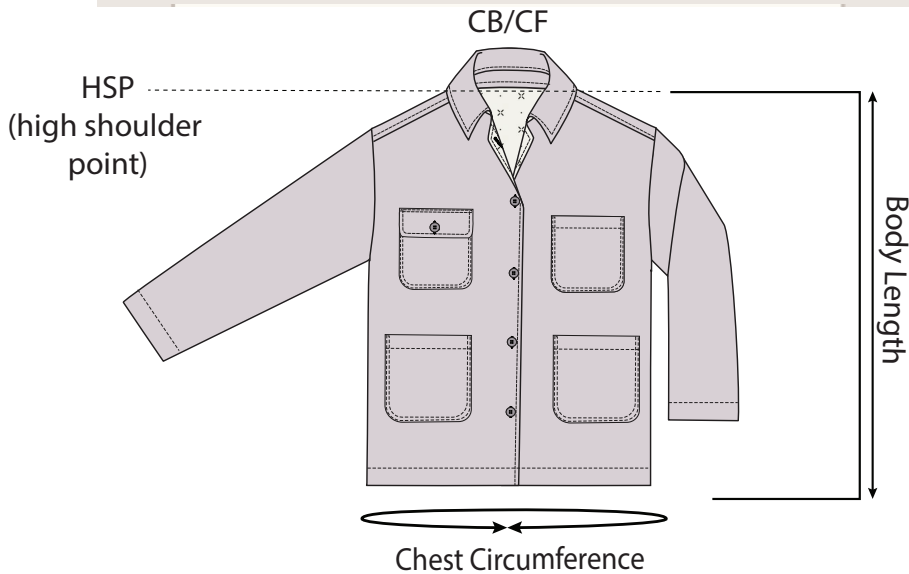
collective

MEN'S CHORE JACKET INSTRUCTIONS

FINISHED GARMENT MEASUREMENTS

• SIZE CHART •

SIZE	CHEST CIRC.	LENGTH
XS	45" / 114 cm	27.5" / 70 cm
S	47" / 119 cm	28" / 71 cm
M	49" / 125 cm	28.5" / 72 cm
L	51" / 130 cm	29" / 74 cm
XL	53" / 135cm	29.5" / 75 cm
XXL	55" / 140 cm	30" / 76 cm



*It is helpful to have a tailors' clapper with a point presser.



• MATERIALS LIST •

SELF (MAIN) FABRIC

Cotton Twill, Cotton Canvas, Waxed Cotton, Denim, Corduroy, Wool or Wool Blend Coating

Self (Outer)

Size	Yards	Meters
XS	2.25 yd	2 m
S	2.5 yd	2.25 m
M	3 yd	2.75 m
L	3.25 yd	3 m
XL	3.5 yd	3.25 m
XXL	3.75 yd	3.5 m

CONTRAST (COLLAR) FABRIC

Corduroy is the classic contrast fabric for a Chore Jacket, but you can also use Cotton Twill, Cotton Canvas, Waxed Cotton, Wool or Wool Blend Coating

Contrast

Size	Yards	Meters
XS	0.25 yd	0.25 m
S	0.5 yd	0.5 m
M	0.5 yd	0.5 m
L	0.5 yd	0.5 m
XL	0.75 yd	0.75 m
XXL	0.75 yd	0.75 m

LINING FABRIC

Lightweight woven, quilter's cotton, light weight quilting, acetate lining, Bamburg lining

Lining

Size	Yards	Meters
XS	2 yd	2 m
S	2.25 yd	2.25 m
M	2.75 yd	2.50 m
L	3 yd	2.75 m
XL	3.25 yd	3 m
XXL	3.5 yd	3.25 m

TRIMS

- Lightweight woven interfacing
- 5 x 3/4" buttons
- 1 x 1/2" button
- matching thread for all fabrics

INTERFACING

Size	Yards	Meters
XS	1.5 yd	1.25 m
S	1.5 yd	1.5 m
M	1.75 yd	1.5 m
L	1.75 yd	1.5 m
XL	1.75 yd	1.5 m
XXL	2 yd	1.75 m

PRINTING/CUTTING INSTRUCTIONS

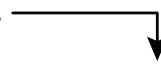
Choose which size paper you would like to use and if you will be printing just one size of pattern pieces. If so, you can select just the layer of the PDF that corresponds with that size.

If you are using the A4 Letter size, print the 1st page of the document called "PATTERN" making sure to select DO NOT SCALE when printing.

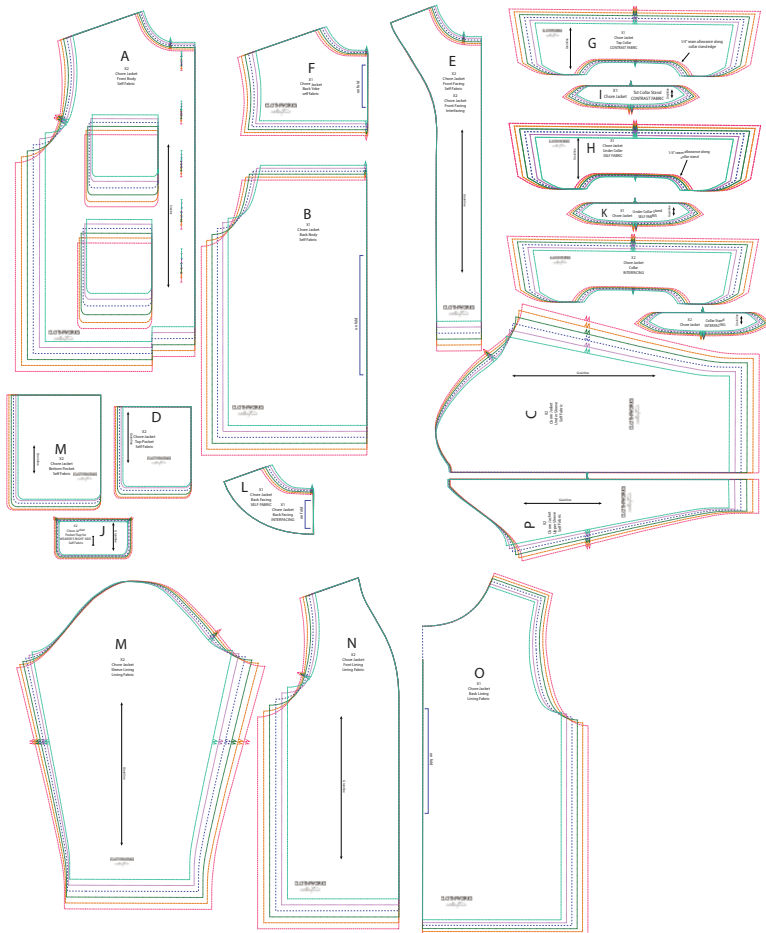
Check that the box at the top left corner is exactly 1" x 1". If it is not, check your printer settings and try again.

Print all pages of the "PATTERN" document and cut off the border at the black outer line of each page.

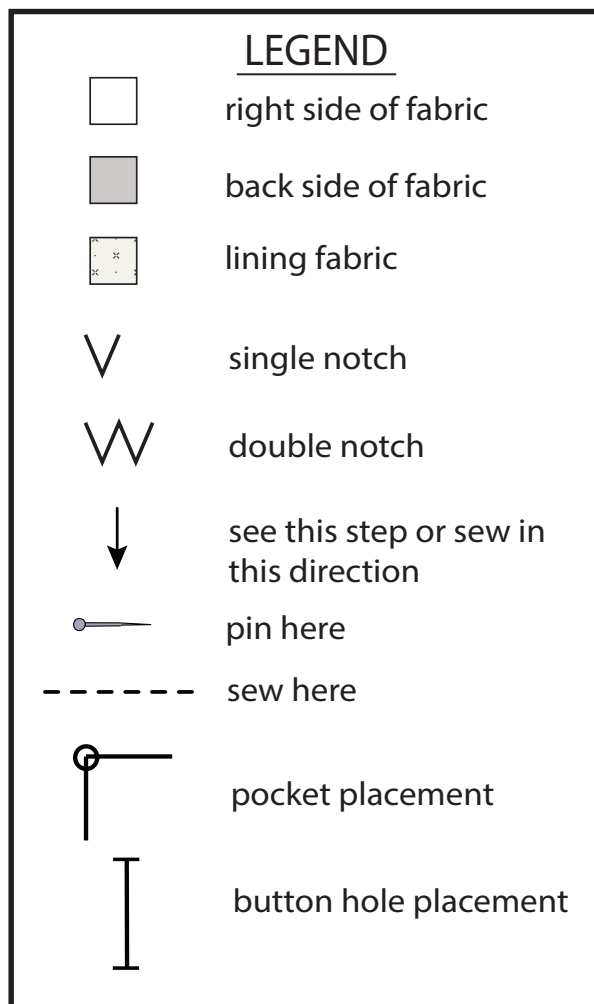
Arrange the pages in this order, and tape them together.



These are all the pattern pieces you need:



1a	1b	1c	1d	1e	1f
2a	2b	2c	2d	2e	2f
3a	3b	3c	3d	3e	3f
4a	4b	4c	4d	4e	4f
5a	5b	5c	5d	5e	5f
6a	6b	6c	6d	6e	6f
7a	7b	7c	7d	7e	7f
8a	8b	8c	8d	8e	8f
9a	9b	9c	9d	9e	9f
10a	10b	10c	10d	10e	10f



SEWING BASICS

All seams to be sewn with 2-3 stitches of backstitch on either end.

For fabric that frays, serge or zigzag along all raw edges BEFORE sewing.

Clip all corners to allow for easy movement of fabric, leaving 1/8" left un-clipped before the seam.



FUSING INSTRUCTIONS



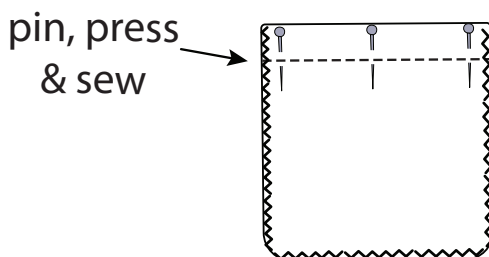
1. Fuse pieces E, G, H, I, J, K, L before sewing, and before zig zagging/serging edges of all pieces.
2. Cut 1 1/4" strips of fusing long enough to use at the bottom of the sleeve openings and bottom edge of jacket. They will go at the straight bottom edges of the wrong side of pattern pieces Front (A) , Back (B) and both parts of the self Sleeve (C and P).

SEWING INSTRUCTIONS

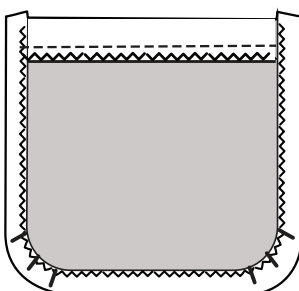
BEFORE STARTING TEST THE HEAT SETTINGS OF YOUR IRON ON AN EXTRA PIECE OF YOUR MAIN FABRIC AND YOUR LINING FABRIC

SERGE OR ZIG ZAG AROUND ALL PIECE EDGES BEFORE STARTING TO SEW.

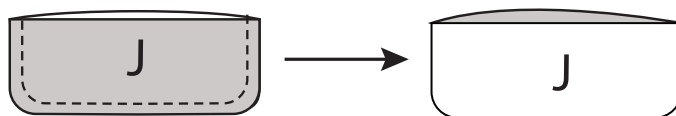
1. Fold top edge of pockets down by 1 1/4", folding towards the wrong side of fabric. Pin, press and sew at 1" below top edge.



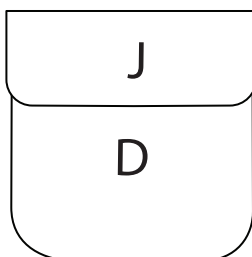
2. Fold and press the remaining 3 edges 1/2" towards the back side. Clip in corners to allow it to fold nicely.



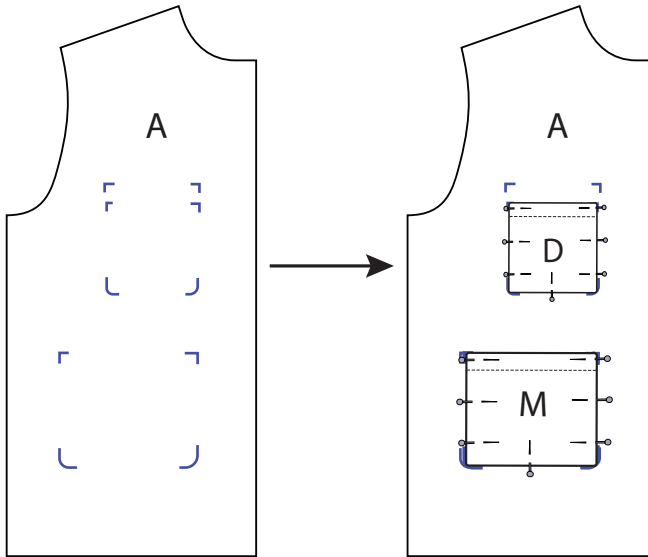
3. Place one pocket flap pattern piece J on top of another, with right sides together. Pin along the three bottom edges as seen below. Sew at 1/2" from the three bottom sides and trim seam allowance to 1/4". Fold right side out and press.



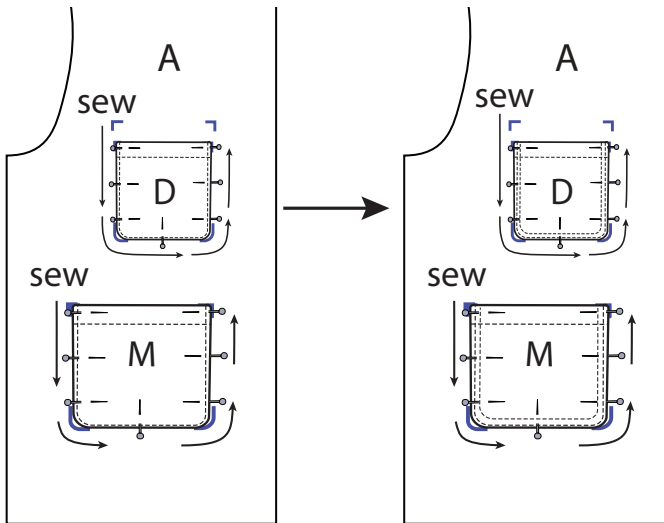
4. Place the pocket flap J on top of the pocket D to make sure pocket flap J is the same width or a little wider. If they are not, adjust the seam allowance of the pocket flap so that they match.



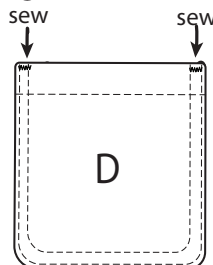
4. Take the front A paper pattern piece and place it on the front A fabric pieces. With a washable marker, mark the corner edges of all pockets and pocket flaps. Place the pockets within the marked corners. Pin in place. Repeat for all four pockets.



5. Sew the pocket from the top left corner to the bottom, to the top right corner as close to the edge of the pocket as possible. Sew a second line of stitching at 1/4" in from the first one, following the below path. Repeat on all pockets.



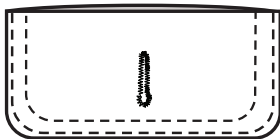
6. Reinforce the top corners of the pocket D with a 1/4" long bar tack made by sewing a zig zag line with the zig zag stitching at the smallest size it can be.



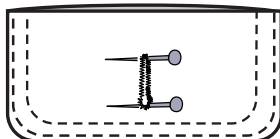
7. Pin and sew the pocket flaps (J) as close to the folded edge as possible. Sew another line of stitching $\frac{1}{4}$ " in from the first line.



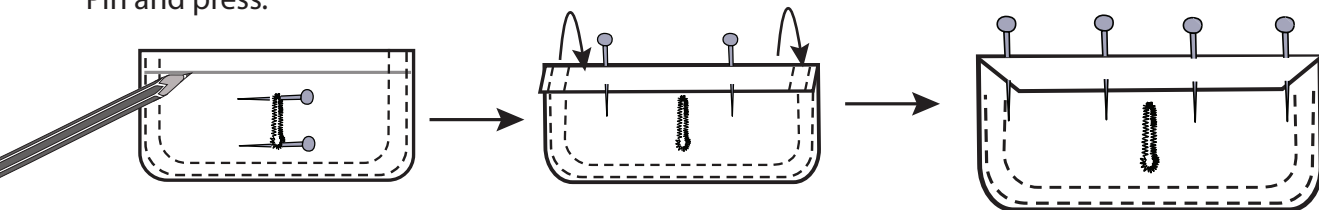
8. Do a test button hole to make sure it is the right size for your button. Check that the button fits through the button hole snugly. Refer to the paper pattern piece J and mark the button hole placement on the pocket flap. Sew the button hole.



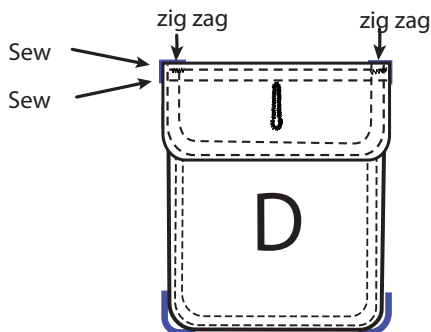
9. Place a pin on both ends of the button hole and cut between pins. This prevents cutting too far and ruining the button hole and pocket flap.



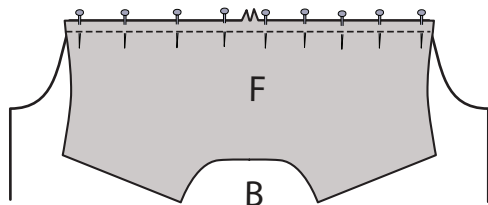
10. With a washable pen, mark $\frac{3}{8}$ " down from the top the pocket flap. Flip over and fold both layer of the pocket flap towards the back along the line. Pin and press in place. Fold the top two corners under the folded seam allowance on a 45° angle towards the top. Pin and press.



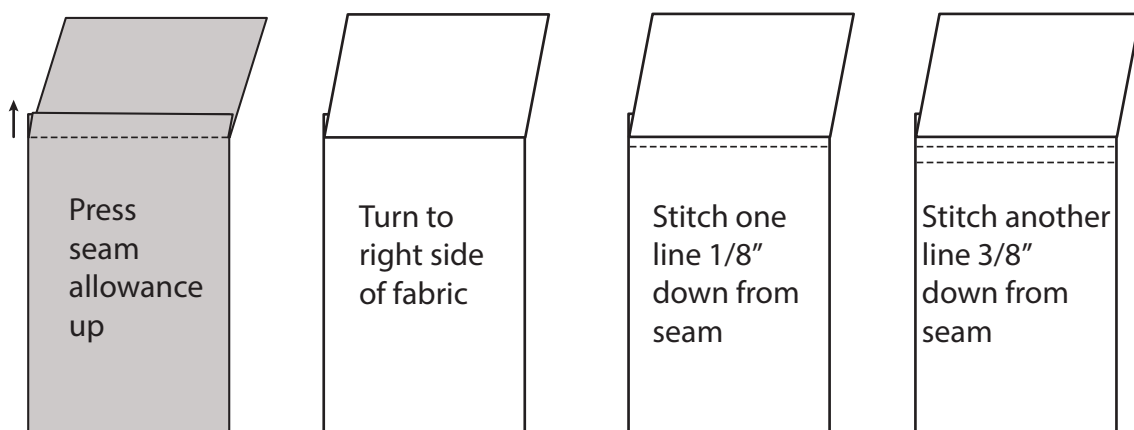
11. Place the top edge of pocket flap (J) $\frac{1}{2}$ " above the top edge of pocket D, on wearer's right side. Sew along the top of the pocket flap as close to the top edge as possible. Sew another line of stitching $\frac{1}{4}$ " down from the first line. Reinforce the top corners of the pocket D with a $\frac{1}{4}$ " long bar tack made by sewing a zig zag line with the zig zag stitching at the smallest size it can be.



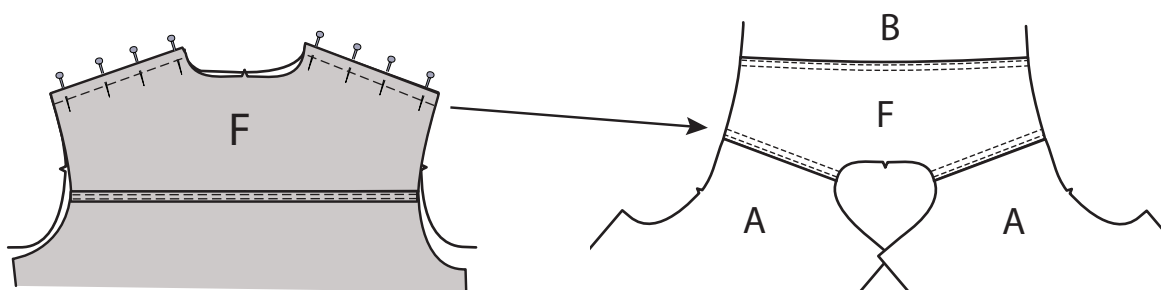
12. With right sides together, align Back Body Yoke (F) to Back Bottom Body (B) at the horizontal seam. Match double notches. Stitch $\frac{1}{2}$ " seam allowance.



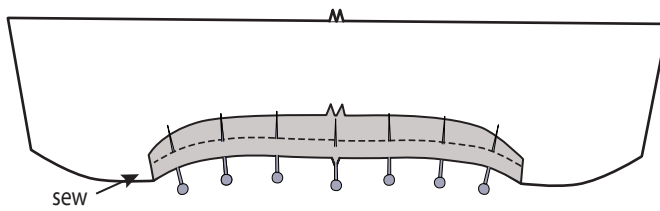
13. Press seam allowance toward Back Body Yoke (F). Topstitch $\frac{1}{8}$ " and $\frac{3}{8}$ " from seam, catching seam allowances underneath. See the four steps for top stitching below. These are the same four steps for all top stitching for this garment.



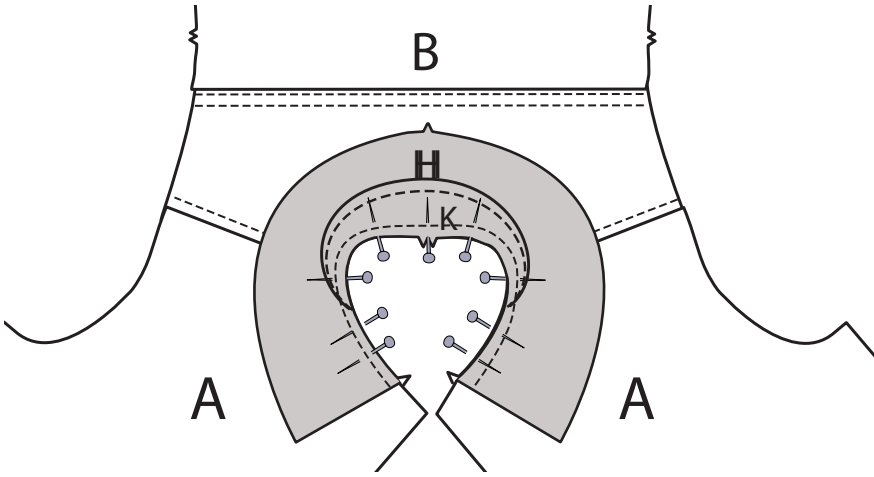
14. Use the same method to attach Front Body (A) to Back Body Yoke (F) at the shoulder seams. Stitch $\frac{1}{2}$ ", press seam allowances toward yoke, then topstitch $\frac{1}{8}$ " and $\frac{3}{8}$ " from the seam.



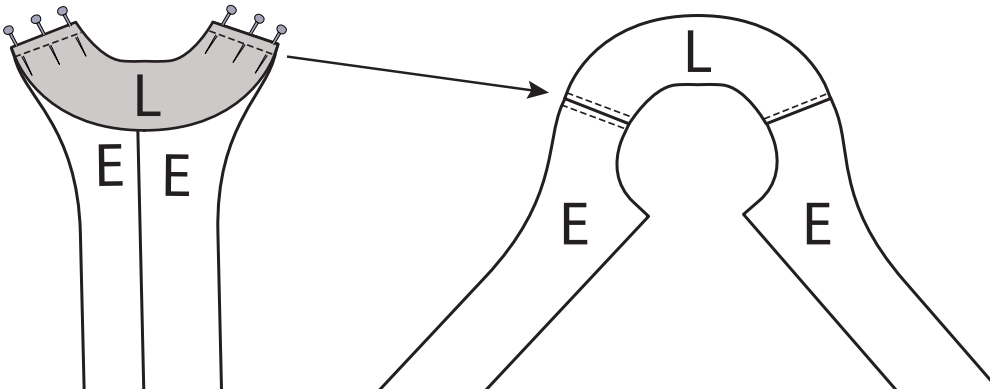
15. With right sides together, place Top Collar (G) on top of Top Collar Stand (I) along the stand edge with single notches matching. Stitch at $\frac{1}{4}$ " seam allowance. Repeat for Under Collar (H) and Under Collar Stand (K). Clip the collar's seam allowance. Press seam allowance open. Edge stitch at $\frac{1}{16}$ " above the seam to secure the collar's seam allowance to the collar. Repeat at $\frac{1}{16}$ " below the seam for the collar stand's seam allowance.



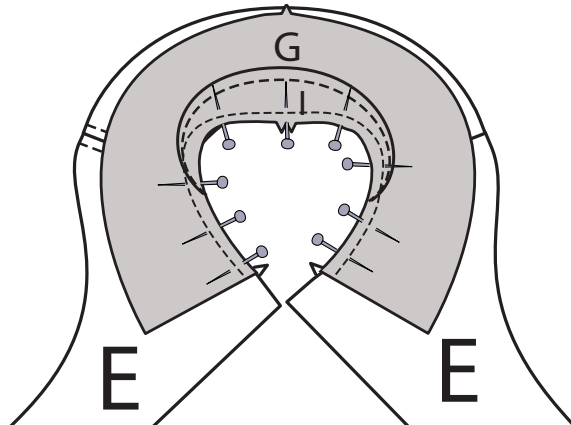
16. With right sides together, pin Under Collar Stand (K) with Under Collar (H) to jacket neckline. Match double notches at center back neckline with double notches at jacket back neckline. The single notch marks the start of the collar. Stitch neckline at $\frac{1}{2}$ ". Press seam allowance open.



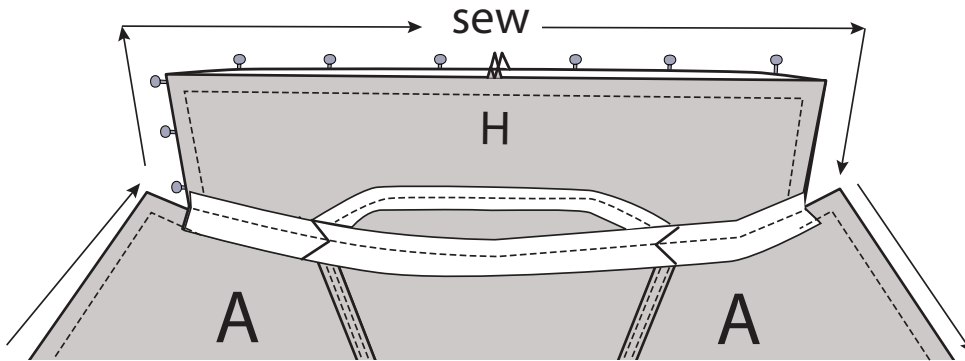
17. With right sides together, align Front Facing (E) to Back Facing (L) at shoulder seams. Stitch $\frac{1}{2}$ ". Press open. Topstitch $\frac{1}{4}$ " each side of seam.



18. With right sides together, align Top Collar Stand (I) and Top Collar (G) to neckline edge of facings. Match double notches at center back neckline with facings double notches. Stitch at $\frac{1}{2}$ " from edge. Press seam allowance open.



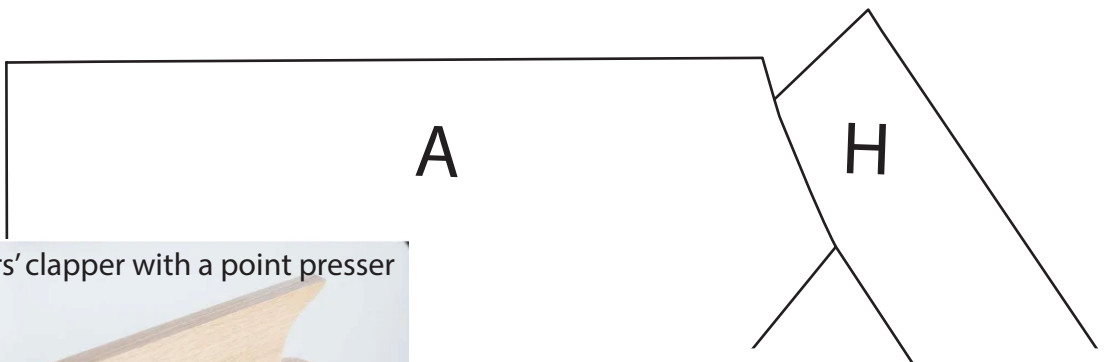
19. With right sides together, match Top Collar (G) to Under Collar (H) along the outer edges. Match double notches at the collar outer edge. Stitch at $\frac{1}{2}$ " seam allowance along sides and outer edge. Move seam allowance at neckline out of the way when sewing and back stitch on either side of the neckline seam so you do not sew through the seam allowance. Continue to sew along the rest of the neckline and down the centre front. I recommend watching a video (of a different coat, but the same steps) at: <https://youtu.be/uWZgwCZbeAY?t=1388>



20. Trim seam allowances to $\frac{1}{4}$ ". Clip collar point at a diagonal.



22. Turn right side out, making sure to pull out full point of collar and centre front corners and press diligently with a tailors' clapper with a point presser if you have one. Either way, make sure the edge and corners are perfectly pressed but not over-pressed.



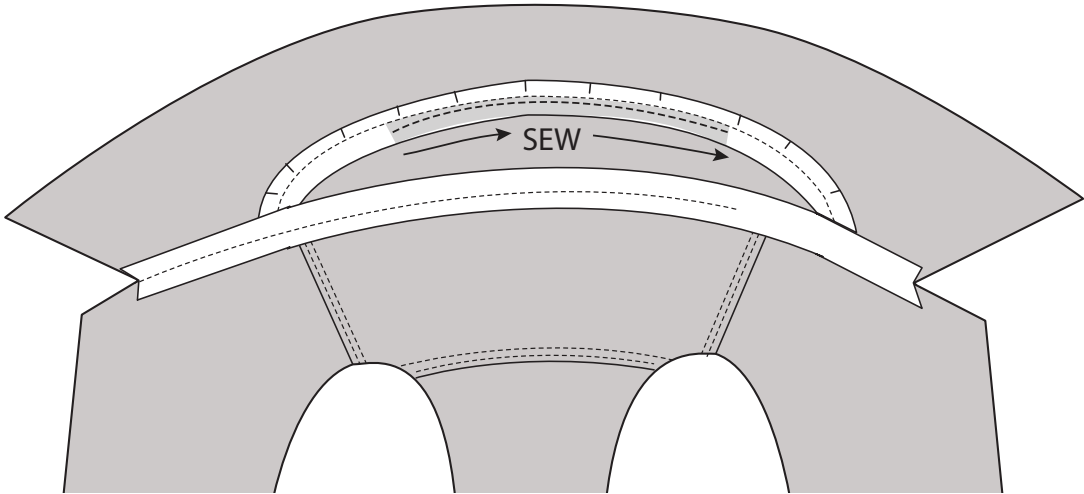
tailors' clapper with a point presser



23. This step is joining the collar stand seam allowances so that they stay together when the collar is folded over at the neck when worn. Read this whole set of instructions for #23 before starting.

With the garment right-side-out, and keeping the seam allowances open as pressed, pin together the Upper Collar Stand and Under Collar Stand seam allowances. Make sure the seams are perfectly aligned one on top of the other. Stitch through the collar stand seam allowances next to the seam for a portion at the centre back. See below in grey for the area that needs to be sewn together.

INSIDE VIEW

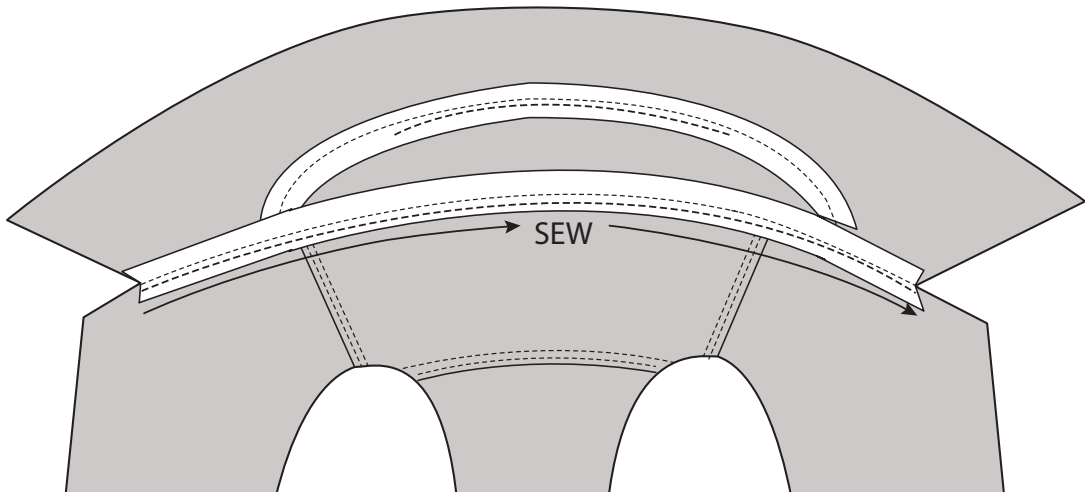


24. Repeat this step for the neckline seam of the collars. Connect the facing seam allowance to the body seam allowance at the neckline seam. Sew them together just below the seam going along the whole length of the collar.

If you would like to see this step (on a different coat) go to:

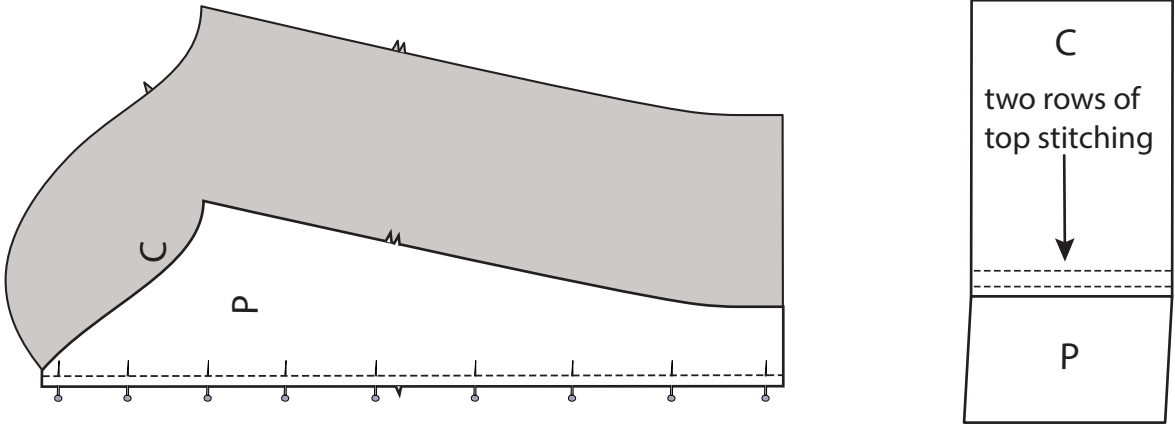
<https://youtu.be/uWZgwCZbeAY?t=1601>

INSIDE VIEW

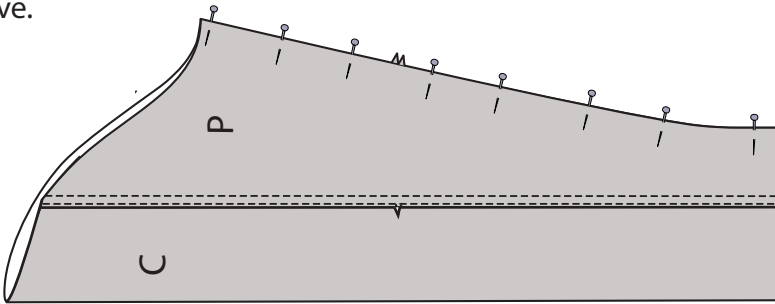


25. Press the collar and collar stand one more time to ensure they are flat.

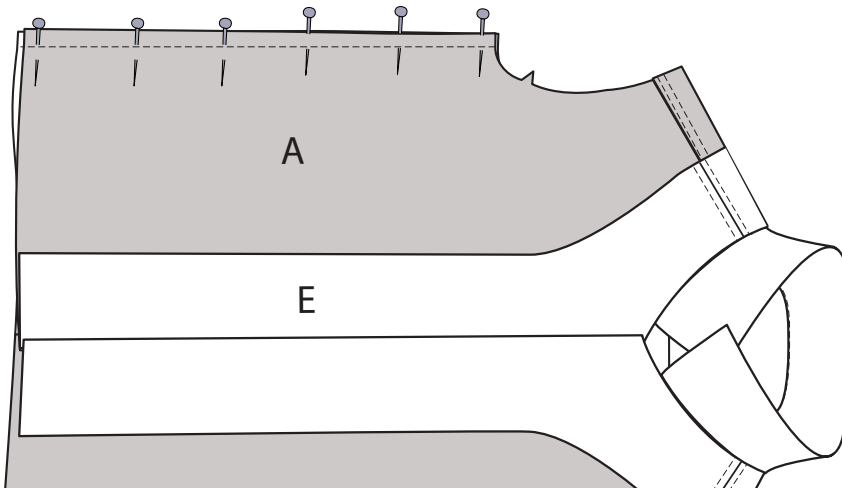
26. With right sides together, align Upper Sleeve (C) to Under Sleeve (P) along long edge. Match single notches. Stitch $\frac{1}{2}$ " from edge. Press seam allowance toward upper sleeve and top stitch following step 14.



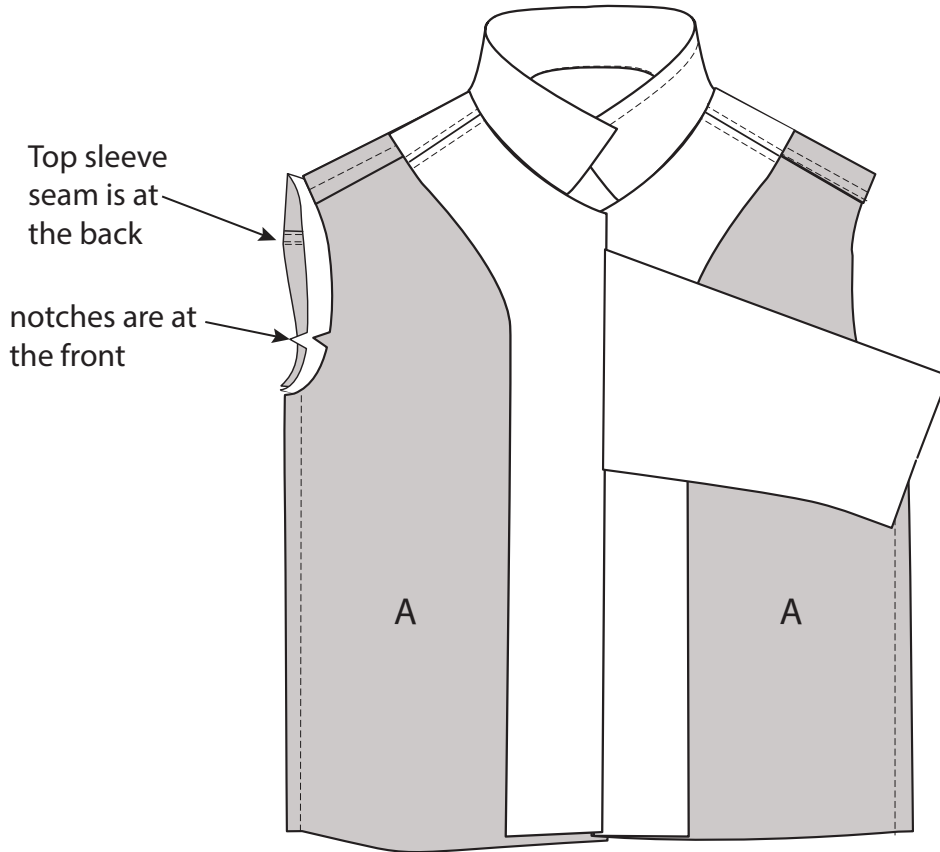
27. With right sides together, align upper sleeve to under sleeve along remaining long edge. Match double notches. Stitch $\frac{1}{2}$ ". Press seam allowances open. (No topstitching.) Repeat for second sleeve.



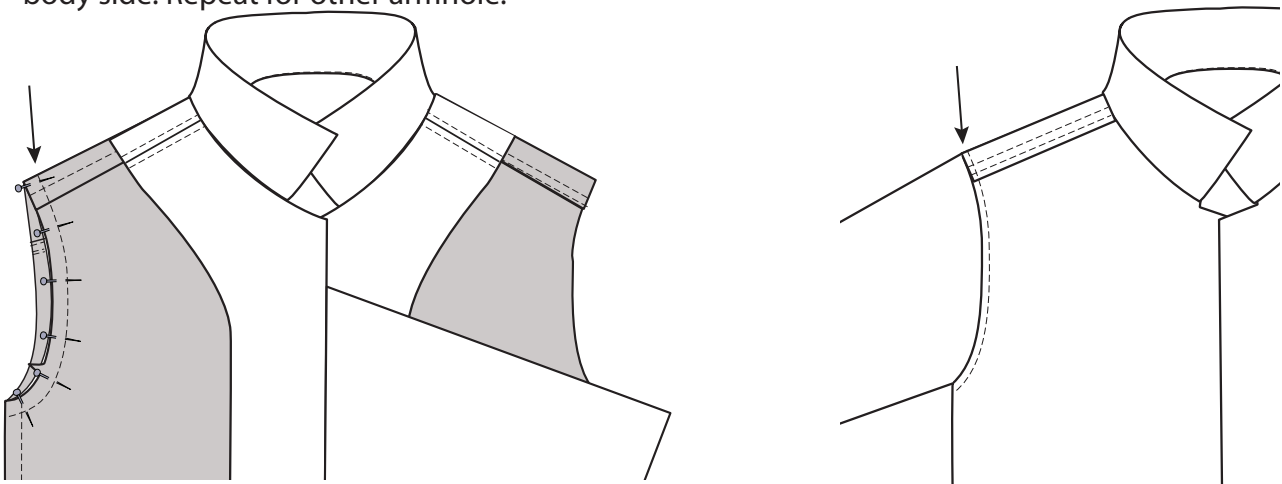
28. With right sides together pin the side seams of the front (A) to the Back Yoke (F)/Back (B). If there is a slight different in length between the front and back side seams, match the bottom of the armholes together and let the hem be uneven.



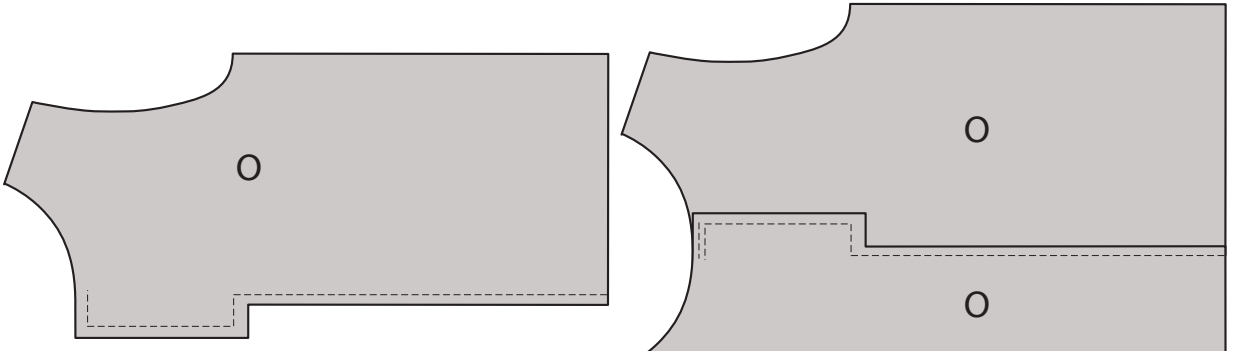
29. With body wrong side out and sleeve right side out, insert sleeves into body. Match sleeve underarm seam to body side seam. Match front sleeve notch to front armhole notch. The back yoke seam does not match the back sleeve seam. (There would be too much bulk to sew through if they met at the armhole seam).



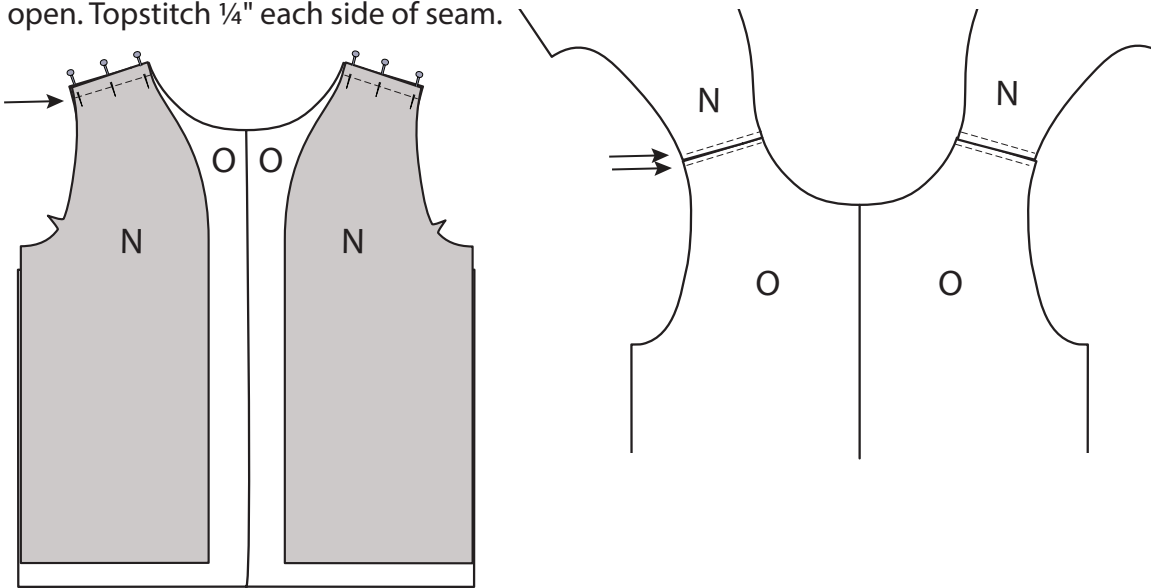
30. Pin and sew at $\frac{1}{2}$ " from the edge. Press seam allowance towards the body. Trim seam allowance to $\frac{1}{4}$ " wide. Top Stitch through seam allowance at $\frac{1}{8}$ " away from the seam on the body side. Repeat for other armhole.



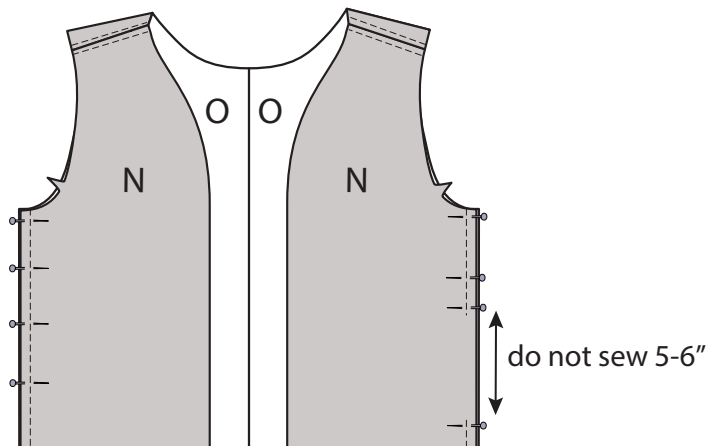
31. Place both pieces of the back lining on top of each other with right sides together. Sew along their center edge at $\frac{1}{2}$ " away. Sew $1\frac{1}{2}$ " along the center of the neckline. Press along the centre back (straight line from top to bottom) so that a pleat forms at the top portion of the back lining. Place the pleat to the left and sew through all layers for $1\frac{1}{5}$ " securing the pleat to the left side of the center back neckline.



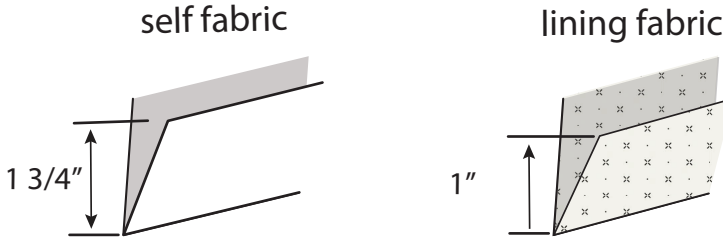
32. With right sides together, sew Front Lining (N) to Back Lining (O) at shoulders, $\frac{1}{2}$ ". Press open. Topstitch $\frac{1}{4}$ " each side of seam.



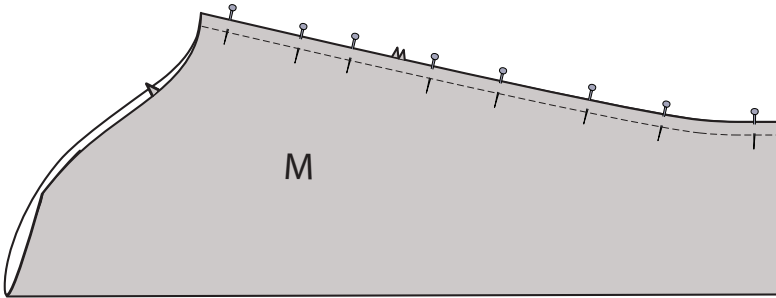
33. With right sides together, sew Front Lining (N) to Back Lining (O) at side seams, $\frac{1}{2}$ ". Leave a 5-6" gap in one side seam for turning the garment inside-out in the final step.



34. Press the bottom edge of the self fabric and lining up towards the wrong side of the fabric. Do this for the sleeve and the main body fabrics.

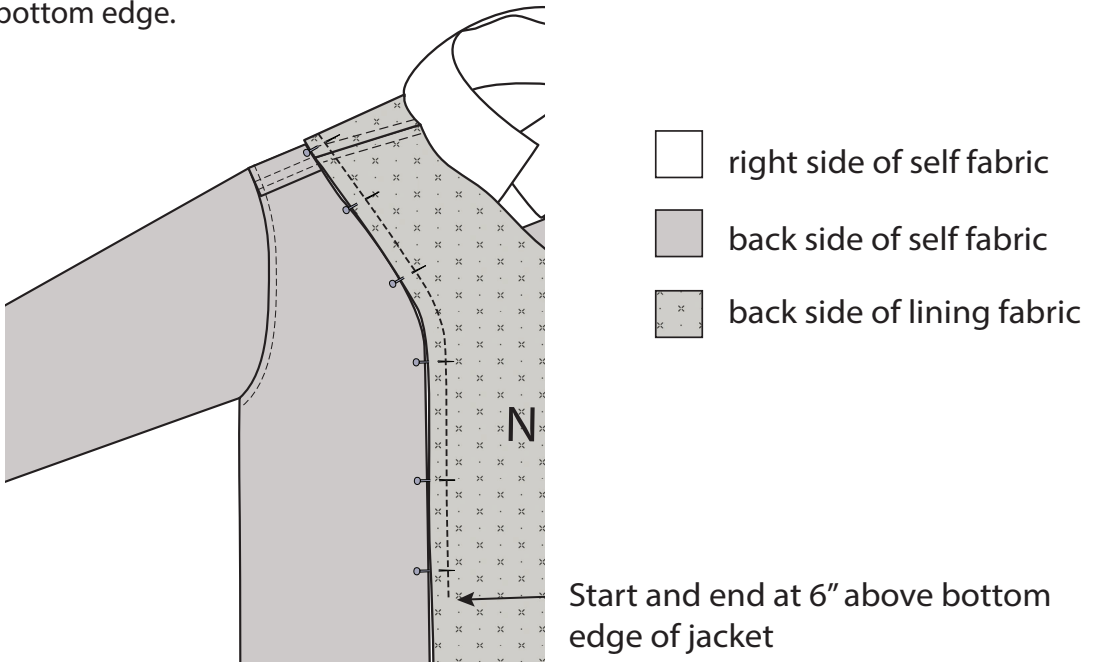


35. With right sides together, sew long edge of Sleeve Lining (M) into tube, at 1/2" away from edge. Press open. Repeat for other sleeve lining.



36. Follow steps 29 and 30 to attach the sleeves (M) to the front (N) and back body (O). Note that the notch indicates the front of the sleeve/armhole, and the under sleeve seam matches the body's side seam.

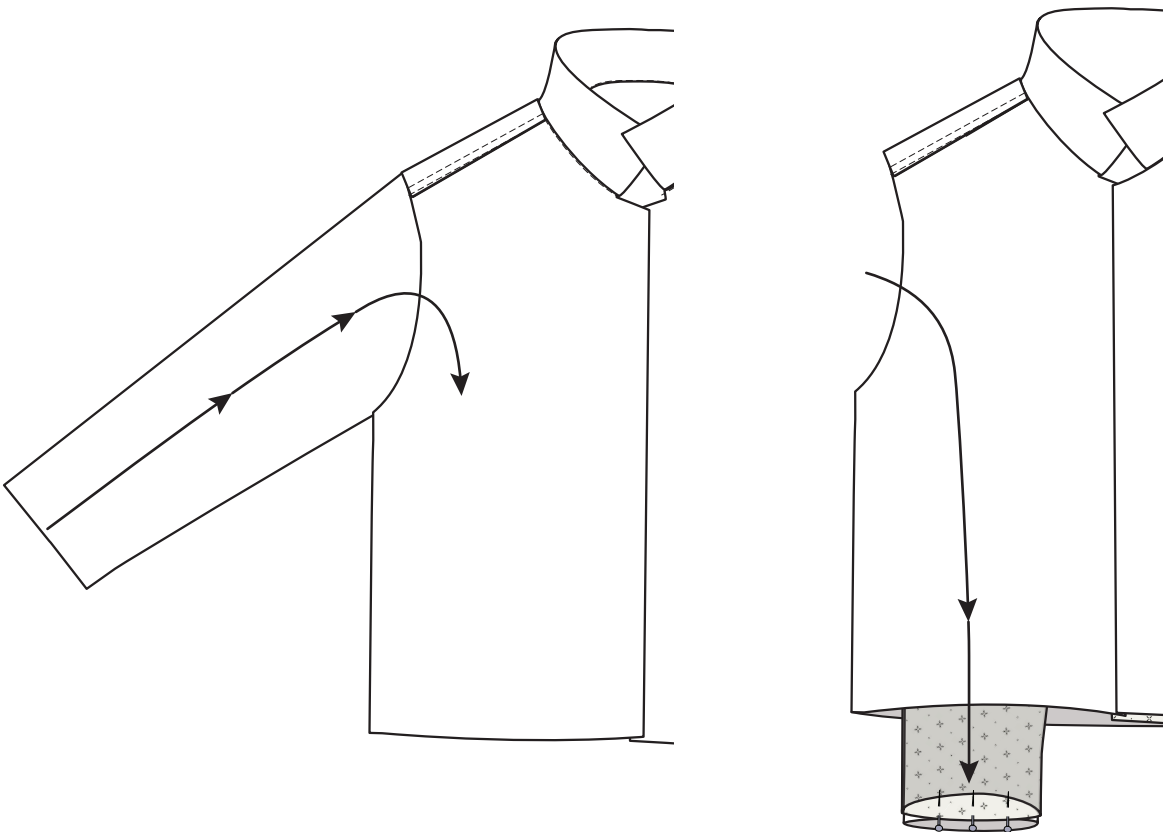
36. With right sides together, pin lining to Facings (E, L) along curved edges. Match shoulder seams. Sew from 6" above the bottom edge up around the neckline facing, and back to 6" above the bottom edge.



37. Press the bottom 1 1/4" of the sleeve up towards the wrong side of the fabric. Press the bottom 1/2" of the lining up towards the wrong side of the fabric.

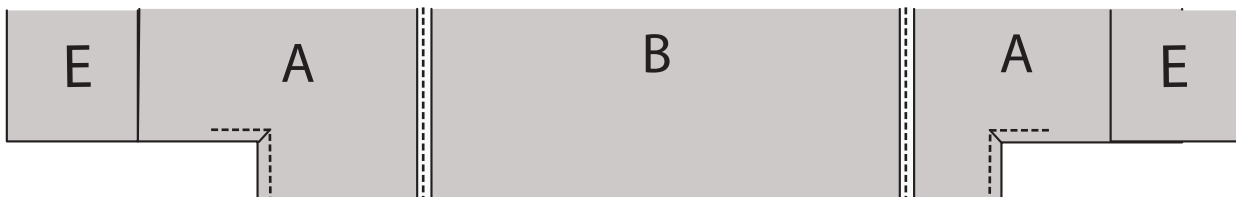
38. With the jacket right side out, put the lining and jacket sleeves inside each other as they would be when worn. Align the sleeve hems ensuring the sleeves are not twisted. Pull the sleeve openings between the two layers of the jacket all the way. Place the bottom edges of the sleeves together matching the under sleeve seams and pin them together. Sew at 1/2" away from the edge. Repeat for both sleeves.

I recommend watching a video of this (on a different coat, but same steps) go to: <https://youtu.be/uWZgwCZbeAY?t=1531>

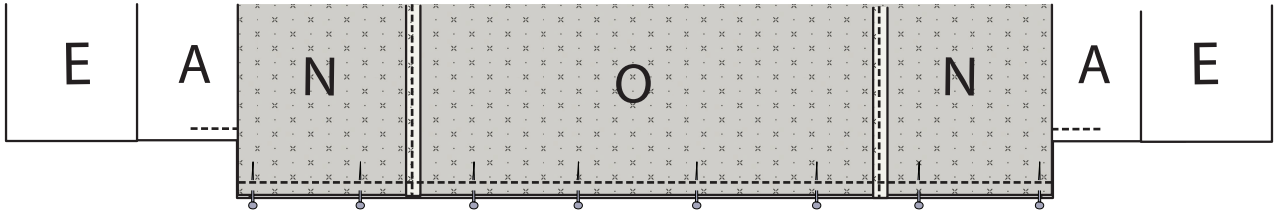


39. Pull the sleeves back so they are right side out, pin at 1" above the folded edge and sew at 1" above the folded edge making sure to only sew through the main fabric, not the lining.

40. Lay the bottom edge of the jacket flat on the table and mark a line 3/8" from the notch corner and sew a line of stitching to reinforce the corner. Clip into the corner at a 45' angle.

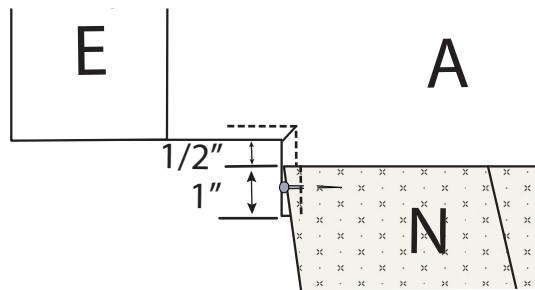


41. With right sides together, pin the lining to the coat along the bottom edge. Sew at $\frac{1}{2}$ " away from edge.



42. With right sides facing up, fold the lining down by 1" (should already be a pressed edge here) and top stitch at $\frac{3}{8}$ " away from the vertical edge at the bottom corners. See arrows below.

You can watch the video for reference: <https://youtu.be/uWZgwCZbeAY?t=1727>

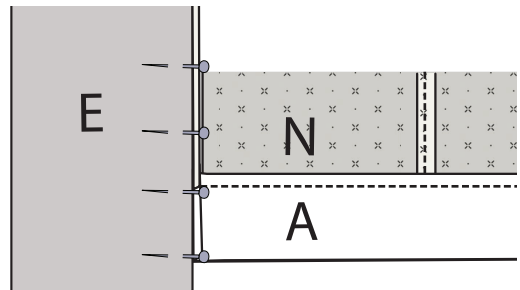
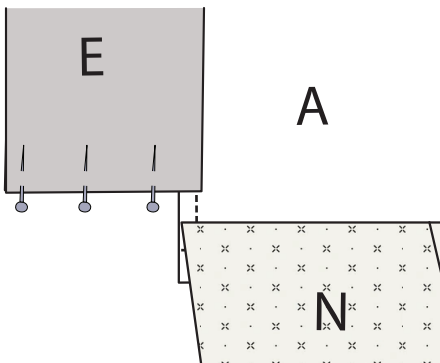


43. Step 1: Fold the facing (E) towards the body (A) with right sides together. Pin along their bottom edges. Step 2: Fold the lining up by $1\frac{3}{4}$ " so right sides of lining and main body are together. Pin facing E to hem of main body (A) and lining front (N).

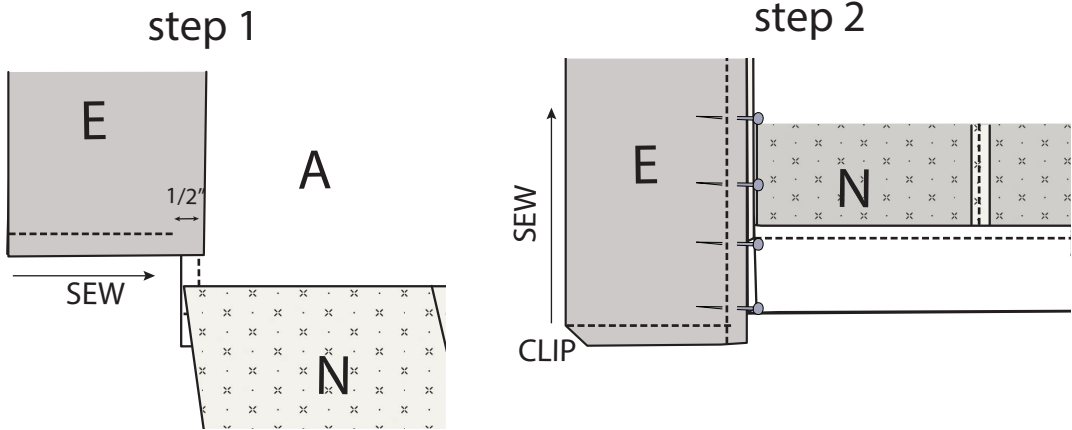
I recommend to watch this video first: <https://youtu.be/uWZgwCZbeAY?t=1727>

step 1

step 2



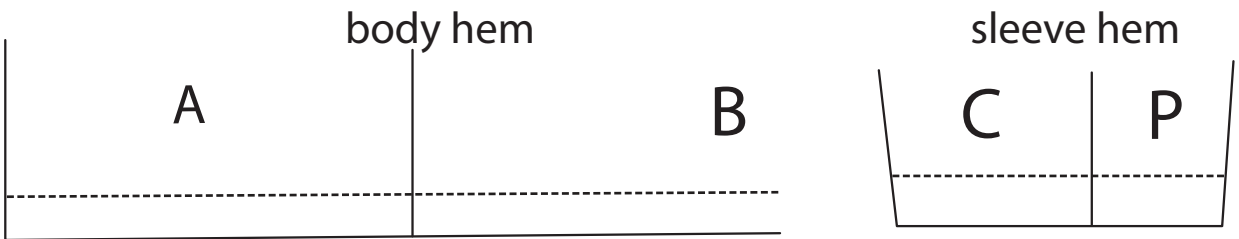
44. Step 1: Sew from the outer folded edge of facing (E) to 1/2" from the inner edge of facing (E).
 Step 2: Lift your presser foot, pivot so that you are ready to sew along the long vertical edge of the facing, lifting all the seam allowances out of the way. Sew up to 6" above the bottom edge where the facing is already sewn to the lining. Clip the corner of the facing edge. Repeat on the other side. Watch the video listed in step 43 for reference.



44. Turn the whole garment right side out through the hold that was left in the side seam of the lining. Close the hole in the side seam of the lining by hand stitching the pressed edges together.

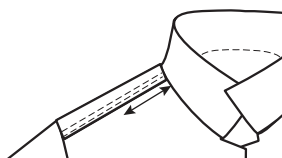
45. Make sure the bottom corners are square and crisp, and then press bottom corner with a tailors' clapper if you have one. Top stitch at 1/4" from the edge from the bottom corner, up around the centre front edge, along the neckline to the collar, around the collar and back down along the neckline and centre front edge to the bottom corner.

45. Moving the lining fold away from the bottom edge of the jacket, stitch the hem at 1" above the bottom edge (A) and (B). Repeat the same step for the sleeve edges (C) and (P).



46. Press the bottom edge with a tailors' clapper if you have one. Press firmly, but do not over-press.

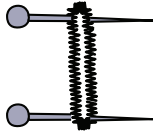
47. Pin through the main body shoulder seam and facing shoulder seam aligning seams. Starting at the neckline on the main body side, stitch-in-the-ditch in the shoulder seam for 2".



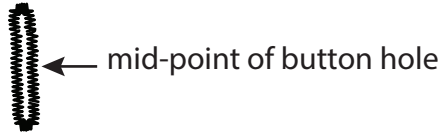
48.

48. On the right front, use your paper pattern piece for the Front (A) and mark the button and button hole with a washable marker. Use a button-hole foot and do a practice button hole to make sure it is the right size for your button. Once you are ready, sew all buttonholes.

48. Place a pin at each end of the button hole and cut between the pins. This ensures you do not cut through the sewn part of the button hole.



50. Align the front hems and overlap the front by 1 1/4" and mark your buttons at the mid-point of the button hole. Sew the buttons through the front body (A) and front facing (E).



ALL DONE!